



THE PACRA PACER

San Marcos, CA

Volume 10 - Number 1

November 2002

STARTING UP AGAIN

Now that the elections are over, we can get back to the ordinary affairs of life, of education, and of retirement. Most of the problems of education in California are those that relate to the amount of money available through State and local funding. Also what's new? If you think that most of the college's problems are small ones, consider this: it is predicted that by the year 2015 Palomar College will have to face a projected student growth of 14,000 to 17,000 students, that's new ones on top of the present 30,000 students.

The Governing Board of Palomar Community College District will be composed of Mr. Darrell L. McMullen, M.B.A.; Mr. Ralph G. Jensen, B.S.; incumbent Dr. Michele T. Nelson, re-elected for a four-year term, Mr. Mark Evilsizer, newly elected for a full term, and Mrs. Nancy Chadwick, newly elected for the short term of one year. Mrs. Chadwick has had 23 years of experience at the University of California campuses, engaged in academic planning, budget, and management. She currently serves on the Palomar College Foundation Board of Directors. She holds a Master of Social work degree and a Master's in Public Administration. She has been closely connected with the important events at Palomar during the past four years, and in the college-wide planning process that will culminate in a 3-year Strategic Plan. She will succeed Mr. Silverio Haro, an appointed incumbent Board member.

Dr. Nelson has had 30 years of experience serving San Diego County community college students as a faculty member, academic administrator, and as a Palomar College trustee. She and her husband have lived in Poway since 1969.

Mr. Evilsizer has had over 25 years of experience in budget and project management with various organizations. He has been an adjunct faculty member of Palomar College in the Business and Vocational Technology Departments of Palomar College. He holds a bachelor's degree in business administration from Redlands University and a Master of Arts degree from Claremont Graduate University. He will succeed Dr. Robert L. Dougherty, Jr., a veteran of 19 years on the Board.

CAMPUS RADIO STATION KKSM 1320 AM

Mr. Zeb Navarro, a 21-year old Palomar student opens the day at Palomar with his morning music program, with lots of comments, followed with his choices of Oldies and Oddities. Already with two years of radio experience, he has mastered an automated programming system and learned how to structure a newscast. All this is preparation for a long career in radio news. KKSM has turned out several alumni who have been successful in broadcasting. These include KPBS radio reporter Kenny Goldberg; Shanon Leder at Rock 105.3; Bryan Schock, program director at 91X; Greg Simms and Anita Rush of Star 100.7; and Nick Upton of KSON.

Station KKSM operates on a 500-watt signal that can be heard throughout North County, and is also carried on Cox Cable FM 92.3. Recent upgrading of its equipment allows the station to broadcast 24 hours a day.

ENROLLMENT GROWTH AND FUNDING

On September 9, the College had 29,366 attending classes, an increase of 5.5% over the previous fall. But the California State legislature has not funded this large a number. Under the present State budget, only about 70% of the enrollment will be funded. During the record setting summer session of 2002, there was a 10% average increase in attendance.

Students find it difficult to schedule some classes such as English and math classes in the morning. Difficulties are common on campus in finding parking places, and securing places in lines for the cafeteria and bookstore.

COLLEGE PLAN FOR THREE YEARS

The Palomar College Strategic Task Force has completed a three-year plan to implement the vision, "learning for success." Now comes the most important step, that of implementing the plan. The Task Force, headed by President, Dr. Sherrill Amador and numbering over 70 members, has been working since September 2001. The plan can be viewed at www.palomar.edu/plan. To implement the goal of student success, the plan will focus on increasing scholarship recipients and donors, increasing options of child care programs and implementing programs and services to increase persistence, completion and transfer.

Implementing the goal of teaching and learning excellence will be done through the development and implementation of programs that

promote institutional and student expectations, responsibilities, and success. To promote professional development the task force plans to implement a more timely process for approval and filling of new and replacement positions.

Another goal is facilities improvement under which various buildings on campus will be remodeled and renovated.

For the goal of improving resource management, the task fore hopes to create a budget plan that will include upgrades and replacement of computer hardware and software.

NEW SCIENCE CENTER ON THE WAY

For the first time in several years, a new classroom building will soon be built on the San Marcos campus. Funds for its construction and equipment (\$29.4 Million) were included in Assembly Bill 10, signed by the Governor on April 26, 2002. This new science and technology building will contain 12 laboratories and 10 lecture classrooms, totaling 107,000 square feet. Four of the labs will be for earth science, two for physics and engineering, nine for life science, and five for chemistry. These features, with facilities for computer science, were included in a master plan for a building in another location prepared in 1978, but funds were never available through local bond elections or through the state.

The design was created by Kelly Hudson MacIsaac, manager of facilities planning; Mrs. Diana Lutz, vice-president for instruction; Dr. Michael Rourke, dean of mathematics and the natural and health sciences; Mrs. Marlene Imirzian, district architect; Mr. Mike Ellis, director of facilities; and faculty members from the departments of life science, chemistry, earth sciences, and physical and engineering. Other departments will be able to use

the high tech lecture rooms when not in use for science classes. It will be constructed north of the Phil H. Putnam Memorial Library, with a curved shape following Comet Circle, in two large sections of three stories each. The building will be constructed of reinforced brick, as have practically all of the buildings on the San Marcos campus. The Governing Board of the early 1950's asked the architect, Mr. C. J. Paderewski, to plan for brick construction after he showed that in the long run, cost analysis actually favored brick. A well-constructed building of reinforced brick will last indefinitely if maintenance is kept up-to-date.

PACRA LOSES ANOTHER MEMBER

On November 3, 2002, Mr. Allison Gronberg passed away at his home. He was born on November 2, 1917, and started teaching at Palomar College on September 5, 1972, retiring on June 16, 1984. For all these years, he was associate professor in the Foreign Languages department, teaching Spanish.

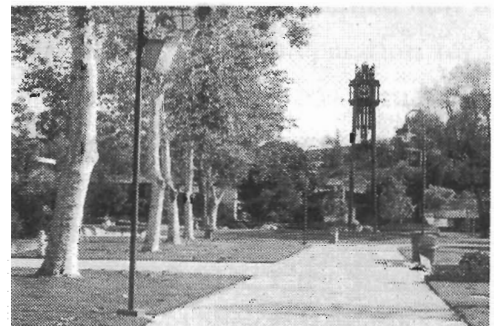
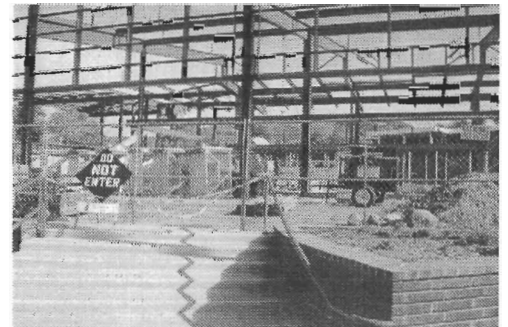
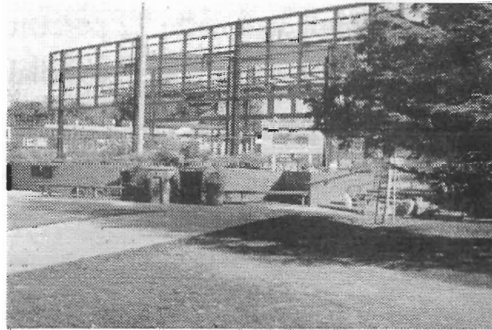
Another loss to the College community was the death of Paul (Paulino) Mena, Jr., on April 16, 2002, at the age of 74. Paul was a hard-working member of the Grounds Division for over 28 years, and in his latter years served as Head of the Grounds Division.

YOUR CONTACT WITH HUMAN RESOURCES

If you have questions about your retirement or insurances, you should first contact Eileen Dundoc, Benefits Specialist, in Human Resource Services, Administration Building, Room A-1, at telephone (760) 744-1150 ext. 2889. She recently replaced Victoria de la Torre, who now works in the District Office of the San Diego Community College District.

REVISITING THE NEW STUDENT CENTER

Construction of the Student Center is moving at a rapid pace now. The first bids came in for greater amounts than available funds, so several changes were initiated. None of these changes will impair the students' use of the building. Such changes included the roof overhang, replacing glass walls with metal ones, and exchanging stainless steel partitions in the restrooms with plastic ones.



SNAPSHOT OF STUDENT BODY

A study of the student body for the Spring Semester 2002 revealed that the average age is 31, that 47 percent are male, with 53 percent female; for ethnicity 61 percent are white, 25 percent Hispanic, 8 percent Asian, 3.6 percent are black, 1.6 percent are American Indian; 62 percent are freshmen, 24 percent are full-time students; 88 percent take credit classes; 27 percent take night classes; 85 percent need remedial math; 72 percent need remedial English; and 26 percent need remedial reading. (Source: *The Telescope*, April 15, 2002)

THE CAMPUS AT ITS BEST

Thanks to Mr. Mike Ellis and Mr. Rick Kratkowski and all the men and women in their departments, the campus looks better than it has ever looked in the past. {Opinion of the editor!} It would do your hearts good just to drive and walk through the grounds, probably most conveniently on a weekend. Auf Wiedersehen!

THE PACRA PACER
Volume 10 — Number 1
November 2002

Palomar College Retirees' Association -- PACRA
1140 West Mission Road
San Marcos, CA 92069-1487