



The PACRA Pacer

Where Are They Now?

NONA McCLURE, San Marcos, CA



Nona McClure held many positions during her tenure at Palomar College. She was hired in 1975 as a Key Punch Operator in the Data Processing Center. In 1982 she was promoted to the position of Supervisor. In 1984 Nona assumed the position of Personnel Technician in Personnel Services that is now known

as Human Resource Services. She was then selected to become the Coordinator for the educational outreach program being offered by Palomar College at Mt. Carmel High School. Nona was ultimately assigned the position of Education Center Manager for Palomar's Mt. Carmel and Poway High School extended education programs. She retired from Palomar College on January 6, 2000.

Since her retirement Nona has traveled extensively to major cities in the United States and she particularly enjoyed her visits to Branson, Missouri and major cities in Alaska as well as her time spent in Mazatlan, Mexico.

A major influence since her retirement was her attendance at the Elderhood Conference at Asilomar. This conference focused on allowing seniors to design the best scenario for the future, and as a result Nona started a weekly coffee group that meets every Tuesday (based on the *Cheers* Television show) – 'everyone knows your name.' Her personal goals in retirement are being creative, living life to its fullest, learning, loving, sharing and connecting. "The more I create the happier I am." She also notes "I care for all the talented people from Palomar College that I've had the pleasure of hearing from and seeing since my retirement." ♦

New Board Member added:

TOM HUMPHREY



Tom began teaching in the Business Education Department September 1966 after teaching for 3 years in the business department at

Los Altos High School in the La Puente High School District. He was glad to be back in the area where he was born and raised. He, his mother, two sisters, and brother all graduated from Escondido High School.

After a less than stellar semester at UCR, he came to Palomar as a student to salvage his academic career—three cheers for Palomar. He got his AA in 1958, BS in Banking and Finance from San Diego State in 1960, his general secondary teaching credential in 1961 and his MS in Business Education in 1964.

His first semester at Palomar included seven classes with 5 different preps. He became Department Chair in 1969, a job he held for 7 years. The Computer Science Department got its start in the

Humphrey continued next page

PACRA Mission

*We are retired Palomar College
public employees working together
to maintain and improve
the quality of the lives
of our members by protecting
and monitoring our retirement benefits
and health and welfare issues.*



PACRA Request for your E-mail Address...

➔ If you haven't already done so, PACRA would very much appreciate having your e-mail address on file. If you prefer we not publish it in our Membership Directory please just let us know. We will honor your request for privacy. There are occasions when your Board feels it is in your/our best interest to alert you to events and/or activities that may affect your benefits, and due to the ever-increasing cost of postage it is far more cost-effective for us to do so through e-mail rather than US mail. Thank you for your support.

PACRA Pacer,

March 2014 Edition, Vol. 7

June Rady, Ted Kilman

Communications Committee

Karin Norlin

Layout & Design

junerady@cox.net

tkilman@cox.net

Humphrey continued from previous page

Business Education Department. When it split off into its own department, he continued to teach in both departments. He served on the Faculty Senate under three different presidents holding such offices as chair of committee on committees, Senate secretary, among others.

Tom continues to teach part-time, teaching one or two classes a semester depending upon the needs of the Business Department.

Currently he serves on the Boards of the Escondido History Center, Local Division of California Retired Teachers Association, a foundation associated with the United Methodist Church of Vista, and the Class of 1956 of Escondido High School.

He also continues to maintain his avocado grove hoping we will get some rain one of these days so maybe the price of fruit will exceed the cost of water.

Tom lives in Vista with his wife Sue in a home they built in 1973. They just celebrated their 50th wedding anniversary with a small gathering and then a trip to Hawaii. They have two children, Michelle and husband Mike—children Jon and Nicole, all of Vista; and Jim and wife Kimberly—children Roarke and Sela, all of Atlanta, Georgia. ♦

Save the Date: Mark your calendars and plan to attend PACRA's Annual Meeting to be held on **Thursday, May 15, 2014**, 11:30 a.m. - 2:30 p.m. at The Old Spaghetti Factory, 111 North Twin Oaks Valley Road, San Marcos. Lunch will be served at noon.

Palomar College President **Robert Deegan** will be our honored guest, and he will give us an update on campus affairs. The rest of the meeting will be devoted to you... our members... so we can renew acquaintances, take photos and just plain relax and enjoy the company of long-time colleagues.

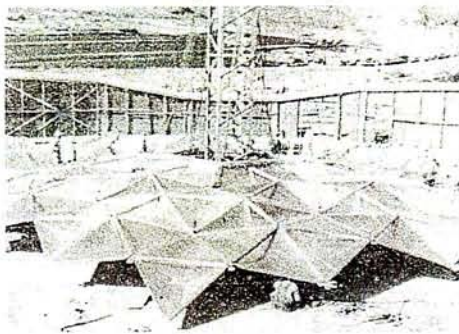
Please plan to join us!



Looking Back

Historical Tidbits — The Palomar College Dome

For most of us who began working at Palomar College after 1960, first impressions of the San Marcos campus included the distinctive aluminum geodesic dome at the far end of the main parking lot. Striking in sunshine or rainy weather, it has been a symbol of Palomar College for over a half century. The Dome upon its completion in 1959 and visible from most of the San Marcos campus, Mission Avenue, Highway 78 and from the air became the symbol of the College. The 1959-60 College Catalog also



featured a detailed rendering of the new facility on its cover.

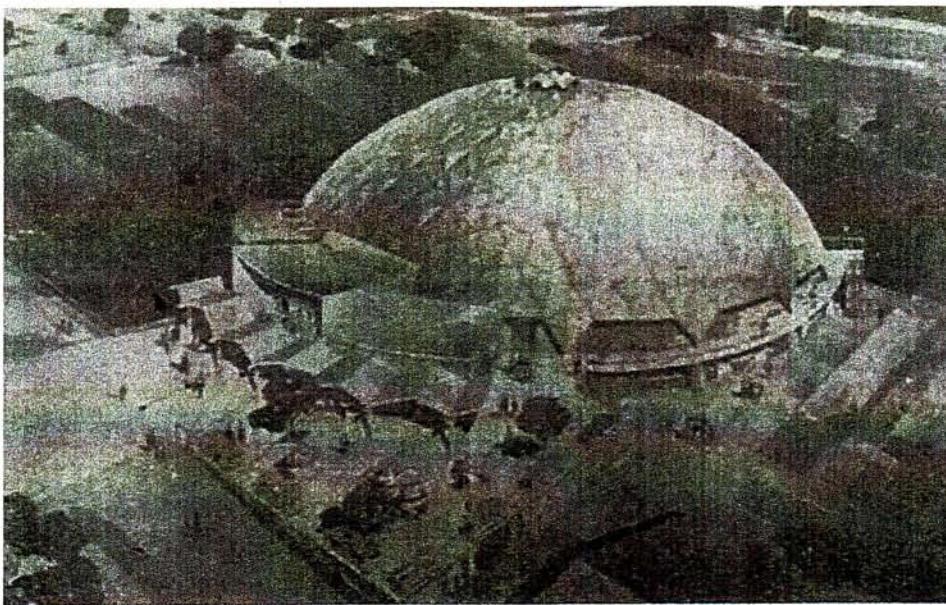
Known originally as the Physical Education Building, the Dome and a companion cafeteria/student union building were planned for the growing campus in the 1950s with construction contingent on a \$685,000 bond issue. In October of 1957, District voters passed the proposition by an overwhelming margin with 3,715 votes cast in favor of the bond issue and 1,257 against. By contrast, the College's operating budget in 1957-58 was \$469,865.

The Dome was based on a design patented by visionary architect Buckminster Fuller in 1954. Noted San Diego architect C. J. Paderewski was hired by the District to design a 16,250 square foot facility. He proposed constructing Fuller's dome design, which he said would be

15 percent cheaper to construct than a traditional gymnasium and classroom building. At that time there were only five such structures in the United States with none built for educational use. Whether it was an innovative or cost-savings decision, the sound-minded Governing Board surprised College President John Dunn and Vice President John Schettler when it voted to move forward with Mr. Paderewski's avant-garde proposal.

Following completion of the footings, concrete floor and brick walls, North County residents and Palomar College staff were treated to the sight of a giant crane towering over the unfinished building. The 545 aluminum alloy panels, each 0.081 inches thick and designed and fabricated by Kaiser Aluminum, were assembled circle by circle with the completed panels hoisted up to allow for installation of the next row. Construction was completed in five days, after which the Dome was lowered onto the brick pylons to be attached and finished.

In August of 1959 local fire-fighters tested the Dome to determine if it was indeed leak-proof by spraying it with multiple fire hoses. The Vista Press reported no leaks were detected. However, once the Dome was in regular use, the movement of the sun heated the Dome in a



Dome continued next page

◦ *In Memoriam* ◦

Remembering our members we one time worked with,
but have passed...



Marjorie Norwood
Admissions and Records
Passed – September 22, 2012

John George
Admissions and Records
Passed – October 6, 2012

Tom Dolan
Data Processing
Passed – October 16, 2012

Nicholas Dispartì
Industrial Technology
Passed – December 26, 2012

Warren Hawley
Social Sciences
Passed – February 5, 2013

Tilly Gonzalez Alvarez
Business Services
Passed – March 8, 2013

Jean Houston
Human Resource Services
Passed – June 2, 2013

Floyd Collins
Graphic Arts
Passed – June 6, 2013

Brenda Montiel
Performing Arts/Music
Passed – July 11, 2013

Robert Smith
Director of Personnel Services
Passed – August 18, 2013

Joe Hydock
Earth Sciences
Passed – September 2, 2013

Jim Bowen
Counseling/Student Activities
Passed – December 15, 2013

Henry "Hank" Perry
Art Department
Passed – January 8, 2014

Muriel Mendizza
Arts & Languages
Passed – January 24, 2014



Dome continued from previous page

way that made the panels swell on one side and contract on the other, causing leaks and ultimately necessitating a resealing. In addition, the acoustics could generously be described as terrible, an unanticipated problem in a structure filled with noisy athletic contests and cheering crowds.

Various solutions to this problem have been implemented over the years and acoustical issues have been given high priority as planning for the Dome's transition from a physical education facility to a state-of-art Athletics/Kinesiology complex is being finalized.

Research done by *Judy Cater* ♦

NEWS BRIEFS

1 Retired Teachers Fight for Social Security Fairness and Solvency

Whether you contributed to Social Security during your 'summer' job or expect to receive benefits from your spouse's contributions, you need to be aware of two penalties that unfairly target teachers. If you paid into Social Security... the Windfall Elimination Provision (WEP) will take your CalSTRS pension into consideration and use a special formula to determine your Social Security benefit... which means your benefit will be reduced! If your spouse paid into Social Security... the Government Pension Offset (GPO) will take your CalSTRS pension into consideration and use a special formula to determine your Social Security spousal benefit... again, your benefit will be reduced! Information sheets on both the GPO and WEP are available on-line from the Social Security Administration [HYPERLINK](http://www.socialsecurity.gov)

"<http://www.socialsecurity.gov>"
www.socialsecurity.gov. The California Retired Teachers Association (CalRTA) continues to fight these unfair penalties. Other pensions don't result in reduced Social Security benefits.

2 JPMORGAN Will Pay \$13B for Mortgage Practices

JPMorgan Chase & Company has agreed to pay \$13 billion in a landmark settlement and acknowledged it misled investors about the quality of risky mortgage-backed securities ahead of the

2008 financial crisis.

The settlement, announced on November 19, 2013, with the Department of Justice is the largest between the U.S. Government and a corporation. It also included settlements with California, New York and other states.

JPMorgan will pay \$299 million to California's public employee and teacher pension funds as part of the settlement, State Attorney General Kamala Harris announced.

The money will settle claims that the company misrepresented the value of residential mortgage-backed securities sold to the California Public Employees Retirement System and California State Teachers' Retirement System between 2004 and 2008.

"JPMorgan Chase profited by giving California's pension funds incomplete information about mortgage investments," Harris said in a statement. "This settlement returns the money to California's pension funds that JPMorgan wrongfully took from them."

The deal was reached after months of negotiations and could serve as a template for similar settlements with other big banks. As part of the deal, JPMorgan agreed to provide \$4 billion in relief to homeowners affected by the bad loans. The bank also acknowledged that it misrepresented the quality of its securities to investors.



LEGISLATIVE WATCHDOG



Update on Privacy Issue – RPEA Leadership Active in Combating Public Pension Database Launch

The Sacramento Bee, on February 5, 2014, released an article announcing the launch of a public pension database by a government reform group associated with Marcia Fritz, one of the primary opponents of reasonable public pensions.

While the state's largest pension fund, CalPERS, abandoned a similar project, the Tustin-based

California Public Policy Center has activated its own database. It will continuously update TransparentCalifornia.com whenever it receives new data.

RPEA is speaking out on this issue. In the article, Harvey Robinson, President of the 28,000-member Retired Public Employees' Association of California, said that pensioners will be "outraged" as word about the database spreads. "We certainly

Legislative Watchdog continued next page

Legislative Watchdog continued from previous page

are concerned about that information creating vulnerability for retirees," he said.

RPEA has always believed that releasing this public pension database is mean-spirited and unnecessarily exposes retirees to scams and the crimes promoted when personal IDs become public domain. RPEA leadership is submitting letters to address this topic. We will keep members posted as this issue progresses.

Voters Could Face Full Ballot in November

The November election already is shaping up to have a potentially lengthy ballot loaded with divisive questions. There are nearly 30 initiatives targeted for the ballot if supporters can gather the required number of signatures in time. Paid gatherers earning \$2 to \$5 or more per signature are already hawking some initiative proposals. But a number of controversial ones are waiting for clearance from the State Attorney General's Office before supporters can set up store-front

tables with petitions. Those may be delayed until 2016, depending on decisions made by supporters as they study deadlines, costs and enthusiasm for the cause.

This year, four measures are already on the November ballot. They are: **Water bond (Legislative Statute):** An \$11 billion measure to pay for various supply and environmental programs. **Budget reserve (Legislative Statute):** Constitutional amendment that would require lawmakers to maintain a 'rainy day' reserve and limit how that savings can be spent. **Health insurance (Initiative Statute):** Requires approval of the elected state insurance commissioner before health insurance rates can change, but exempts large employer group health plans. **And Indian gaming: Referendum to Overturn Indian Gaming Compacts.**

Fore information on measures waiting in the wings to qualify for the ballot go to [HYPERLINK "http://www.ss.ca.gov"](http://www.ss.ca.gov) www.ss.ca.gov and click on the 'elections' link. ♦