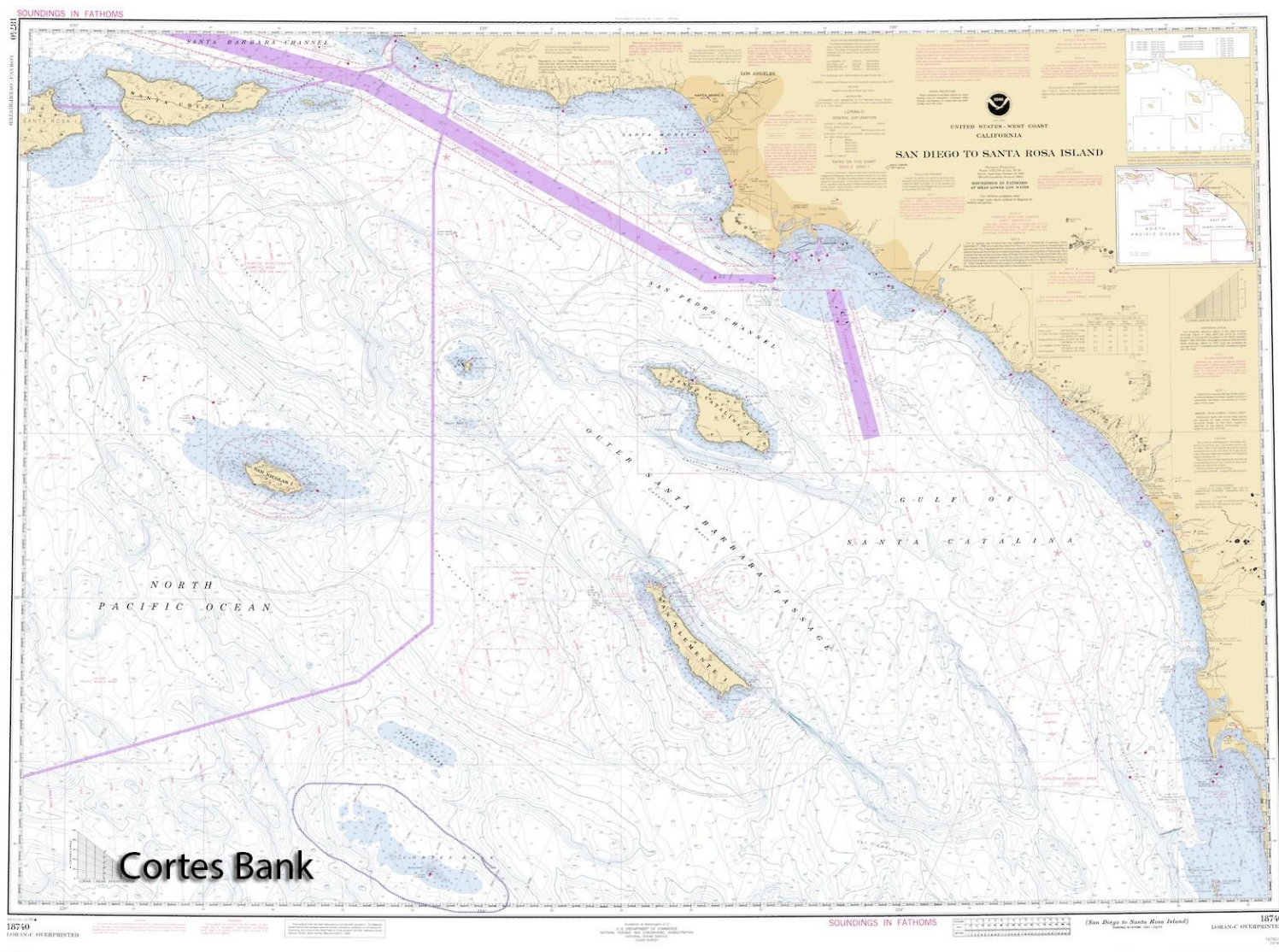
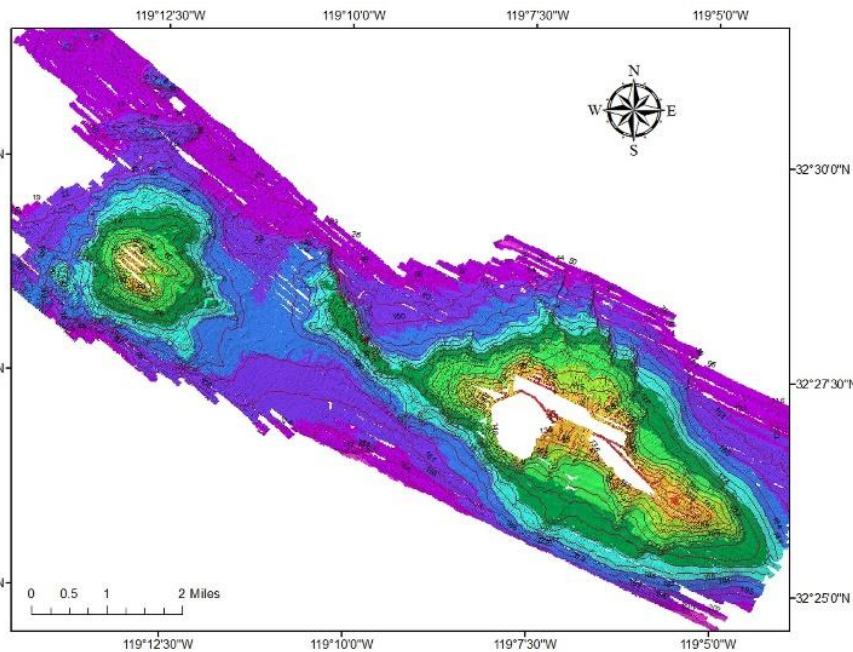
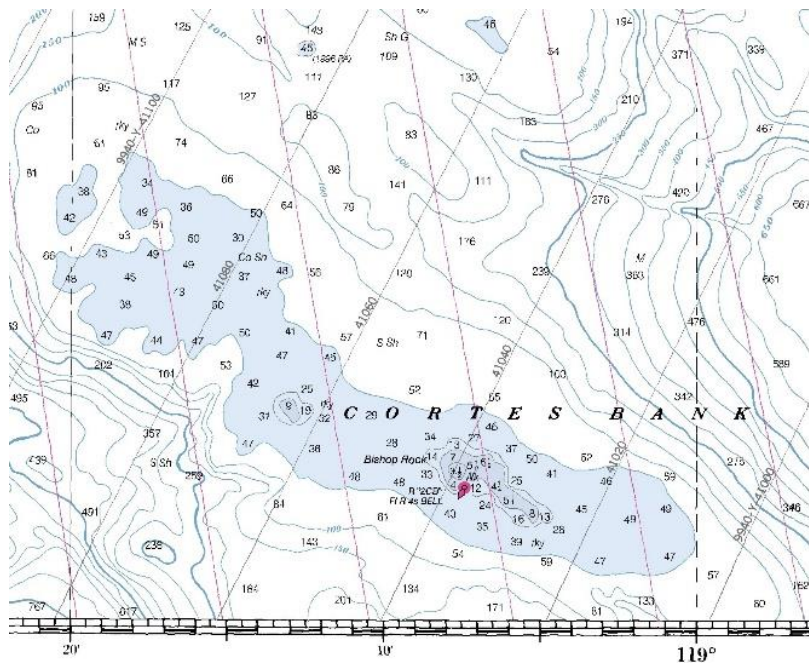


Online Resource for Cortes Bank (a.k.a. Cortez Bank)



NOAA Nautical chart showing the location of Cortes Bank off southern California



Close-up of the NOAA Nautical chart of Cortes Bank (left).

Pink tear-drop shaped mark is navigation hazard warning. Shallowest spot in that area is half a fathom (which is three feet!)

Color-coded image of the Cortes Bank illustrating topography (right).

Blue/purple is deep; orange/tan is shallow. White areas were too shallow to measure by shipboard techniques.

Image from Seafloor Mapping Lab, CSU Monterey Bay.

**Aerial view of waves approaching Cortes Bank.
Waves break over the shallowest region.**

