



# Accountability Reporting for the Community Colleges (ARCC)

Palomar College  
Presentation to Palomar College Board of Trustees  
March 13, 2007

# Overview

- What you have in your packet
- ARCC Background
- Reporting Framework
- Systemwide Measures
- College Measures



# What you have in your packet

- Full report is NOT in your packet (over 600 pages)
- Systemwide information
  - Intro to system measures
  - System measures
- College information
  - Palomar's self-assessment and response
  - Intro to the college measures
  - Palomar's measures and profile

# ARCC Background

- Accountability Reporting for the Community Colleges (ARCC) / AB1417 is the new framework that provides for the annual evaluation of community college performance in meeting statewide educational outcome priorities.

# ARCC Background

- Initiated by AB 1417
- Required the System Office to develop an accountability report/model
- Replaced Partnership for Excellence

# ARCC Background

## ■ Timeline

- January 22, 2007 - draft released to colleges
- February 23, 2007 - college self-assessment due
- March 19, 2007 - final report issued
- By March 2008 - local Board of Trustee interaction

# ARCC Framework

- Two levels:
  - Systemwide (7 measures)
  - College (6 measures)



# ARCC Framework

- Four categories:
  - Student Progress and Achievement: Degree/Certificate/Transfer
  - Student Progress and Achievement: Vocational/Occupational/Workforce Development
  - Pre-Collegiate Improvement – Basic Skills and ESL
  - Participation Rates





# ARCC

Systemwide Measures  
And Highlights



# Systemwide Measures

- Student Progress and Achievement:  
Degree/Certificate/Transfer
  - Annual percentage of BA/BS graduates at CSU/UC who attended a CCC
  - Annual volume of transfers
  - Transfer rate for 6-year cohort of First-Time Freshmen
  
- Student Progress and Achievement:  
Vocational/Occupational/Workforce Development
  - Annual volume of vocational degrees and certificates by program
  - Increase in total personal income as a result of receiving a degree or certificate



# Systemwide Measures

- Pre-Collegiate Improvement – 1 measure
  - Annual volume of basic skills improvement
- Access/Participation – 1 measure
  - Participation rate

# Systemwide Measures

## Annual Percentage of Graduates who Attended a Community College

### UC Graduates

	2003-2004	2004-2005	2005-2006
Total UC	38,579	40,862	41,640
Attended CCC	11,328	12,123	11,883
Percent	<b>29.4%</b>	<b>29.7%</b>	<b>28.5%</b>

# Systemwide Measures

## Annual Percentage of Graduates who Attended a Community College

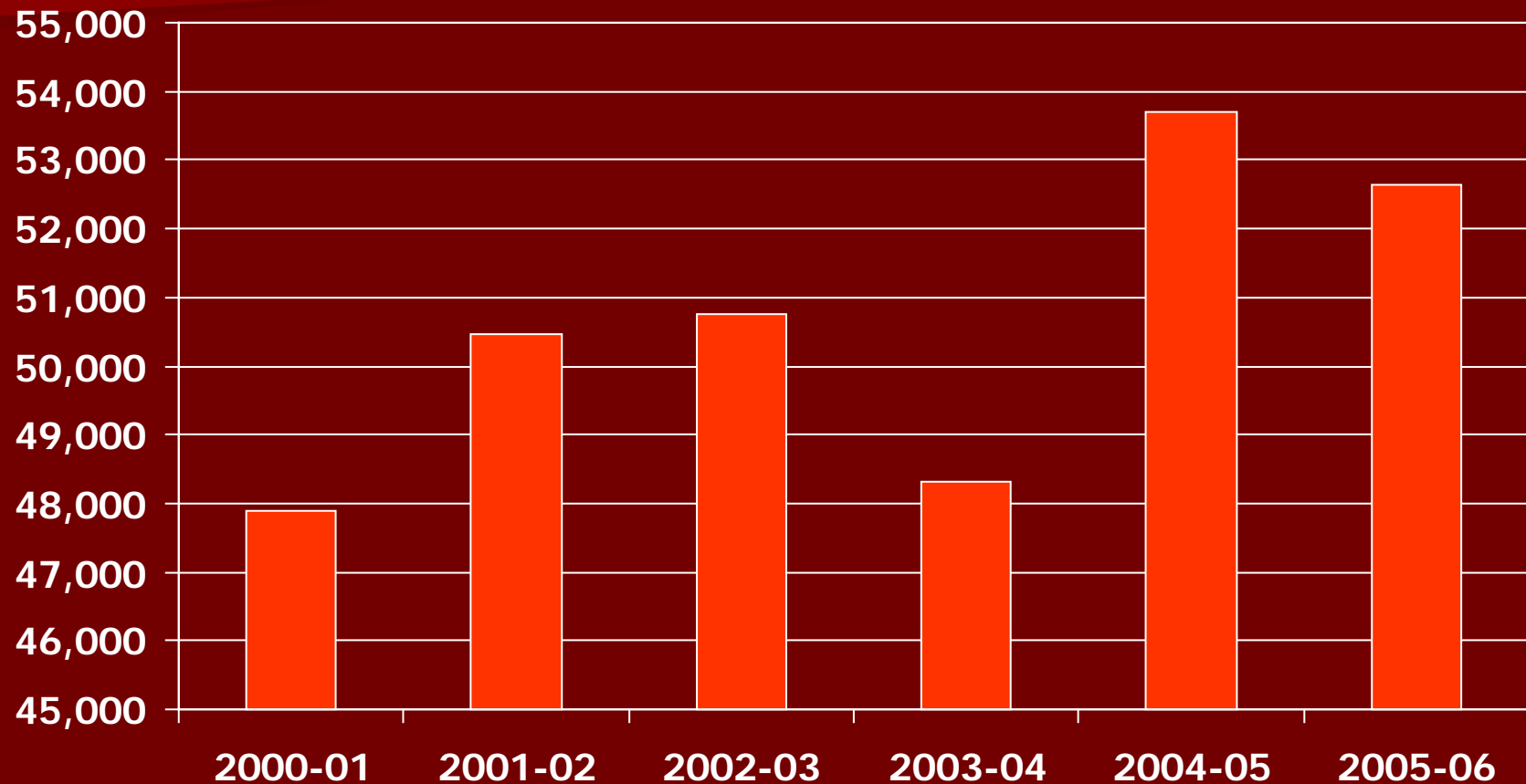
### CSU Graduates

	2003-2004	2004-2005	2005-2006
Total CSU Grads	65,741	66,768	69,350
Attended CCC	37,329	37,316	38,365
Percent	<b>56.8%</b>	<b>55.9%</b>	<b>55.3%</b>



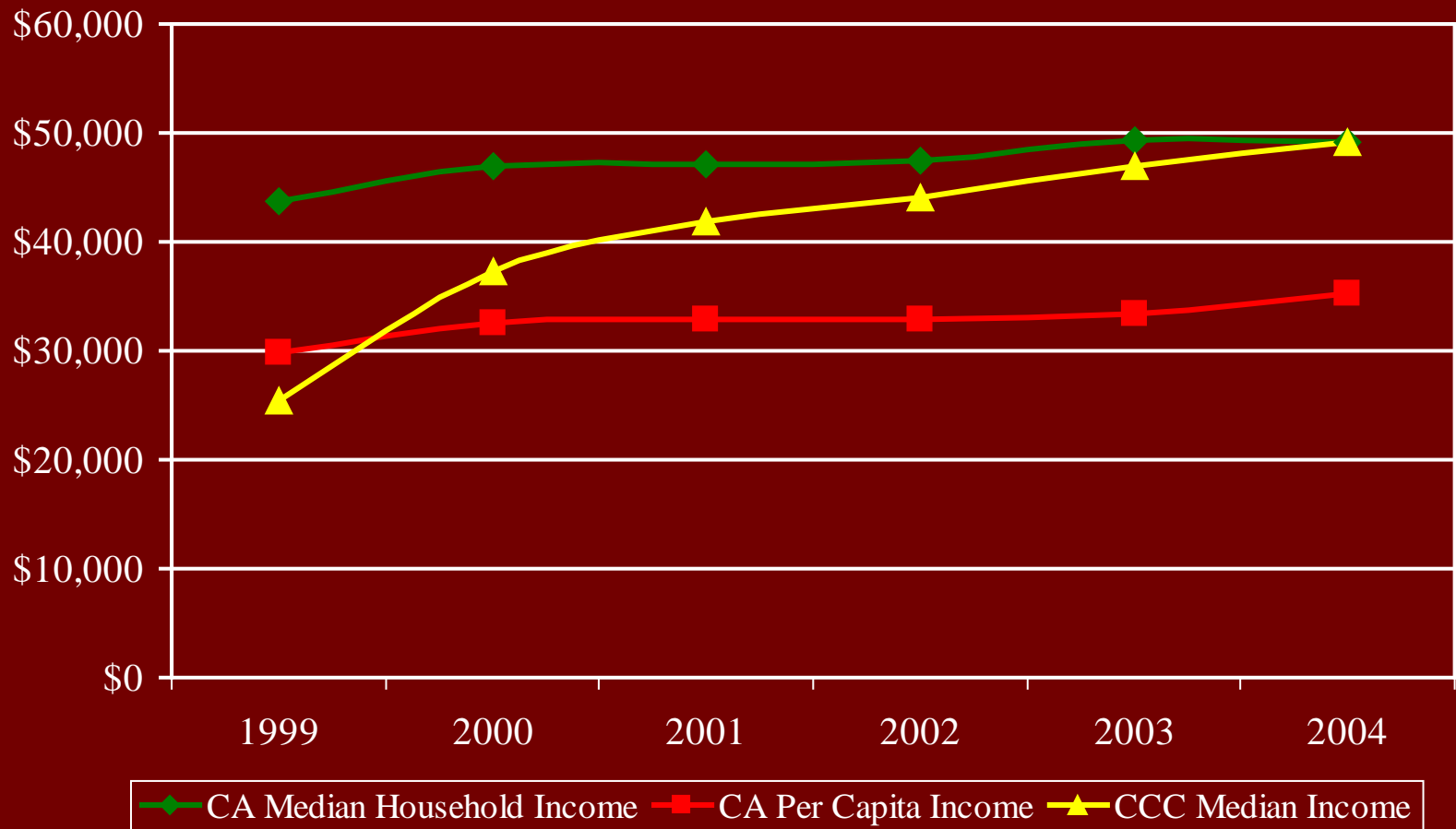
# Systemwide Measures

## Annual CCC Transfers to CSU





# Increase in Personal Income



# ARCC

College Measures  
Palomar College





# College Measures

- Progress and Achievement: Degree/Certificate/Transfer
  - Progress and Achievement Rate
  - Percentage of students earning 30 or more units
  - 1<sup>st</sup> Fall to 2<sup>nd</sup> Fall Persistence Rate
- Progress and Achievement: Workforce Development
  - Annual successful course completion rate for vocational courses
- Pre-Collegiate Improvement
  - Annual successful course completion rate for basic skills courses
  - Basic Skills Improvement Rate
  - ESL Improvement Rate



# Palomar College Student Progress and Achievement: Degree/Certificate/Transfer

	<b>1998-99 to 2003-04</b>	<b>1999-00 to 2004-05</b>	<b>2000-01 to 2005-06</b>
Student Progress and Achievement Rate	51.7%	51.7%	51.5%
Percentage of Students Who Earned at Least 30 units	66.8%	68.6%	70.4%



# Palomar College Student Progress and Achievement: Degree/Certificate/Transfer

	<b>Fall 2002 to Fall 2003</b>	<b>Fall 2003 to Fall 2004</b>	<b>Fall 2004 to Fall 2005</b>
Student Persistence	68.0%	68.5%	67.7%



# Palomar College

## Student Progress and Achievement: Vocational/Occupational/Workforce Development

- Annual successful course completion rate for credit vocational courses

	2003-04	2004-05	2005-06
Annual Successful Course Completion Rate for Vocational Courses	73.9%	81.8%	81.5%

# Palomar College

## Pre-Collegiate Improvement: Basic Skills and ESL

	2003-04	2004-05	2005-06
Annual Successful Course Completion Rate for Basic Skills Courses	55.9%	58.8%	61.7%

# Palomar College

## Pre-Collegiate Improvement: Basic Skills and ESL

	<b>2001-02 to 2003-04</b>	<b>2002-03 to 2004-05</b>	<b>2003-04 to 2005-06</b>
Basic Skills Improvement Rate	54.5%	52.4%	52.5%



# Palomar College College Profile

- In addition to six measures the following information is included for each college:
  - Historical FTES, Headcount
  - Demographics
  - Peer grouping summary



# Peer Groups

- For each college outcome, 6 peer groups have been developed
- Analyses were performed to find factors outside of the control of the college that predict the outcome
- Colleges were grouped based on clustering





# Peer Groups

- For example:
  - Transfer Rates are affected by:
    - Level of academic preparation of students
    - Distance to nearest UC/CSU
    - Income levels of service areas
    - Percentage of older students
  - Model
    - Pct age +25
    - Academic Preparedness
    - BA Index



# College Self-Assessment

- Colleges are NOT ranked!
- Analysis of college performance over the three-year period
- Analysis of status within peer group
- Note local factors that may help to explain outcomes but are not in the ARCC data
  - Diversity of programs
  - Changing transfer criteria
  - Issues with data\*
- College activities that could impact the numbers



# Summary

- ARCC Systemwide and College measures
- ARCC annual report
- Board of Trustees required to interact with the report within one year of its release
  - We will fold it into our annual workshop on institutional effectiveness