



Palomar College Office of International Education

- (1) Are your F-1 visa documents ready?
- (2) Report to Palomar College Office
- (3) International student orientation
- (4) Money Matters
- (5) Housing around San Marcos
- (6) Transportation around San Diego/San Marcos
- (7) Employment
- (8) Tasks before arriving the United States





Welcome to Palomar College

Congratulations on your acceptance into Palomar College. Your education at Palomar will prepare you to complete a 4-year university or provide professional skills to help you with your career. This document will prepare you to arrive and be successful at our college.

Change of Plans?

If you decide not to attend Palomar College, please inform us of your change of plans. Please email us of your change of plans at: internationalstudents@palomar.edu. Make sure to tell us your name and student identification number!

1. F-1 Student visa forms and requirements

Before you can start classes at Palomar College, you will need:

- **Valid passport from your country of residents**
- **SEVIS I-20 issued by Palomar College**

If you are currently attending another school in the United States, you will need a Palomar SEVIS I-20 prior to starting classes. Start at your current school to ensure your SEVIS I-20 form has successfully transferred to Palomar SEVIS School Code SND214F00077000

- **F-1 visa status**

Upon arriving to the United States, international students will need to show their passport with valid F-1 visa stamp along with the SEVIS I-20- form at the port of entry. Students applying for change in status to F-1, will need proof of change of status application or approval.

F-1 visa students at Palomar College agree to maintain F-1 visa requirements including:

- Register and attend a minimum of 12 academic units each semester
- At least 9 units of the 12 must meet in-person (weekly in-class meetings) each semester
- Cannot work without permission from the International Office

Learn about becoming an F-1 international Student <http://studyinthestates.dhs.gov/students/start>

The United States Department of Homeland Security has an informational website to help students prepare for studying in the United States. Please visit the URL above to receive detailed information that will help you understand each step you must take to make it to Palomar College.

2. Report to Palomar College International Education Office

When you arrive to California you need to report to the International Education Office located at 1140 West Mission Road, San Marcos, CA 92069. Bring your:

- Passport, SEVIS I-20 form(s)
- Official High school/university transcripts (for future use)
- Address where you are staying
- Medical and vaccination records (for future use)

3. International Student Orientation

You must attend International Student Orientation before classes begin. Check the [Newly Accepted Student website](#) for dates and locations. Failure to participate in all the orientation sessions may result in the cancellation of your classes. Please plan your arrival to Palomar College attend Orientation.

4. Money

You should bring enough money to last you at least one semester (*4 months*). Do not carry a large amount of cash. It is strongly suggested that you bring a credit card, in addition to a few hundred dollars cash. Be aware that it can take a week or more to open a bank account, and wire transfers can take 1-2 weeks.

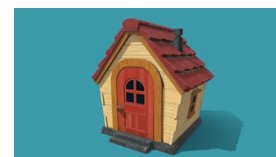


Tuition fees are due at the time of registration. You must pay all the fees on the same day as you complete your registration, or you may be dropped from classes.

- Palomar College credit cards (Visa, MasterCard, and American Express). In person you can pay by cash, traveler's check.
- We also offer a payment plan to divide paying fees throughout the semester. You can create a payment plan in your student online enrollment system. All fees may be paid before student can register for future semesters.

The following is an estimate of what it will cost you for one semester at Palomar College:

	Academic Expenses per semester (can pay be credit card)
\$5,100 minimum	Tuition and fees for 12 units (\$415 per unit) You must take a minimum of 12 units each semester. Typical students take 12-16 units pers semester
\$500	Textbooks (approximately)
\$15	Student ID/Activity Card (optional but provides bus pass discount)
	Additional Expenses per semester (some credit card, some cash or equivalent)
\$892.50	Mandatory accident/sickness Insurance (12 months=\$2142)
\$46	Parking Permit (if you drive to school)
\$232	Monthly bus/train pass if you use public transportation to get to school
\$6,000 - \$6,500	Homestay fees for one semester (16 weeks)
\$12,740 - \$15,000	ESTIMATED PER SEMESTER EXPENSES (Personal expenses are not included)



5. Housing around San Marcos

Homestay

Palomar College does not have any dormitories. **You must secure a place to live prior to your arrival.** Homestay programs provide short-term and long-term housing options for international students. You may contact any of the following private homestay service organizations. *Please note: Palomar College holds no responsibility for the posted ads other than a service to the students who desire housing, shared housing*

FA Homestay: *homestay and apartment options* <https://www.fahomestay.com/>

Education Bridge: *homestay* [Education Bridge](#)

Sara's Homestay: *homestay* sarahomestay.com

Airbnb is another option for short-term housing needs

Other housing options – need to complete in-person

Renting an apartment

Renting an apartment in North San Diego County can be very expensive. If you would like to rent an apartment, you may research availability over the Internet. Some of the sites we usually refer our students include: www.apartmentguide.com and www.apartments.com. The zip code for Palomar College is 92069. Be aware that apartments require additional responsibilities for furniture, connecting utilities, and Wi-Fi.

Finding a Roommate or Room for Rent

Once you get settled here and become familiar with the school system and environment, you may become interested in sharing an apartment or house with roommates. You can also check the housing bulletin board on the Student Life and Leadership website at: <https://www.palomar.edu/studentlifeandleadership/housing/>

6. Getting Around in the Community

Airport arrivals

Distance from Palomar College to airports:

- San Diego airport to Palomar College is about 50 miles (60-minute drive)
- Los Angeles Airport is about 100 miles (2 hour drive)

Transportation options from San Diego Airport:

- Free electric shuttle bus from the airport to Old Town Transit Center. At the Old Town Transit Center, you can take the Coaster commuter train to Oceanside (daytime only). From Oceanside, the Sprinter train to San Marcos
- Prime Time Shuttle: Offers shared shuttles, private shuttles, black cars, and SUVs
- SuperShuttle: Offers black cars and SUVs
- GO Airport Shuttle: Offers upfront pricing
- Ride Sharing apps such as Uber or Lyft

Public Transportation around Palomar College

The public transportation system is not very well established in North San Diego County. However, many students take the bus (Breeze) and/or the train (Sprinter) to come to school. <https://gonctd.com/> Students who purchase a student identification card upon arriving to Palomar can receive a discounted transit pass.

Driving

Some students prefer to drive to school. If this is the option you take, be prepared financially. You may need \$10,000 USD or more to purchase a reliable used car. California requires liability insurance to register a car.

7. Employment Opportunities are limited

Employment opportunities for F-1 visa holders are very limited, so make sure that you have enough money for the entire period of your stay. *Do not depend on an on-campus job to pay for your tuition or housing.* It will not be enough. Information on job options and requirements will be discussed on Palomar College International Student Orientation.

8. Things to Do Before Arriving at Palomar College



1. Accident/Sickness Insurance

International students studying at Palomar College are required to purchase the international student sickness/accident insurance policy, even if you have your own insurance policy. No other policy will be accepted. Students must show proof of insurance every semester.

2. Medical/Dental/Vision Check-ups

You are strongly recommended to have medical, dental, and vision exams before you come to the U.S. The accident/sickness insurance policy does not cover your dental or vision needs, and these services in the U.S. are very expensive. If you have any cavities, make sure that you complete your dental work before you leave home.

3. Register for classes

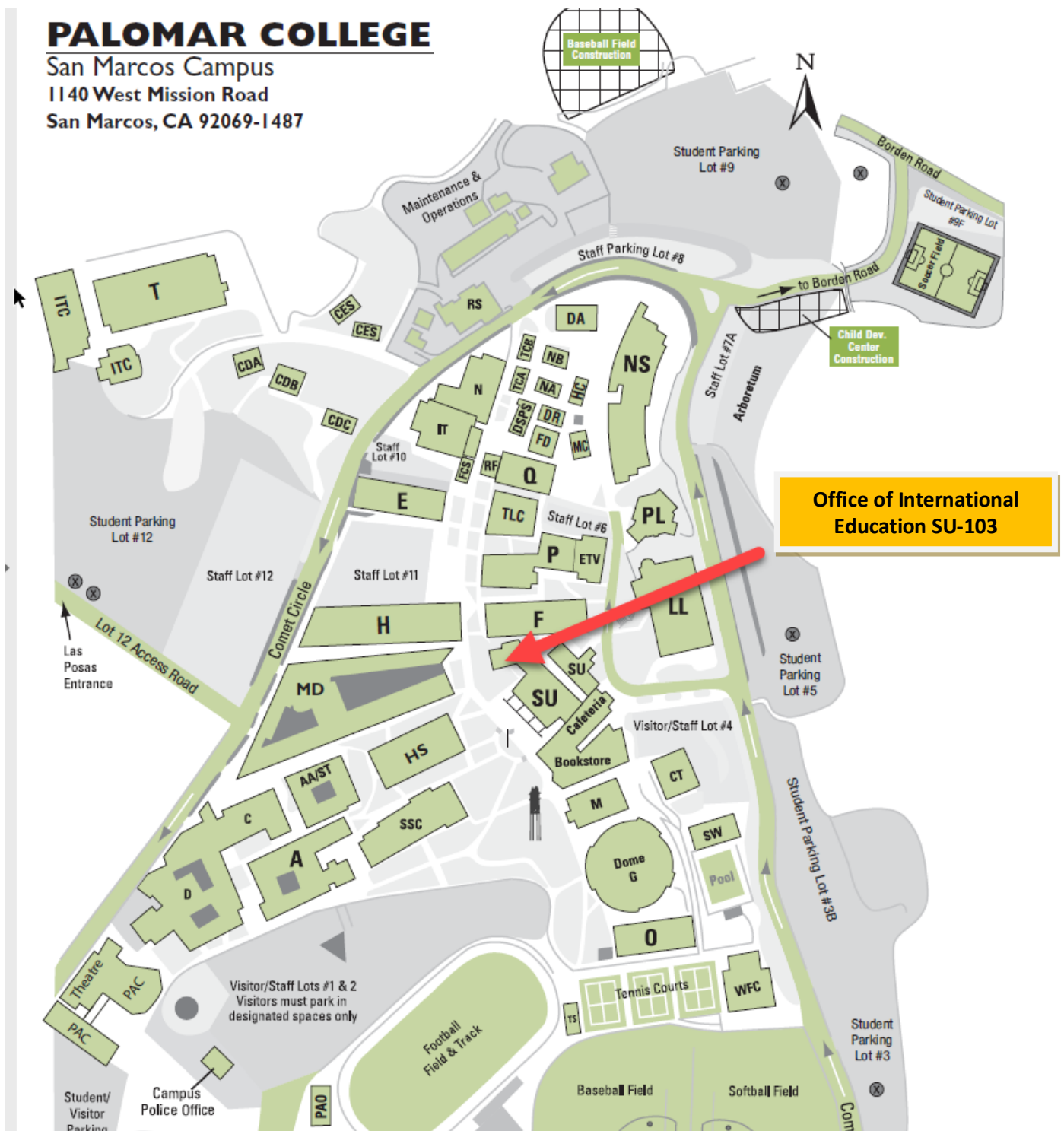
Class enrollment begins 3-4 months before the start of the semester. You will follow the steps to create your student account and select classes.

PALOMAR COLLEGE

San Marcos Campus

1140 West Mission Road

San Marcos, CA 92069-1487



Palomar College
Office of International Education

1140 West Mission Road

San Marcos, CA. 92069

Phone: (760) 744-1150 Ext. 2167

Fax: (760) 761-3592

Email: internationalstudents@palomar.edu

Website: www.palomar.edu/internationalstudents



We'll see you here for orientation!

Room SU-103