



CURATED SPACES

JESSICA CORN

CURATEDSPACES.IT.COM



TABLE OF CONTENTS

- TABLE OF CONTENTS
- ABOUT ME
- DESIGN PHILOSOPHY
- LOGO SIGNIFICANCE
- ILLUSTRATIONS
- MATERIALS BOARD
- DRAFTING
- REVIT
- AUTOCAD
- THANK YOU
- CONTACT INFORMATION



ROOTED BEGINNINGS

Interior design first sparked my interest through the hours I spent designing homes in *The Sims*—a playful beginning that revealed my eye for spatial flow and atmosphere. What started as a creative escape quickly evolved into a deep passion for materiality, composition, and storytelling through design. Today, my work blends mid-century modern influence with natural elements, emphasizing warmth, character, and a sense of calm. I'm drawn to spaces that feel both refined and lived-in, where organic textures, thoughtful details, and timeless materials come together to create environments that are personal, grounded, and quietly luxurious.

DESIGN PHILOSOPHY

Influenced by mid-century modern style and natural elements, I emphasize warmth, character, and a strong connection to nature. Warm wood tones in shelving, ceilings, and furniture add coziness and timeless appeal, while large windows and skylights fill interiors with natural light, blurring the line between indoors and outdoors. Biophilic elements enhance this connection, fostering tranquillity and well-being.

Clean-lined, functional furniture anchors each space, complemented by eclectic, artistic touches like vintage finds, antique mirrors, stained glass accents, and ornate shelves. These curated details add history and individuality, creating a sense of storytelling. Textural richness—cozy textiles, mosaic tiles, and natural stone—balances modern materials, while ambient lighting adds warmth. Thoughtfully layered textures, cohesive colour schemes, and a mix of contemporary and vintage elements ensure every space is not only beautiful but deeply comforting. My goal is to craft environments that embody modern elegance, natural warmth, and a quiet sense of luxury—spaces that feel as inviting as they are inspiring.





BEHIND THE LOGO

I designed my logo with the intention of capturing the spirit of mid-century modern style while creating something deeply personal and symbolic. The woodgrain-inspired pattern, which also subtly resembles a fingerprint, reflects both the organic materials central to my work and the individuality behind each project. Encircling the design the crescent form evokes the image of a moon serving as a quiet, sculptural gesture that reflects my aesthetic sensibilities: calm, grounded, and intentional. It's a mark that feels warm and composed, much like the interiors I create.

ILLUSTRATIONS



01. PENCIL

Drawing with pencil requires a careful balance of pressure, layering, and precision. Through subtle shifts in tone, pencil allows for both control and expression, making it a powerful medium for capturing nuance and atmosphere.

02. PEN

Drawing with pen requires confidence and precision—every mark is permanent. Without the ability to erase, it emphasizes line quality, composition, and control, relying on techniques like hatching and stippling to build texture, depth, and contrast.

03. MARKER

Drawing with marker involves bold commitment and control over intensity, layering, and blending. Its fluidity allows for rich color and contrast, but demands precision to avoid streaks or oversaturation, making planning and technique essential.



01. PENCIL

This drawing was part of an exercise from my Presentation Methods class, where we were asked to translate a reference image into a pencil rendering. I chose this interior scene for its warmth, curvature, and layered textures—elements I'm naturally drawn to in my design work. The process challenged me to communicate mood and materiality through tone and line work alone, reinforcing how much can be conveyed through subtle shifts in shading and detail.



02. PEN

This pen drawing, completed with Micron pens, was an exercise in translating a reference image using only line. Without the aid of tonal shading, I relied on cross-hatching, contour, and line density to suggest depth, texture, and lighting. The process pushed me to focus on precision and rhythm, honing my ability to communicate materiality and atmosphere through minimal yet intentional marks.



03. MARKER

This marker drawing was an exercise in using warm grey tones to convey depth, form, and contrast. Created with Copic markers, it challenged me to build dimension through layering and control, focusing on how a single tonal range can define space, texture, and light. It also helped refine my understanding of value and how subtle shifts can shape a compelling interior composition.



03.1

MARKER

This marker drawing was created using Copic markers and a white gel pen as part of a rendering exercise. I used warm tones to express the wood cabinetry and added subtle gradients for depth and realism. The white gel pen was applied to define the grout lines between the blue backsplash tiles, helping the surface read more dimensionally. This process emphasized clarity, materiality, and contrast in a clean, structured kitchen composition.

inspiration image



MATERIALS BOARD

A materials board is a physical or digital presentation tool used by interior designers to showcase the color palette, textures, finishes, and materials selected for a project. It helps communicate the tactile and visual tone of a space, offering a cohesive snapshot of the overall design concept.



Soho Hall Design
— SCULPTED SERENITY —

1620 5th Street Office Design

— GROUNDED WORKSPACE —



DRAFTING



01. SITE PLAN

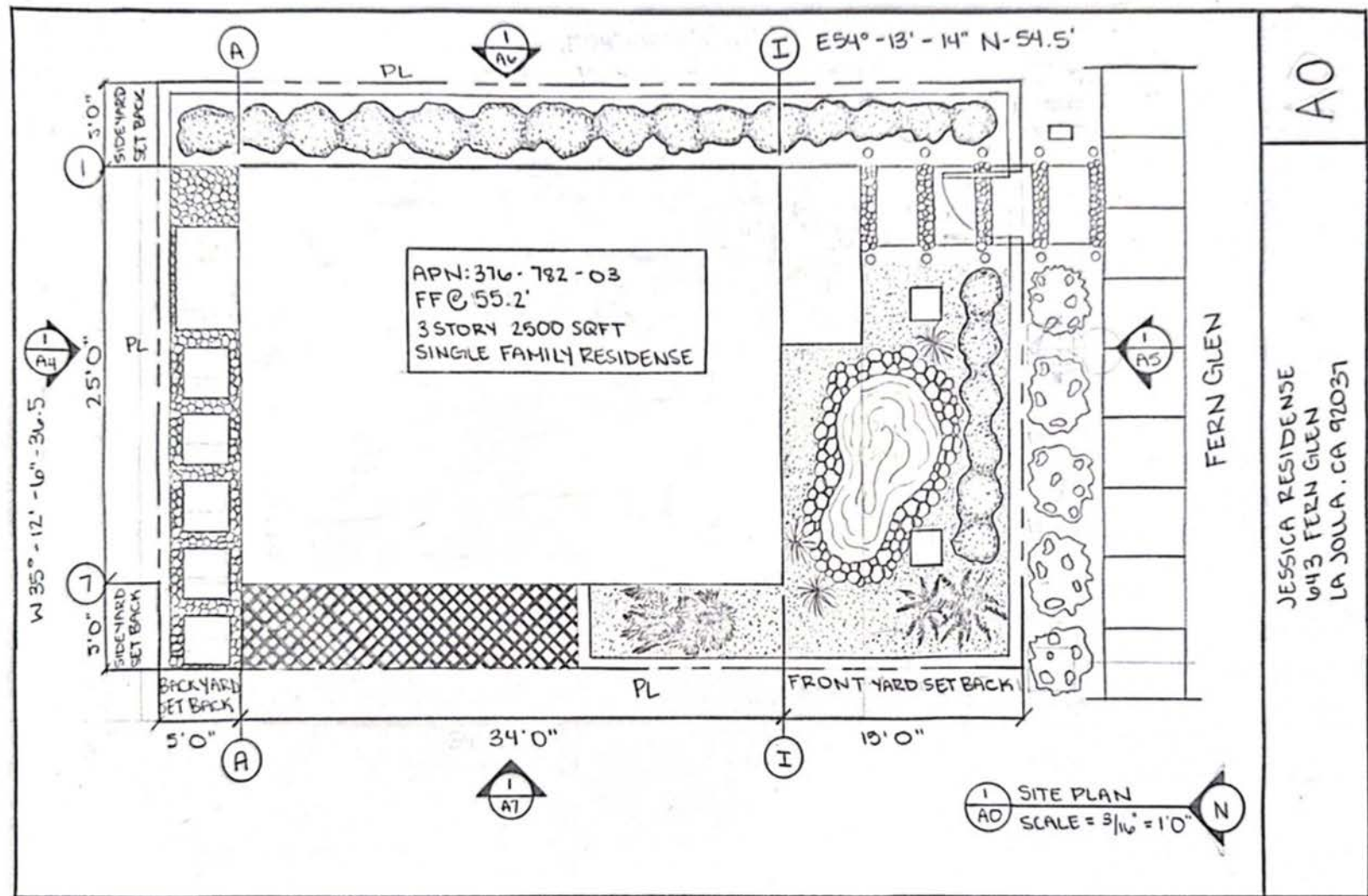
A site plan is a scaled drawing that shows the overall layout of a building or project within its property boundaries. It includes elements like structures, landscaping, pathways, and setbacks, providing context for how the design interacts with its surroundings.

02. FLOOR PLAN

A floor plan is a scaled, top-down view of a building's layout that shows the arrangement of rooms, walls, doors, and windows. It helps visualize how spaces flow and function within the structure.

03. ELEVATIONS

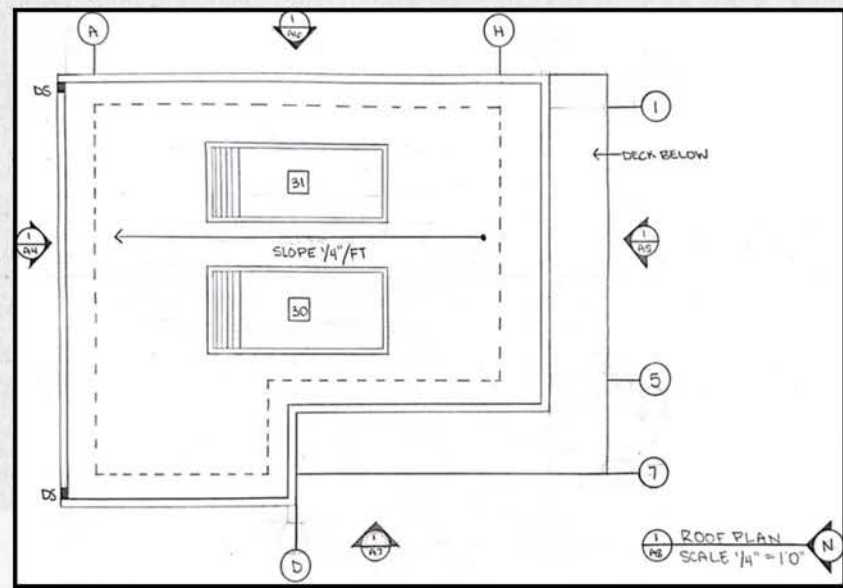
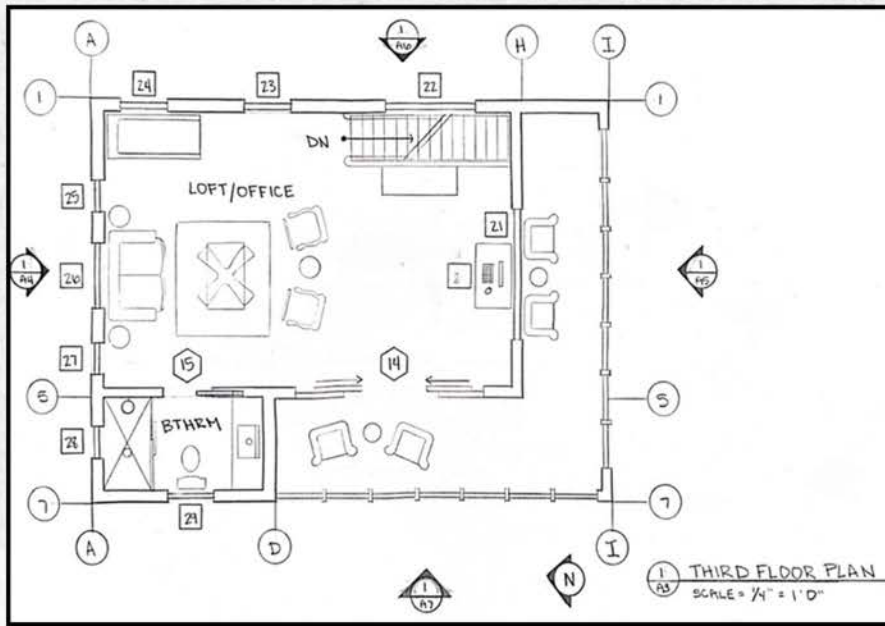
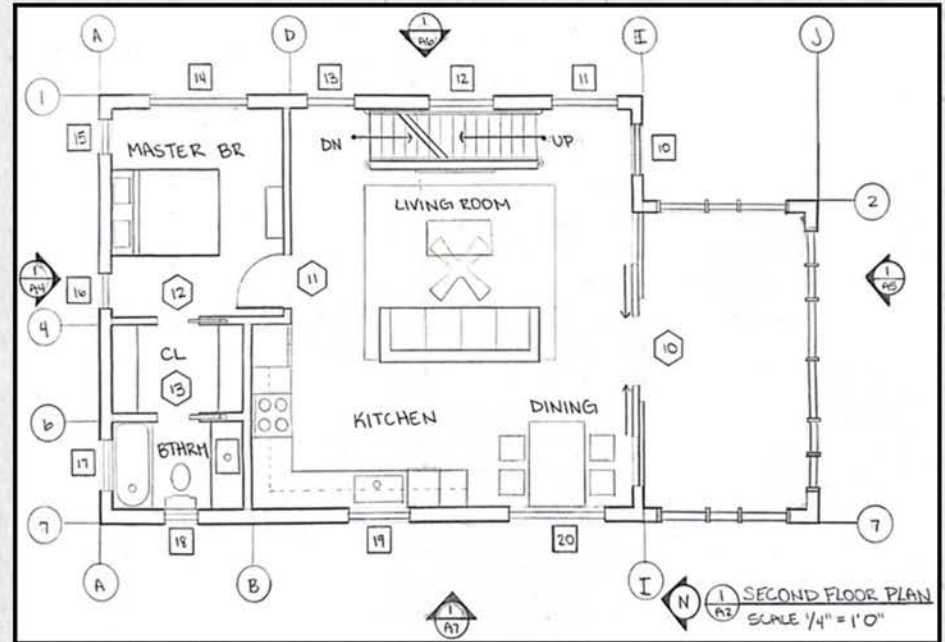
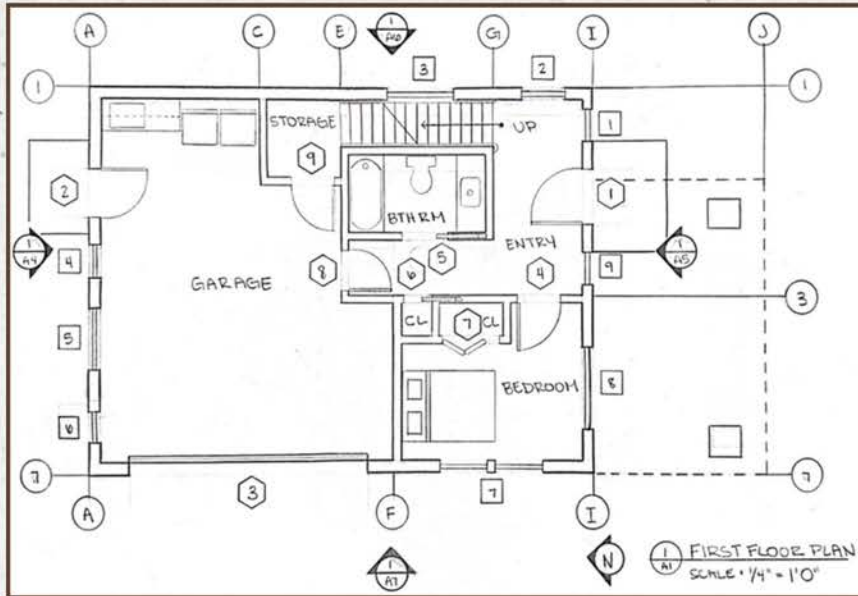
An elevation view is a flat, two-dimensional drawing that shows one side of a structure, depicting height, materials, and architectural details. It helps convey the external appearance and vertical relationships of a building's design.



Designed for my Architectural Drafting final, this three-story La Jolla residence sits on a corner lot and blends coastal warmth with clean modern lines. The elevation features a refined mix of vertical wood siding, smooth stucco, and textured stone, creating contrast and rhythm across the façade. Layered landscaping with native plants and a curved entry path softens the structure and enhances its connection to the surrounding environment.

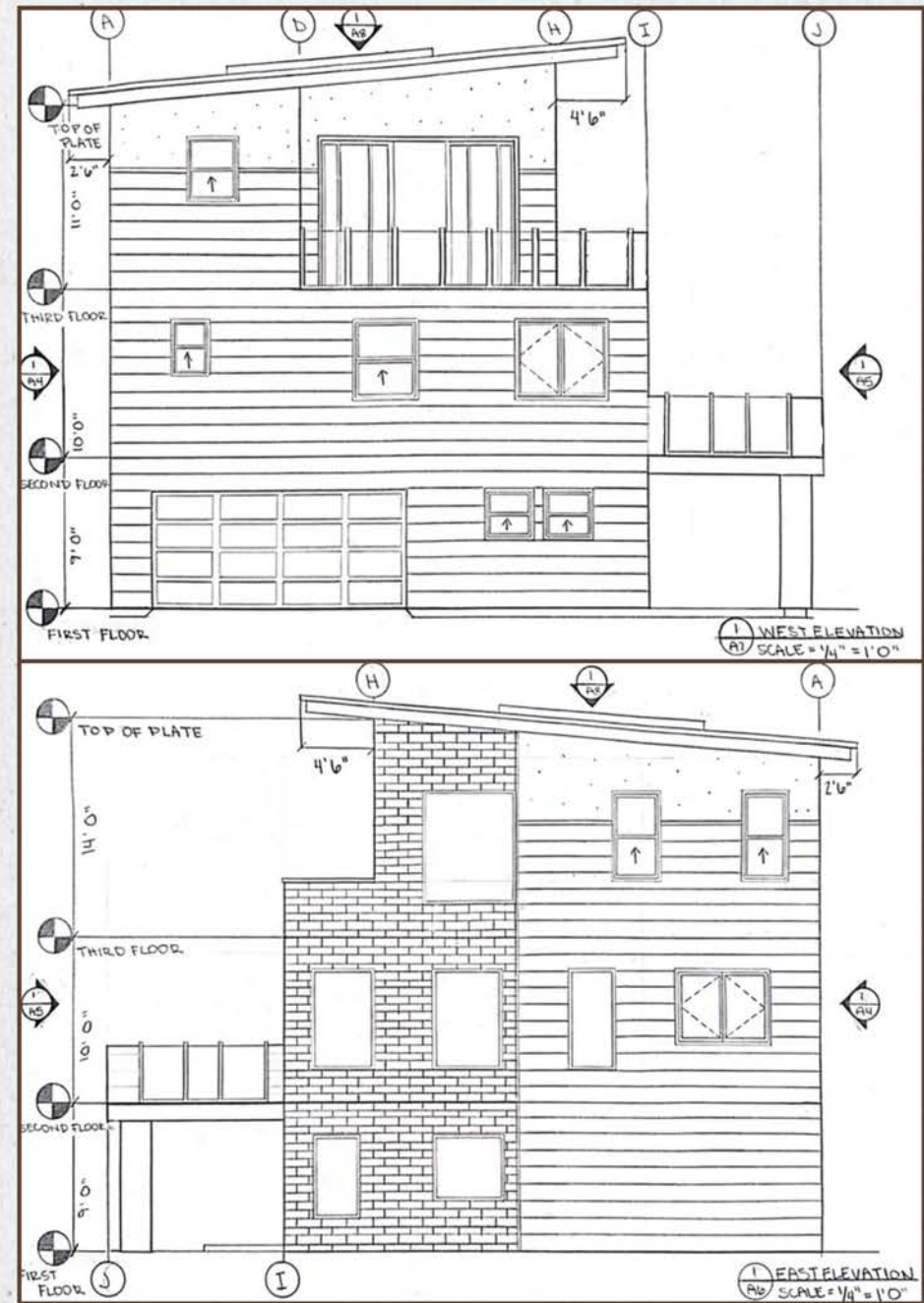
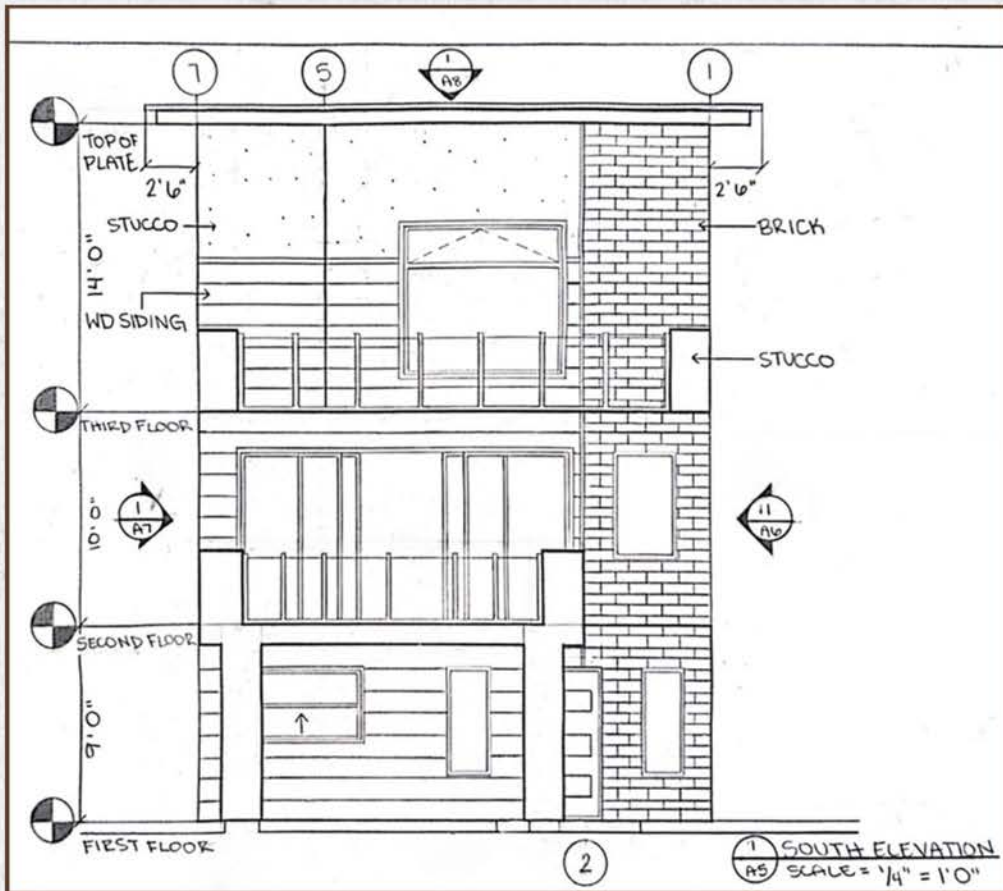
643 FERN GLEN, LA JOLLA CA

ARCHITETURAL DRAFTING



643 FERN GLEN, LA JOLLA CA

ARCHITETURAL DRAFTING



Inspiration Image

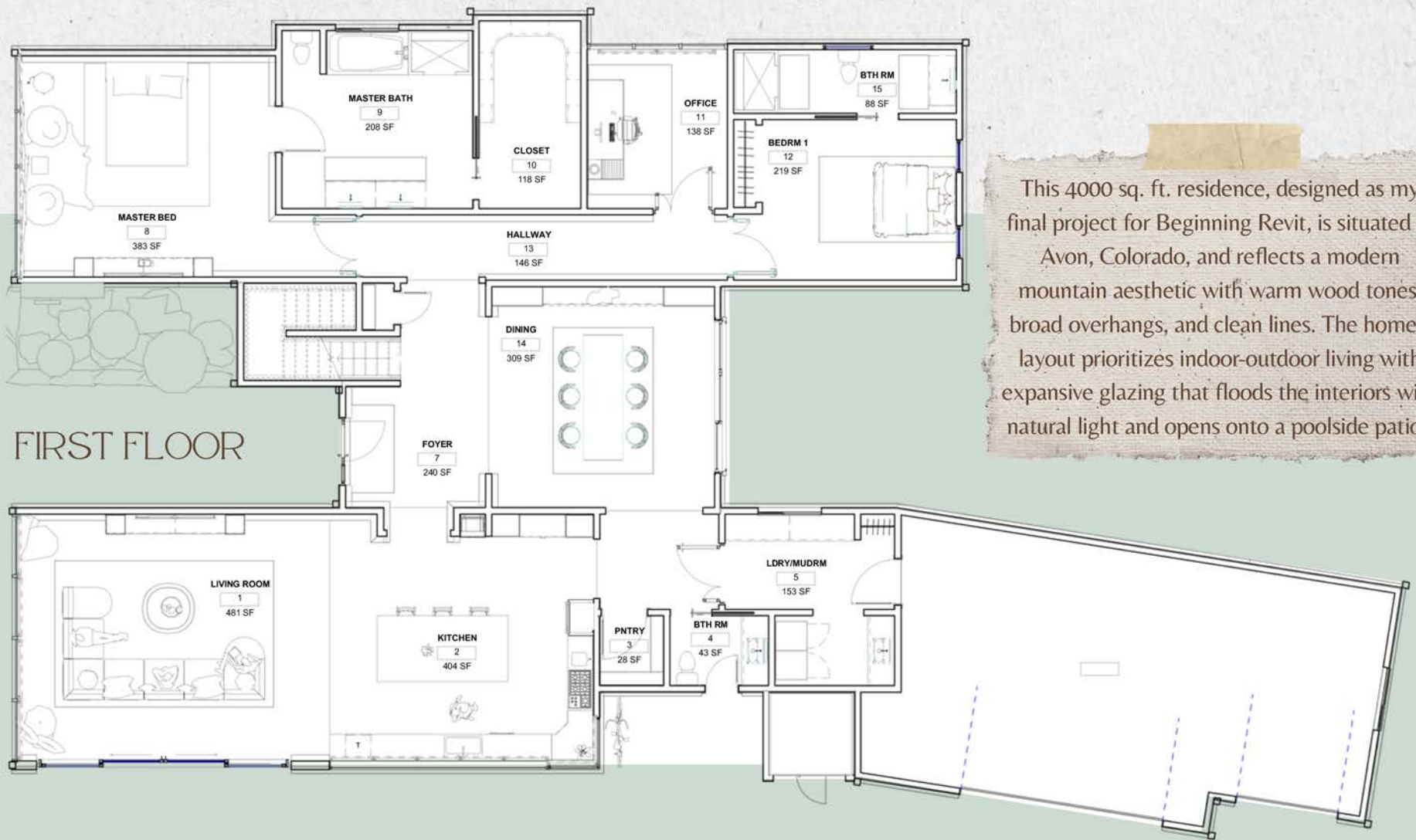


REVIT

Revit is a powerful Building Information Modeling (BIM) software used in architecture and design to create precise 3D models, detailed floor plans, and coordinated construction documents. It streamlines workflows by integrating design, documentation, and visualization into one cohesive platform.

84 SHOOTING STAR, AVON CO

BEGINNING REVIT



This 4000 sq. ft. residence, designed as my final project for Beginning Revit, is situated in Avon, Colorado, and reflects a modern mountain aesthetic with warm wood tones, broad overhangs, and clean lines. The home's layout prioritizes indoor-outdoor living with expansive glazing that floods the interiors with natural light and opens onto a poolside patio.

84 SHOOTING STAR, AVON CO

BEGINNING REVIT



SECOND FLOOR

The upper level features a light-filled loft repurposed as a yoga and fitness space, alongside a serene bedroom suite and a nature-inspired bathroom. Framed by a large window and layered in earthy tones, the bath invites the outdoors in, creating a warm and grounded retreat.

84 SHOOTING STAR RENDERINGS





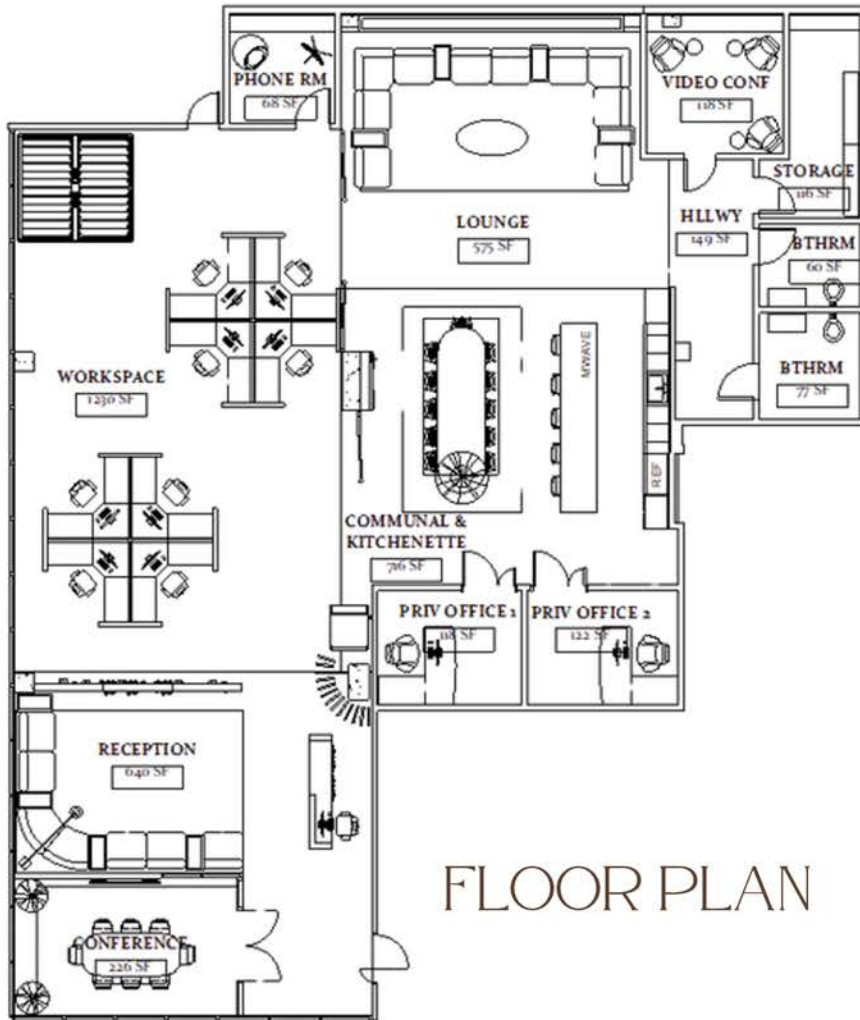
84 SHOOTING STAR RENDERINGS

The first image captures the heart of the Avon residence: a 885-square-foot living and kitchen area designed for effortless hosting. Expansive glass doors open to the outdoor patio, creating a fluid connection between interior comfort and open-air leisure. In the second image, the upstairs bathroom is grounded in earthy tones and defined by a large picture window that draws nature inward, making the space feel both serene and rejuvenating.

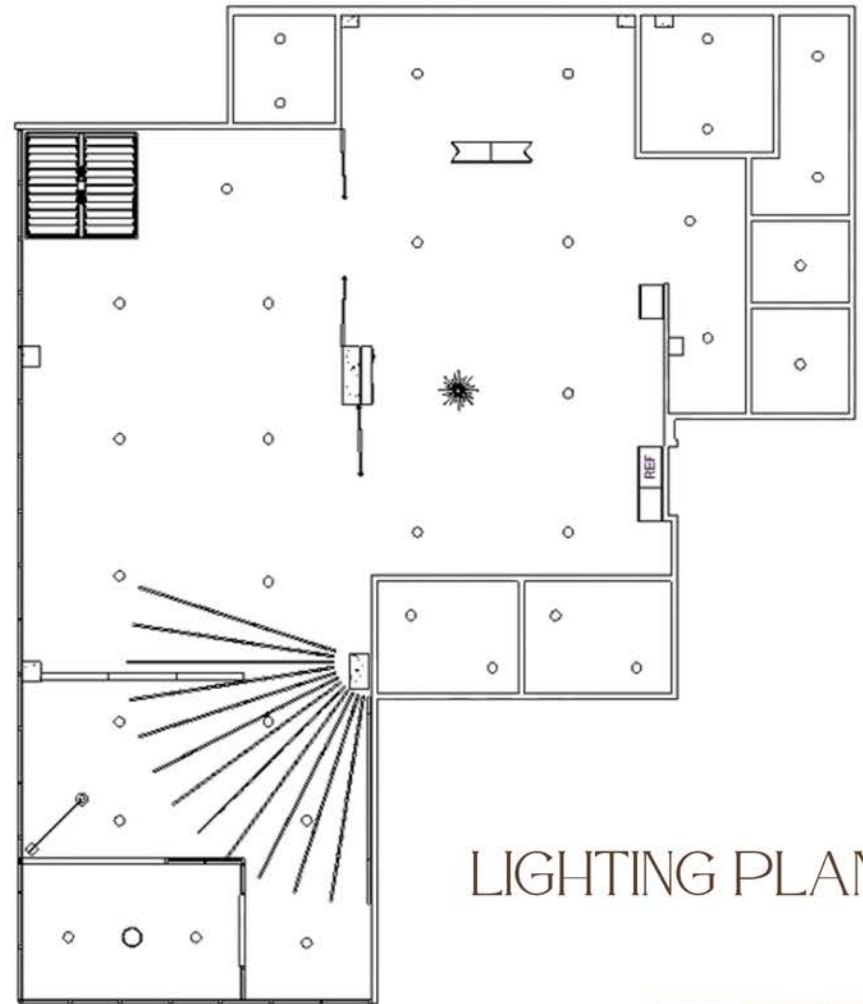


1620 5TH STREET, SAN DIEGO CA

COMMERCIAL DESIGN



FLOOR PLAN



LIGHTING PLAN

1620 5TH STREET RENDERINGS

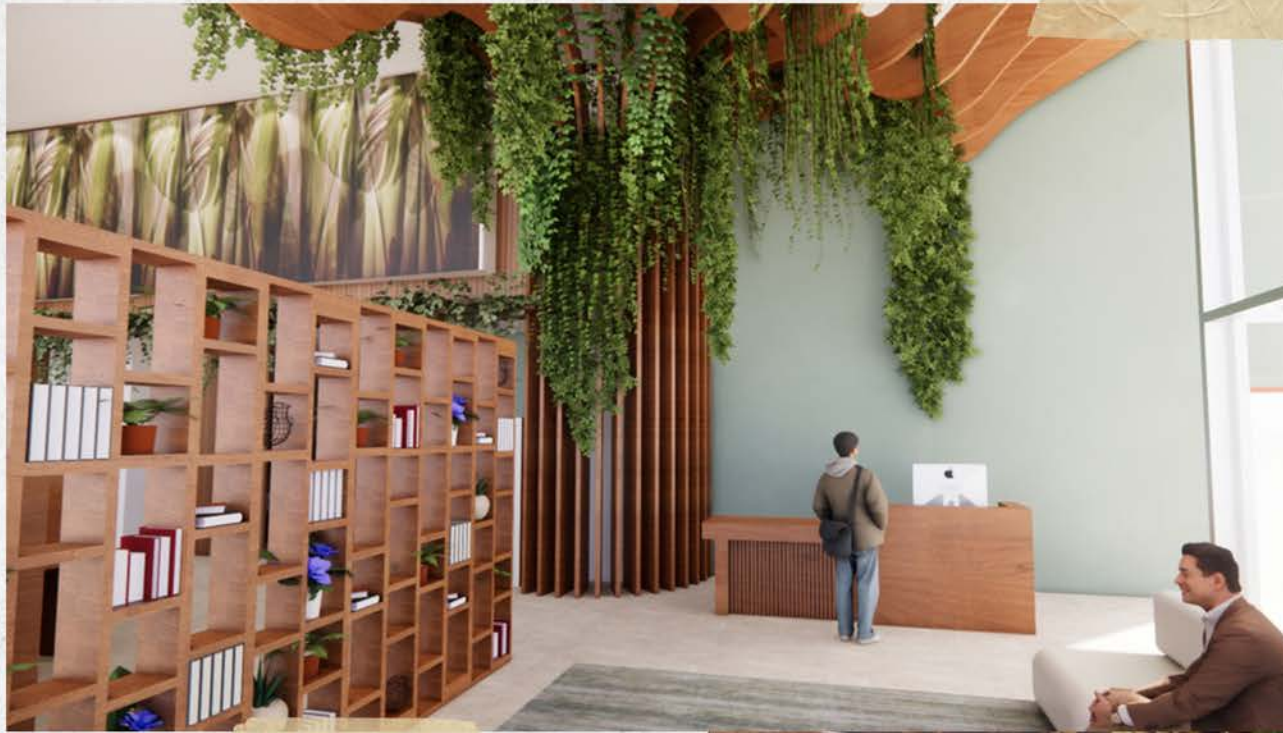


This commercial design project, located in San Diego, was created to support a hybrid work model that blends flexibility with professionalism. The space includes eight cubicle-style desks for drop-in workers, two private offices, two video conference rooms, and one large conference room. The kitchen and dining area offer a welcoming, communal vibe—designed to seat sixteen while encouraging casual conversation and team bonding.

The adjacent lounge, which seats a minimum of ten, provides a warm, inviting atmosphere with soft seating, layered textures, and calming tones—ideal for client interactions or quiet moments away from the desk. A sound-dampening wood-slat partition subtly defines this area, helping to reduce noise spillover and maintain focus throughout the workspace.



1620 5TH STREET RENDERINGS



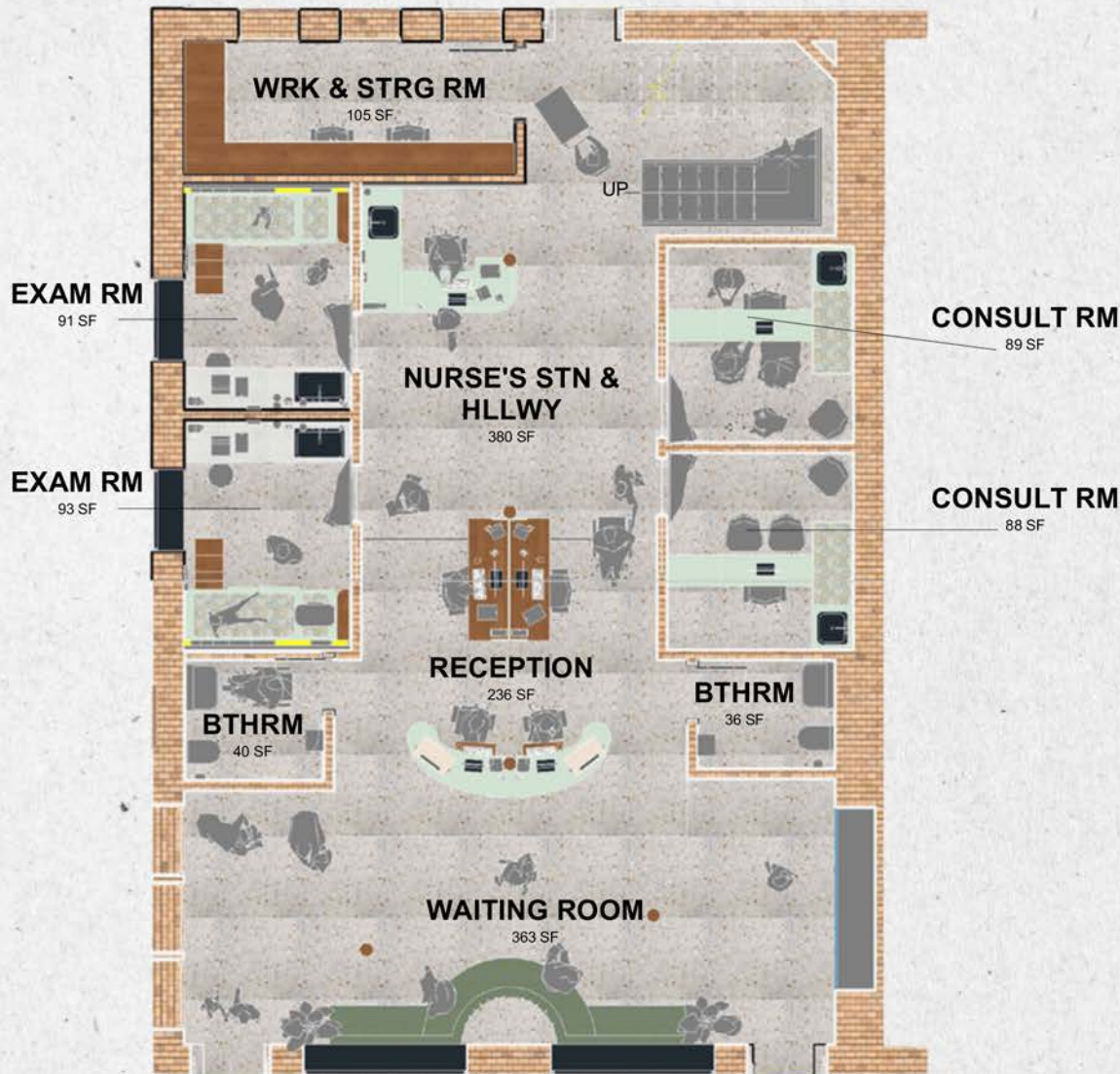
This reception space for Growfish—a marketing brand committed to sustainability—embraces biophilic design and natural materials to reflect the company’s eco-conscious mission. Centered around a sculptural tree-like column I custom-designed, the space features warm wood tones, cascading greenery, and soft natural light to create a welcoming, grounded atmosphere that speaks to environmental responsibility and calm professionalism.



PEDIATRIC OFFICE

SPACE PLANNING

FLOOR PLAN



This pediatric office was designed to balance warmth, functionality, and visual engagement for a wide age range of patients and their families. Working within strict spatial constraints including a fixed building footprint and three immovable columns, I organized the space to prioritize flow, function, and accessibility. A central tree-like column anchors the reception area, with custom built-in seating, curved wood forms, and cascading greenery that echo biophilic design principles.

The waiting area features a playful treehouse-like platform where teens can lounge in floating bubble chairs, accompanied by two age-appropriate entertainment screens. Below, a large built-in aquarium and a ceiling mural of a sky offer calming visual stimuli for younger children and infants. Thoughtfully integrating natural elements into the space supports improved well-being, mood, and recovery—transforming a typical clinical visit into a more positive experience.



PEDIATRIC OFFICE RENDERINGS

These renderings highlight two of the pediatric office's most engaging features: the sculptural tree column and the elevated treehouse-style play area. Designed to spark imagination and ease anxiety, the space uses natural forms, warm wood tones, and playful seating to create a welcoming environment that feels more like a whimsical hideaway than a medical office.





PEDIATRIC OFFICE RENDERINGS

This slide highlights the nurse's station, thoughtfully designed with curved custom millwork and soft lighting to create a welcoming and efficient hub for staff. Adjacent to it, a cozy corner of the waiting room features a built-in coat rack and a large aquarium—an engaging visual element that offers a calming distraction for children and parents alike.

PEDIATRIC OFFICE RENDERINGS

This pediatric exam room was designed to feel warm, safe, and approachable for children of all ages. With whimsical cloud wall decor and soft, natural tones, the space aims to ease anxiety and create a calming, playful environment. Every furniture piece was custom-built in Revit to support both function and comfort, helping young patients feel more at home the moment they step inside.



The exam table was designed with both safety and accessibility in mind, featuring integrated steps that tuck seamlessly into the base—making it easy for toddlers to climb up independently. Generous built-in storage compartments allow for convenient access to medical supplies or toys, helping to keep the environment both organized and engaging for young patients.

CULTURAL INSITUTE

SPACE PLANNING





Inspirations by Image

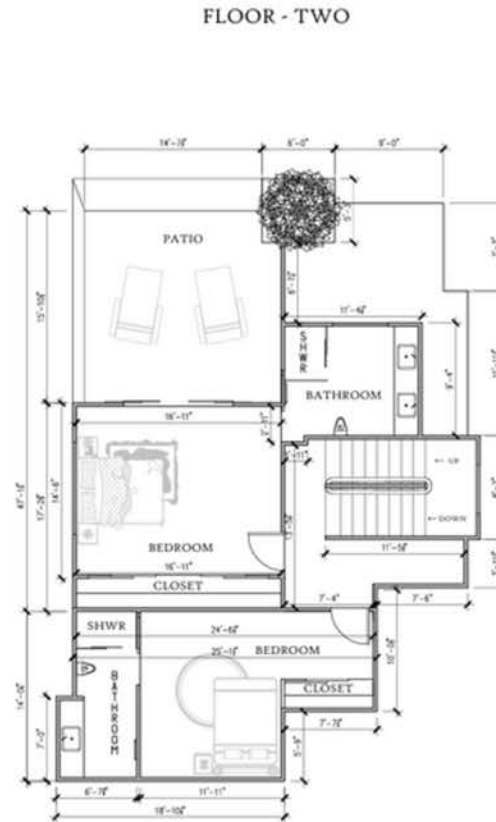
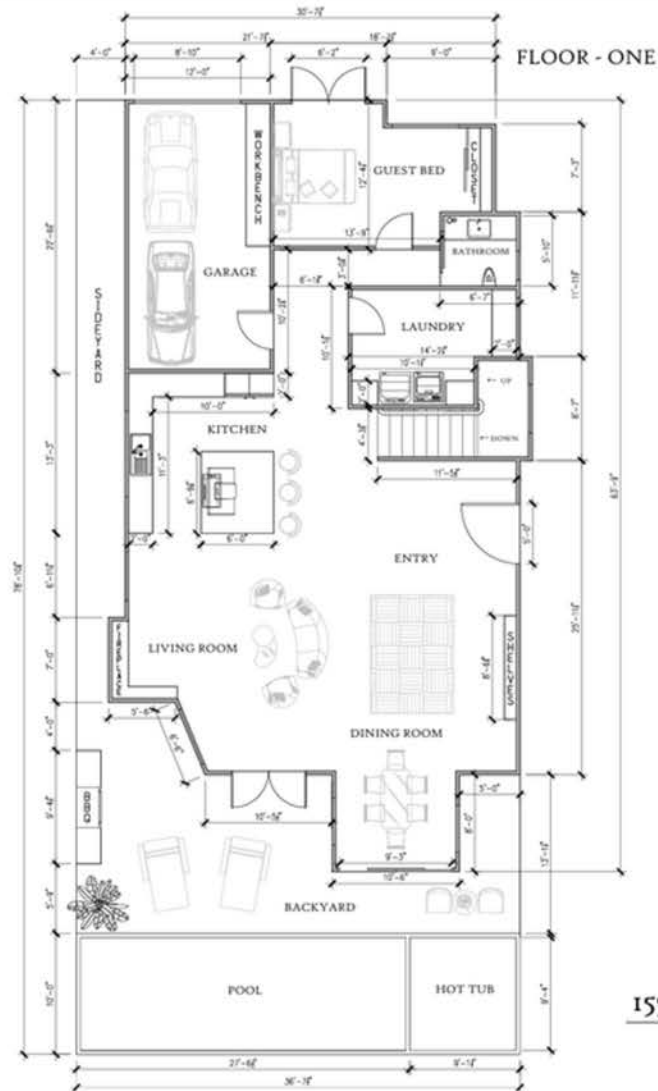


AUTOCAD

AutoCAD is a computer-aided design (CAD) software used to create precise 2D drawings and technical plans. Its accuracy, layering system, and customization tools make it essential for architects, designers, and engineers.

155 27TH STREET, DEL MAR CA

AUTOCAD



155 27 TH STREET, DEL MAR - FLOOR PLAN

1/4" = 1'



Revision	By

155 27th Street
Del Mar, CA

Date: 12 DEC 2011
Scale: 1/4" = 1'
Drawn By: 12 DEC 2011
Job Number: 4
Sheet Number:

1

155 27TH STREET, DEL MAR CA

AUTOCAD



155 27 TH STREET, DEL MAR - ELEVATION

1/4" = 1'

For my AutoCAD final, I set out to recreate a striking home I had driven past along Camino Del Mar. With no access to existing drawings or dimensions, I used a car parked in front of the house (found on Google Maps) as a reference for scale, allowing me to estimate proportions and draft the floor plan and elevation from scratch. The process challenged my spatial awareness, accuracy, and creativity—turning an everyday moment of inspiration into a fully detailed drawing set.



THANK YOU

— CURATED SPACES BY JESSICA CORN —

CURATEDSPACES.IT.COM

GET IN TOUCH

Thank you for taking the time to view my presentation—I truly appreciate your attention and interest in my work. I'm looking forward to connecting and exploring new opportunities to collaborate and grow within the design community.



PHONE NUMBER :
(760)-505-0919

EMAIL ADDRESS :
JCORN@CURATEDSPACES.IT.COM

WEBSITE:
CURATEDSPACES.IT.COM