

Ella's Home

Andrea Luna | ID 100



Concept Statement

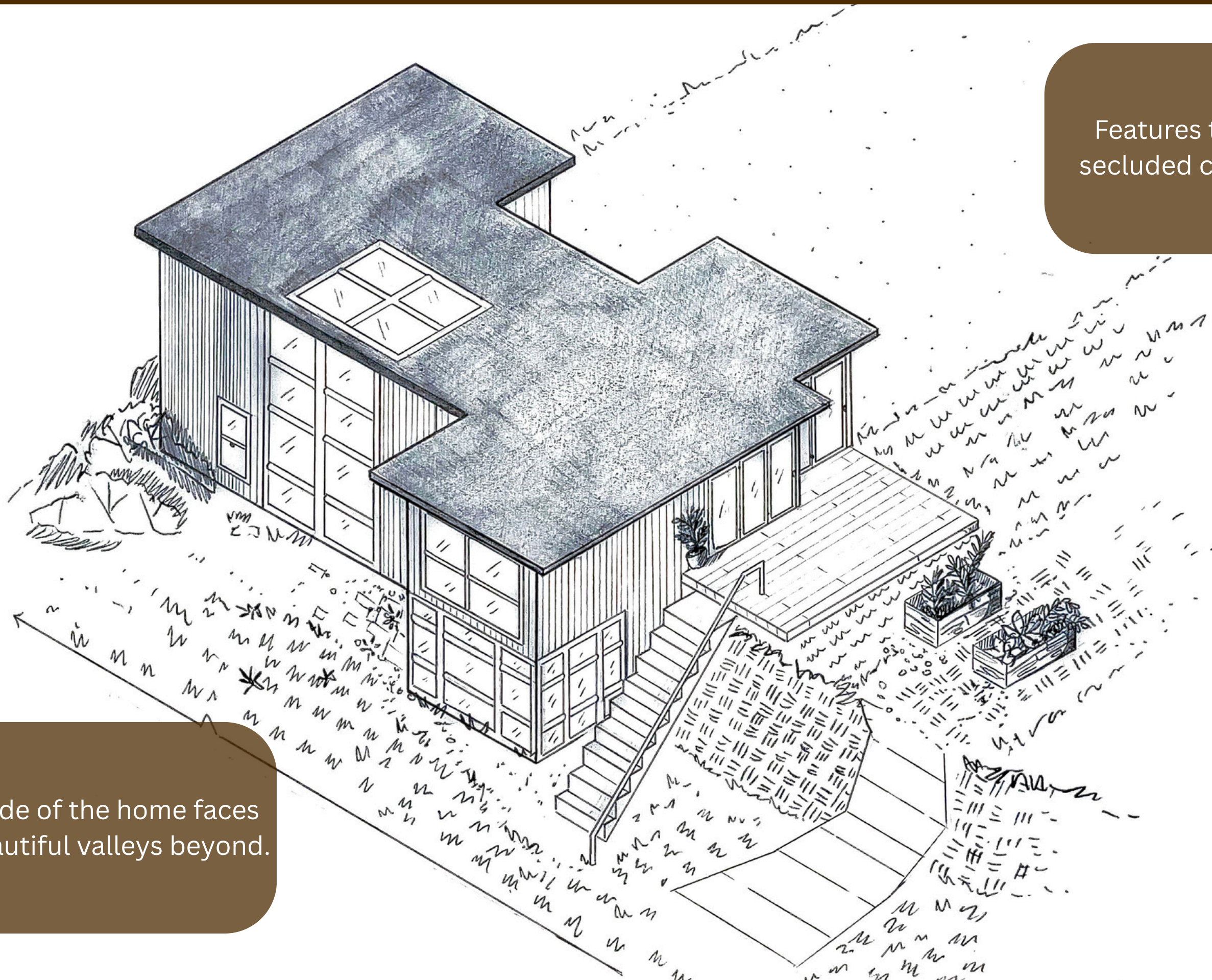
The home is intended to be a traveler's dream and an archeologist's sanctuary. The office/ library is one of the main **focal points** and is located at the center of the home. It gives an immediate sense of grandiosity via the tall, vertical walls, lined with books and the artifacts clustered around the space. The space intends to strike an elegance and sense of mystery through its dark academic aesthetic - achieved through dark tones and textures as well as dramatic lighting with the use of skylights. In **contrast** to the dark atmosphere the office/library evokes, the rest of the home intends to feel open, simple and calm, creating an overall sense of comfort. **Cool colors** will live throughout the space. The home also needs to adapt to the needs of a large family, holding great amounts of storage and immediate accessibility throughout public spaces (ie. kitchen, dining room and living room). Beyond conventional homespaces, a bee lab will also be housed, providing a semi-professional space where the owner can run experiments in the comfort of their own home. The area will seamlessly transition to a garden outside that runs around the perimeter of the home. While the intention of the garden is to enhance the outside scenery, it is also meant to provide a home for bees and food for the family.

Features the back of a
secluded cliffside home.

Exterior Elevation

SCALE: 1/4" = 1' - 0"

This side of the home faces
the beautiful valleys beyond.





Valley Center, CA

Bubble Diagrams

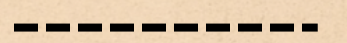
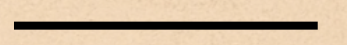
KEY

Private Spaces

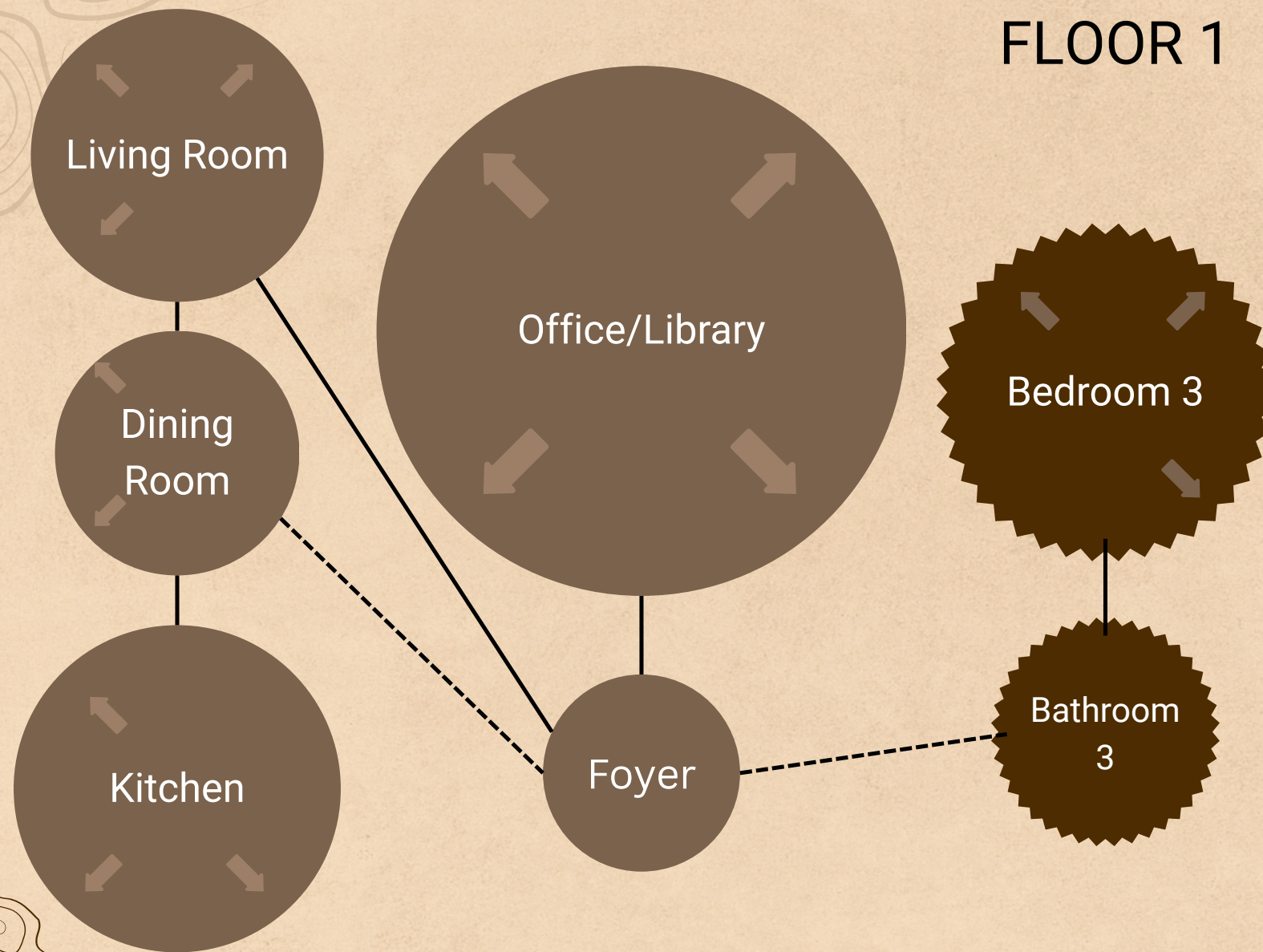
Public Spaces

Immediately Adjacent

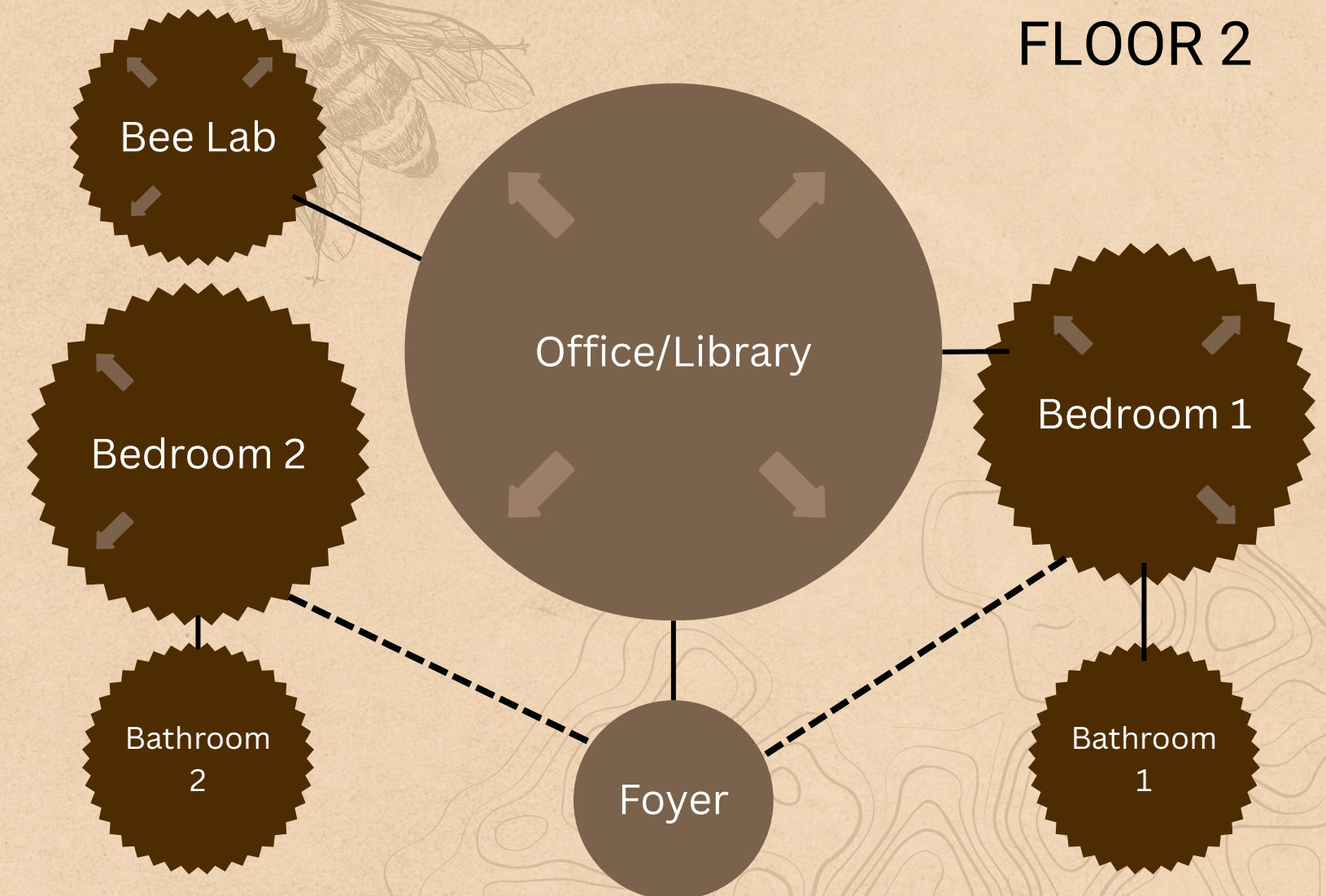
Somewhat Adjacent



FLOOR 1



FLOOR 2

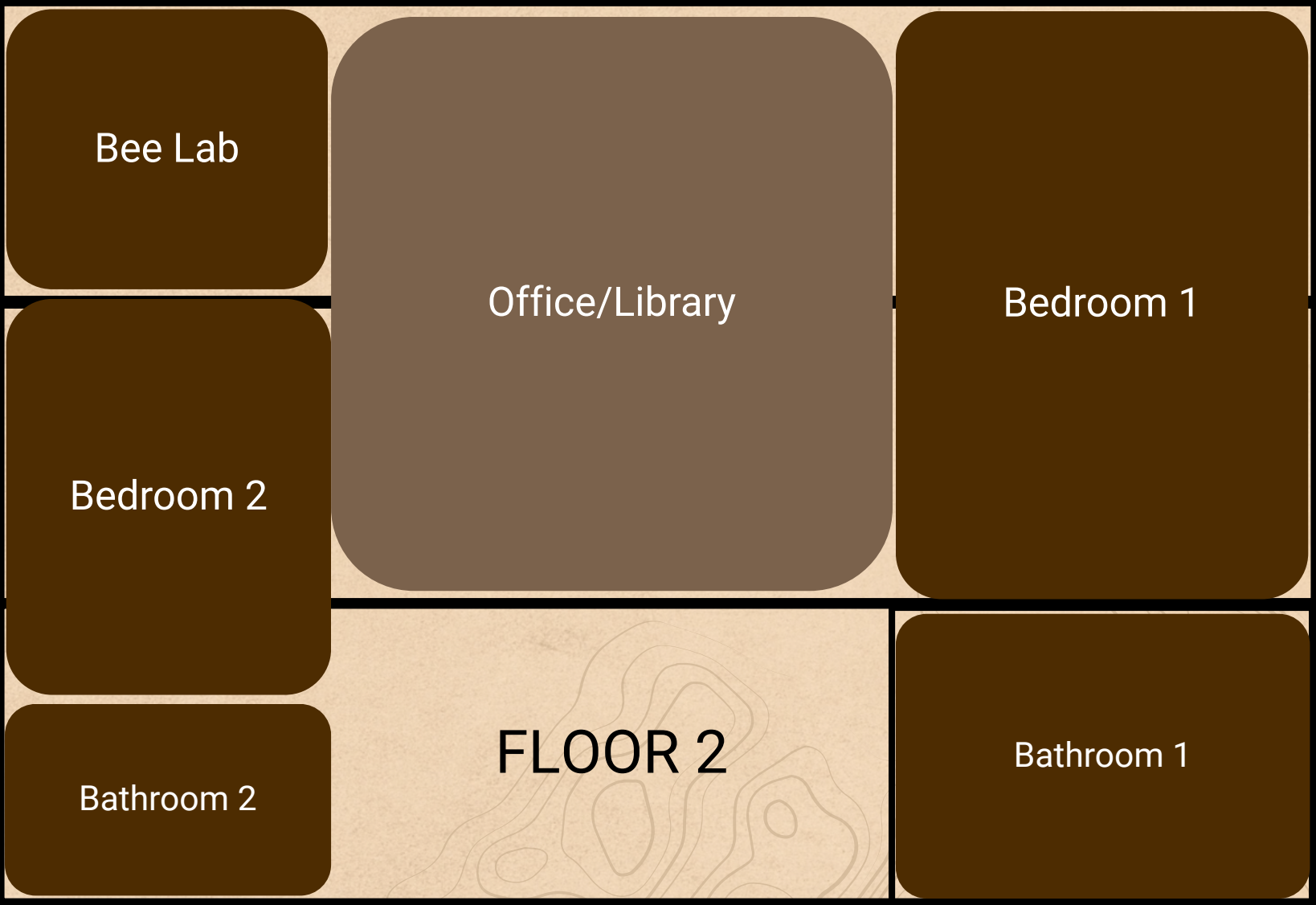


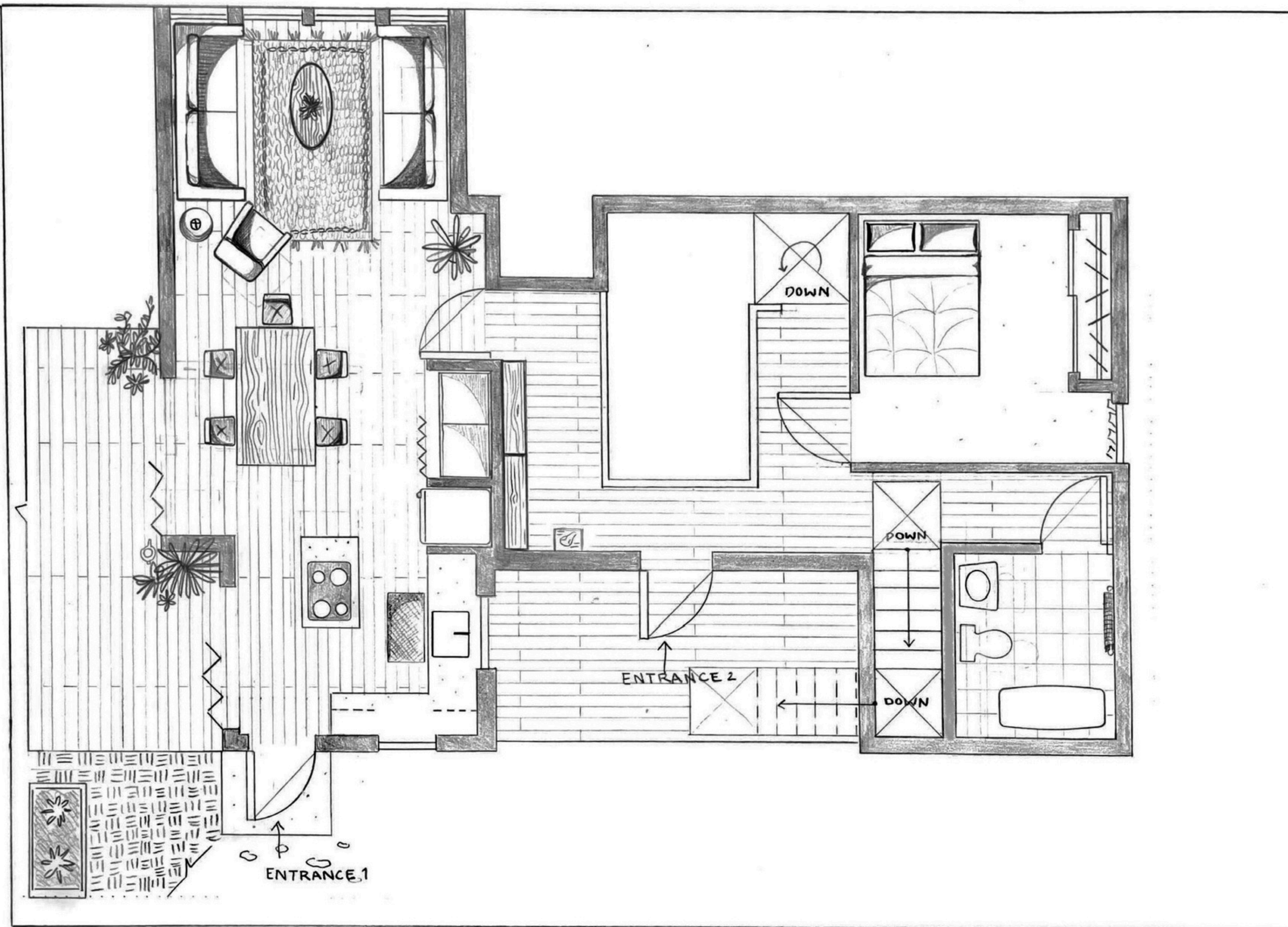
Bubble Diagrams

KEY

Private Spaces

Public Spaces



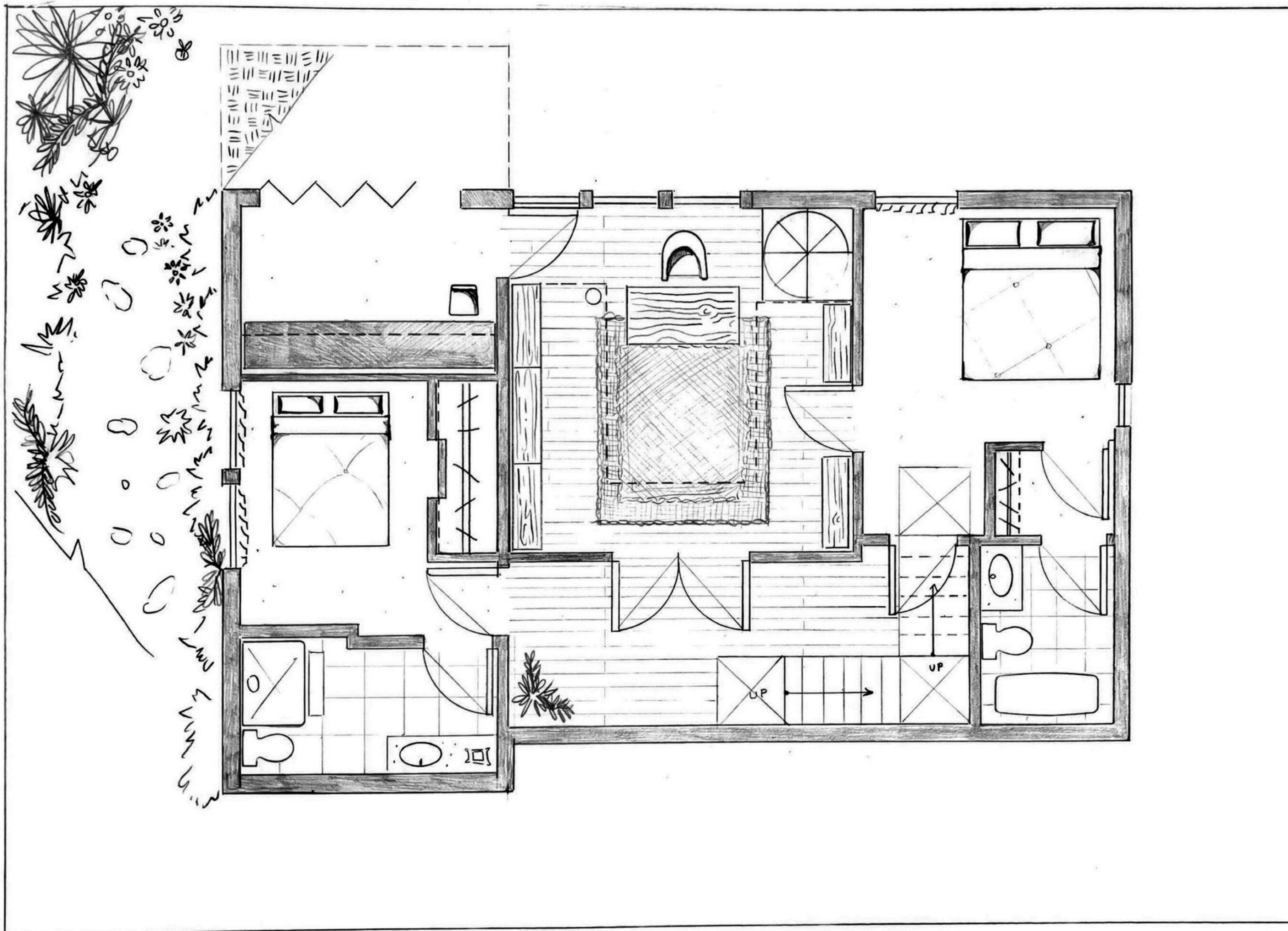


Floorplans

Level 1

SCALE: 1/4" = 1' - 0"

There are two main entrances to the home. One of which gives access to more public spaces such as the kitchen, dining and living room area. While the other entrance gives access to more private spaces such as the bedrooms.



Floorplans

Level 2

SCALE: 1/4" = 1' - 0"

An L - shaped staircase gives access to the lower level. While this level is not visible from the entrance of the home. Stairs and a ramp, for greater accessibility, offer access to this level from the exterior.

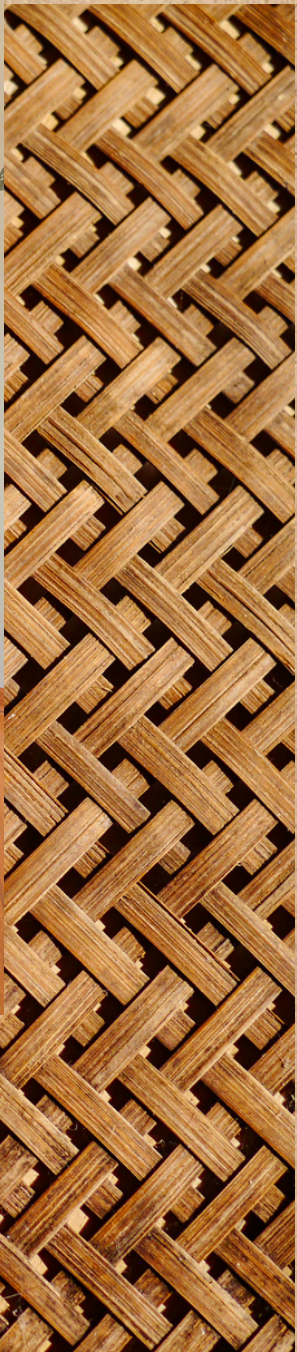


I	KITCHEN ELEVATION
AI	SCALE: 1/4" = 1'-0"

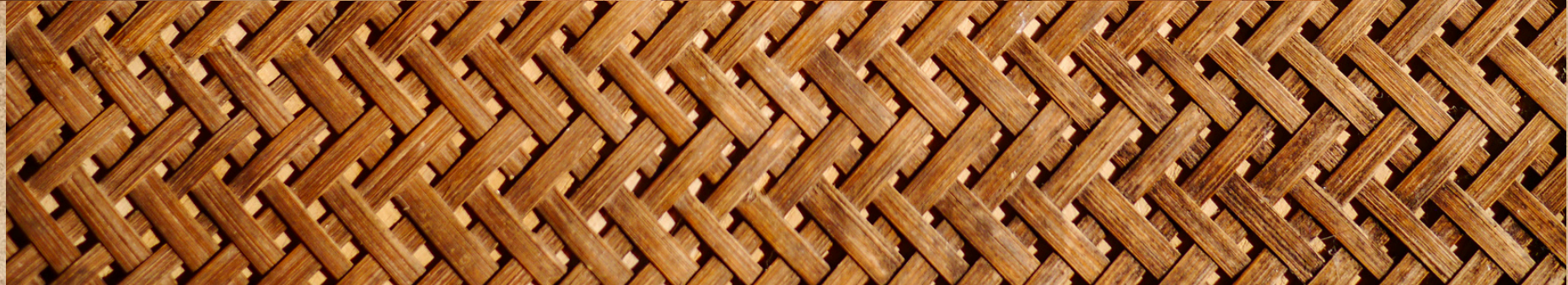
Kitchen Elevation

SCALE: 1/4" = 1' - 0"

The kitchen intends to feel traditional, with natural textures dominating the space.



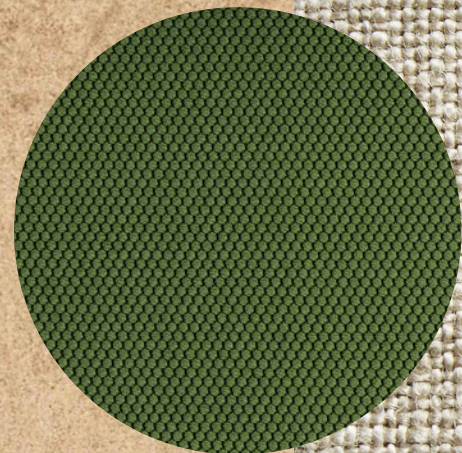
Kitchen



Living Room



Green couch is a must!





Bedroom

bee Lab





Garden



The home ransitions from a greenhouse style space to the exterior traditional garden area.





Study



Courtesy of MyArchitectAI





Preliminary Sketches

