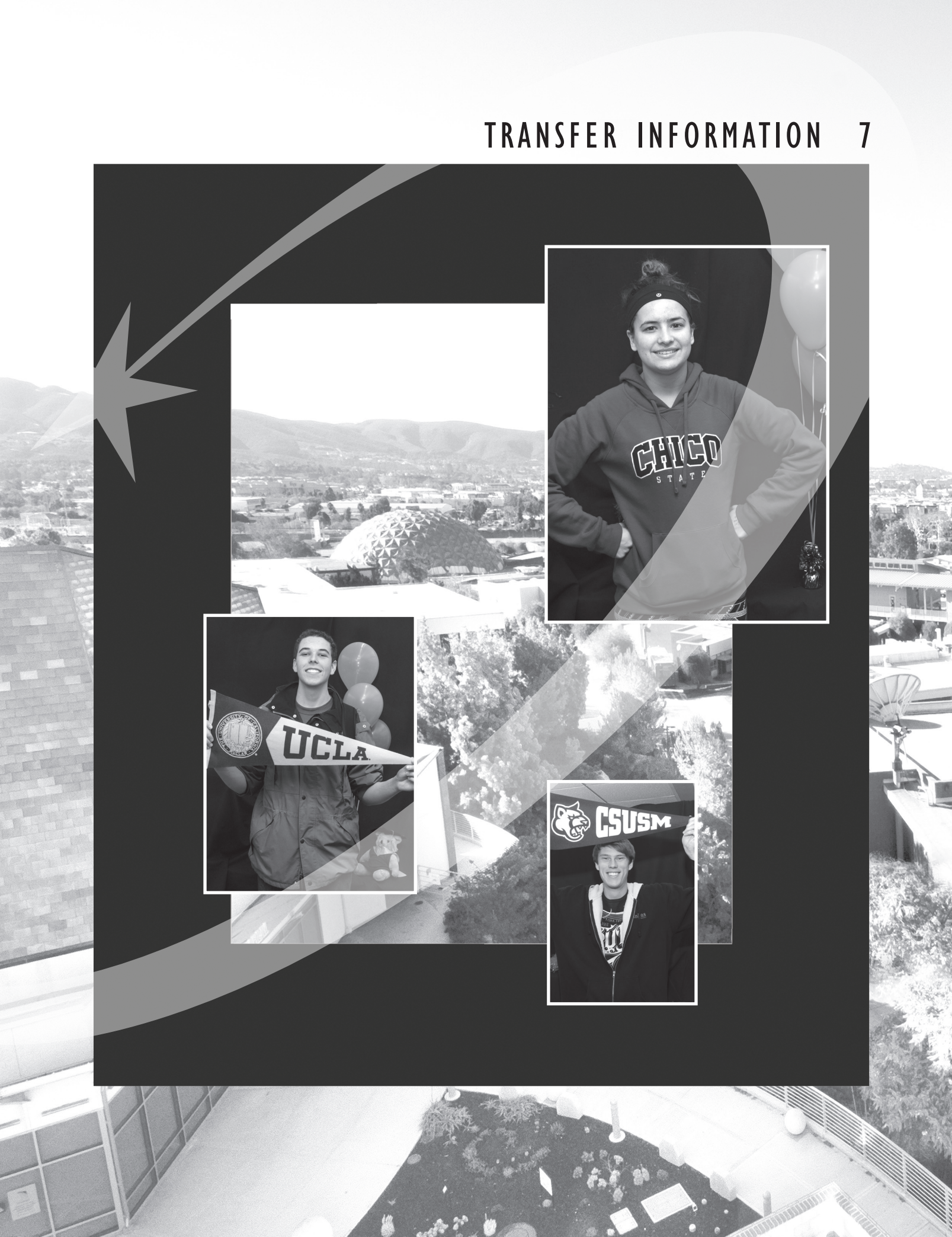
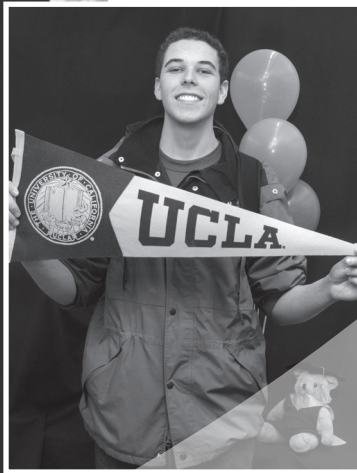
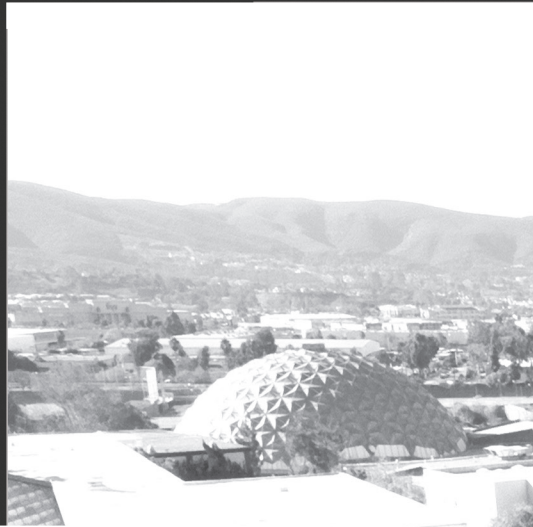


TRANSFER INFORMATION 7



Section 7

Transfer Information -

Associate Degree for Transfer Requirements
General Education Transfer Pattern Requirements
CSU System Information
UC System Information

California Community Colleges are now offering Associate Degrees for Transfer to the CSU. These may include Associate in Arts for Transfer (AA-T) or Associate in Science for Transfer (AS-T) degrees. These degrees are designated to provide a clear pathway to a CSU major and baccalaureate degree. California Community College students who are awarded an AA-T or AS-T degree are granted admission with junior standing somewhere in the CSU System and given priority admission consideration to their local CSU campus or to a program that is deemed similar to their community college major. This priority does not guarantee admission to specific majors or campuses.

Students who have been awarded an AA-T or AS-T are able to complete their remaining requirements for the 120-unit baccalaureate degree within 60 semester or 90 quarter units.

To view the most current list of Palomar College Associate Degrees for Transfer and to find out which CSU campuses accept each degree, go to <http://www.sb1440.org/Counseling.aspx>. Major requirements are listed under the corresponding discipline in Section 8. Current and prospective community college students are encouraged to meet with a counselor to review their options for transfer and to develop an educational plan that best meets their goals and needs.

Associate Degree for Transfer Requirements

I. Minimum Units

The Associate degree for transfer requires completion of a minimum of sixty (60) CSU-transferable semester units. Courses numbered 1-99 do not count in the sixty (60) units toward the degree. (See the Course Numbering System and Transfer Identification listing.)

II. Grade Point Average (GPA)

Maintain a cumulative grade point average of 2.0 ('C' average) or higher for all CSU-transferable course work attempted.

III. Residency

Complete a minimum of twelve (12) semester units in residence as an officially enrolled student at Palomar College.

IV. Major

Complete a minimum of 18 semester units in an "AA-T" or "AS-T" major as detailed in Section 7 of the catalog. All courses in the major must be completed with a grade of C or better (Title 5, 55063). Although courses in the major may be taken for Pass/No Pass grading, it is not recommended.

V. District Requirements

Students following Associate Degrees for Transfer (AA-T or AS-T) are not held to Palomar College District Requirements.

VI. General Education Requirements

Certified completion of the California State University General Education Breadth (CSU GE Breadth) pattern OR the Intersegmental General Education Transfer Curriculum (IGETC-CSU) pattern is required. Refer to the CSU GE or IGETC Requirements listings in this section or see a counselor for more information.

VII. Transfer Model Curriculum Reciprocity

- For those students who come to Palomar College having already begun an AA-T or AS-T at another college in a particular area of study and having already completed courses as stipulated by that college for that AA-T or AS-T, Palomar will accept any courses listed on the TMC, even if they are different from those stipulated by Palomar College.
- For those students who begin their AA-T or AS-T at Palomar College, Palomar will accept only those courses stipulated by Palomar College for the AA-T or AS-T.
 - For the two-year period following a department's official introduction of its AA-T or AS-T, the Articulation Officer will consult with the department when any issue arises about the acceptance of a course outside of those courses stipulated by the department.

Additional Degree Information

Catalog Rights and Continuous Enrollment Criteria

Eligibility for graduation is determined by catalog rights and continuous enrollment. Students who do not wish to use the catalog in effect at the time they began continuous enrollment should indicate which catalog they wish to use; otherwise, the catalog under which they began continuous enrollment, or the current catalog, will be used.

Continuous enrollment is defined as attendance in one semester or two quarters (excluding summer) within a calendar year (January through December) in the CSU, UC, or California Community Colleges system following initial enrollment at Palomar. A student must have received a letter grade (including "W") in the semesters of attendance to maintain continuous enrollment. If a student does not maintain continuous enrollment, the evaluation will be based on the requirements in effect at the time of return to Palomar College, or the date the degree is awarded.

Notice of Intent to Graduate

When all requirements are completed or in progress, students should submit a Petition for Graduation to the Evaluations Office in the Student Services Center, room SSC-40. Petitions are available in the Counseling or Transfer Centers, the Evaluations Office, or online. Deadlines are strictly adhered to; petitions must be submitted no later than the dates listed below.

Spring graduation – February 28th

Summer graduation – June 30th

Fall graduation – September 30th

Conferring of Degrees

Associate in Arts for Transfer and Associate in Science for Transfer degrees will be conferred formally at the Commencement Ceremony held in May at the end of each spring semester. However, students will receive their degree following the close of the semester in which they apply for graduation.

Transfer Planning

Students planning to transfer to a four-year university have a wide variety of options. The California State University (CSU) with 23 campuses, the University of California (UC) with 9 campuses, and numerous private, independent colleges in California, as well as out-of-state universities, offer a broad range of academic programs, physical and academic environments, and social climates. Palomar College offers the equivalent of the first two years of these four-year college and university degrees. Students wishing to pursue any of these educational alternatives should meet with a counselor as early as possible to discuss their educational plan.

Successful transfer planning requires the following steps:

- Selecting an academic/career goal
- Selecting an appropriate major to meet your goal
- Selecting the most suitable college or university
- Developing and completing a course of study in preparation for transfer
- Completing the application process; **it is advisable to apply to more than one university**

Students are encouraged to take advantage of the resources and assistance available in the Transfer Center to successfully complete the steps listed above.

To prepare for transfer, students must decide which campus they will attend through research in the Transfer Center, located in the SSC Building, and consult a counselor for the specific requirements for that particular campus and to create an educational plan. All colleges and universities have specific admission requirements, and may have course and unit requirements as well as minimum grade point averages that must be met prior to transfer. Four-year colleges and universities require students to complete specific general education requirements and major preparation requirements. Students should complete as many of these requirements as possible before they transfer. Palomar College maintains articulation agreements with many colleges and universities which list courses that satisfy general education requirements and lower division major preparation for transfer. For more detailed information, go to www.palomar.edu/counseling/transfercenter.

California State University General Education (CSUGE) Requirements

The following is a General Education pattern which will meet all lower-division General Education requirements at any CSU campus.

Minimum Units

A minimum of 39 semester units is required for full certification of lower-division general education requirements.

Grade Point Average

A minimum of 2.00 ('C' average) is required.

Advanced Placement (AP) Program

Palomar College will accept AP exams toward fulfillment of CSU GE requirements. Please refer to the AP Exam Chart in Section 5 of the catalog for acceptable general education scores and placement. Please see a counselor for AP acceptance toward major preparation and units toward transfer.

College Level Examination Program (CLEP)

Palomar College will accept some CLEP exams toward fulfillment of CSU GE requirements. Please refer to the CLEP Exam Chart in Section 5 of the catalog for acceptable general education scores and placement. Please see a counselor for CLEP acceptance toward major preparation and units toward transfer.

Foreign Course Work

Palomar College will not include foreign course work on the GE certification. Due to the varying policies in the acceptance of foreign transcripts, the determination regarding their use is left to the transfer institution.

International Baccalaureate (IB) Program

Palomar College will accept some IB exams toward fulfillment of CSU GE requirements. Please refer to the IB Exam Chart in Section 5 of the catalog for acceptable general education scores and placement. Please see a counselor for IB acceptance toward major preparation and units toward transfer.

Petition for Certification

Upon enrollment in final requirements, students should submit a Petition for Graduation/Transfer Certification form to the Evaluations Office in the Student Services Center, room SSC-40. To be eligible for certification, 12 of the required 39 semester units must be completed at Palomar College.

GE Course Effective Dates

Dates in parentheses (Fxx) following a course indicate the approval of the course for an area. Courses taken prior to date indicated would not be acceptable for meeting a general education requirement.

AREA A: ENGLISH LANGUAGE COMMUNICATION AND CRITICAL THINKING

9 units – one course required from each group below. Minimum grade of 'C' required.

A1. Oral Communication

Speech 100

A2. Written Communication

English 100

A3. Critical Thinking

English 202, 203

Philosophy 113, 116, 200

Reading 120 (F04)

Speech 105

AREA B: SCIENTIFIC INQUIRY AND QUANTITATIVE REASONING

9 units – one course required from each group below. A lab course must be taken in either group 1 or 2.

B1. Physical Science

Astronomy 100, 105L, 120

Chemistry 100, 104, 105 (F91), 110, 110L, 115, 115L,

205 (F07), 210 (F92), 220 (F91), 221 (F91)

Earth Sciences 100, 100L, 115

Geography 100, 100L, 110, 115 (F98), 125

Geology 100, 100L, 110, 120, 125, 150, 150L

Oceanography 100, 100L

Physical Science 100, 100L, 101, 101L

Physics 101, 102, 120, 121 (F91), 200, 201, 230, 231 (F91),

232 (F91)

B2. Life Science

Anthropology 100, 100L, 101
 Biology 100, 101, 101L, 102, 105, 106, 110, 114 (F98),
 114L (F98), 118 (F93), 118L (F98), 130, 131, 131L,
 135 (F09), 200, 201
 Botany 100, 101, 101L
 Microbiology 200
 Psychology 210
 Zoology 100, 101, 101L, 120, 135 (F09), 145, 145L (F93),
200, 203 (F93)

B3. Laboratory Activity

This requirement may be met by the completion of any lab course above in B-1 or B-2. The lab must be a prerequisite or corequisite to the lecture course. Lab only courses are identified with an 'L' and courses with labs included are underlined.

B4. Mathematics/Quantitative Reasoning

(Minimum grade of 'C' required)

Math 100, 105, 106 (F98), 110, 115, 120, 130, 135, 140,
 141 (F98), 200 (F92), 205 (F98), 206 (F98), 245 (F07)
 Psychology 205
 Sociology 205

AREA C: ARTS AND HUMANITIES

9 units – three courses required, with at least one in Arts and one in Humanities.

C1. Arts (Arts, Cinema, Dance, Music, Theatre)

American Indian Studies 104, 105, 135, 146
 Architecture 120 (F95), 121 (F99), 155 (F07)
 Art 100, 102, 104, 105, 163 (F96), 164 (F96), 165, 166, 169
 Cinema 100, 102, 103, 110, 120, 122,
 Dance 100, 101, 102, 105
 Fashion 130
 Graphic Communications 101, 115
 Interior Design 115 (F09), 120 (F09)
 Multicultural Studies 115, 157
 Music 100, 101, 102, 103, 170, 171 (F96)
 Photography 125
 Digital Broadcast Arts 100
 Theatre Arts 100, 140, 141, 150, 157

C2. Humanities (Literature, Philosophy, Languages other than English)

Africana Studies 115
 American Indian Studies 100, 108A, 108B, 145, 150, 153, 154,
 166A, 166B, 167A, 167B, 207A, 207B, 266A, 266B
 American Sign Language 100 (F91), 101 (F91), 110 (F91),
 205 (F91), 206 (F91)
 American Studies 100, 105, 121
 Anthropology 135, 155
 Arabic 101, 101A (F06), 101B (F06), 102, 102A (F06),
 102B (F06), 201, 201A (F06), 201B (F06)
 Chicano Studies 100, 105, 110, 155
 Chinese 101, 102, 201
 Cinema 123
 English 205, 210, 211, 215, 220, 221, 225, 226, 230, 240, 245,
 250, 255, 260, 265, 270 (F91), 280, 290
 English as a Second Language 101, 102, 103

Foreign Language 108A, 108B, 207A, 207B
 French 101, 102, 201, 202
 German 101, 102, 201, 202
 Graphic Communications 102
 History 101, 102, 105, 106, 107, 108, 160 (F15)
 Humanities 100, 101
 Italian 101, 102, 201
 Japanese 101, 102, 130, 201 (F97), 202 (F97)
 Judaic Studies 106
 Multicultural Studies 120, 124, 125
 Philosophy 111, 114, 121, 122, 125, 126, 140 (F91), 141 (F91),
 250
 Religious Studies 101, 104, 105, 106, 108, 110, 124
 Spanish 101, 101A, 101B, 102, 102A, 102B, 201, 201A, 201B,
 202, 211, 212, 235 (F14)

AREA D: SOCIAL SCIENCES

9 units – three courses required from at least two disciplines.
 Cross listed courses may be counted only once.

Administration of Justice 100
 Africana Studies 100, 101, 102, 120, 125, 126 (F96)
 American Indian Studies 101, 102, 110 (F91), 115 (F91), 120,
 125, 130, 140, 165 (F96)
 American Studies 104, 110, 200 (F95), 121
 Anthropology 105, 107, 110, 115, 125, 126 (F96), 130, 137, 140
 Chicano Studies 101, 102, 125 (F91)
 Child Development 100, 110, 115
 Communications 100, 105
 Economics 100, 101, 102, 110, 115, 120, 125
 English 150
 Family and Consumer Sciences 101
 Fashion 132 (F98)
 Geography 103, 105
 Graphic Communications-Multimedia and Web 100 (F09)
 History 101, 102, 105, 106 (F15) 107, 108, 121 (F07), 130, 140, 141,
 150 (F94), 151 (F94), 160
 Judaic Studies 107
 Legal Studies 121 (F15)
 Multicultural Studies 100, 110, 125, 165, 200 (F95)
 Political Science 100, 101, 102, 110
 Psychology 100, 105 (F05), 110, 120, 130 (F95), 225 (F07),
 235 (F07)
 Religious Studies 102, 107, 108
 Sociology 100, 105 (F05), 110, 115, 130, 135, 165, 200 (F95)
 Speech 120, 131 (F97)

AREA E: LIFELONG LEARNING AND SELF-DEVELOPMENT

3 units – complete one course.

Alcohol and Other Drug Studies 150 (F08)
 Biology 185
 Business 136 (F15)
 Child Development 100 (F05)
 CSIS-Information Technology 105
 Counseling 110, 115, 120 (F02), 148
 Family and Consumer Sciences 105, 136 (F15), 150
 (F98-X15), 165, 185 (F91-X15)
 Health 100, 165
 Nutrition 120, 165, 185
 Psychology 105, 115, 125, 145 (F90), 150 (F08)
 Reading 110 (F91)

Sociology 105, 125, 130, 145 (F90), 150 (F08)

Speech 115

*Military Service

*The CSU Chancellor's Office will accept a minimum of 3 units of ACE recommended credit for certification of Area E. Refer to the Associate Degree District Requirements, under Health and Kinesiology, or see a Counselor, for more information.

CSU GRADUATION REQUIREMENT IN U.S. HISTORY, CONSTITUTION AND AMERICAN IDEALS

All CSU campuses require completion of this requirement.

Complete one or two Palomar courses (or an equivalent) or one AP/CLEP exam from each of the three US components listed below. Courses listed in more than one area can meet multiple components (e.g. HIST 102 meets both US-1 and US-3). Minimum exam scores are listed with each approved exam

US-1: The historical development of American institutions and ideals

Africana Studies 102

American Indian Studies 101

American Indian Studies 102

Chicano Studies 101, 102

History 101

History 102

History 140

History 141

Religious Studies 102

Political Science 101+102 (together meet US-1)

AP Exam (Score of 3): U.S. History

CLEP (Score of 50): History of the U.S. I

CLEP (Score of 50): History of the U.S. II

US-2: The Constitution of the United States and the operation of representative democratic government under that Constitution

Political Science 101

Political Science 102

Africana Studies 101+102 (together meet US-2)

American Indian Studies 101+102 (together meet US-2)

Chicano Studies 101

History 101+102 (together meet US-2)

History 140+141 (together meet US-2)

AP Exam (Score of 3): U.S. Government & Politics

US-3: The process of California state and local government

Africana Studies 102

American Indian Studies 102

Chicano Studies 102

History 102

History 141

Political Science 102

Political Science 120 (F09)

Students who have completed course work outside California should consult with a counselor to ensure completion of the three required components.

Intersegmental General Education Transfer Curriculum (IGETC) Requirements - UC/CSU

Please read before following the IGETC

The IGETC is a general education pattern which will meet all lower-division general education requirements at all CSU or most UC campuses.

It should be noted that completion of the IGETC is not a requirement for admission to CSU or UC, nor is it the only way to fulfill the lower-division general education requirements of the CSU or UC prior to transfer. Depending upon a student's major and field of interest, the student may find it advantageous to fulfill the CSU general education requirements, or those of the UC campus or college to which the student plans to transfer. Some colleges within the UC system will not accept IGETC. **It is strongly recommended that students consult with a counselor to determine which general education pattern is the most appropriate for them.**

Rules for using the IGETC pattern

1. Upon enrollment in final requirements, the student must submit a Petition for Graduation/Transfer Certification form to the Evaluations Office.
2. All IGETC courses must be completed with a grade of 'C' or better. A 'C-' is not acceptable.
3. UC transfers need not complete the Oral Communication requirement (Area I, Group C).
4. CSU transfers need not complete the Language Other Than English requirement. It is recommended that CSU transfers complete the U.S. History, Constitution, and American Ideals requirement prior to transfer.
5. Some UC transferable courses have credit limitations. Specific limitations are indicated with the course descriptions in the PC Catalog or available on the assist website at <http://www.assist.org>.
6. Some UC campuses may not allow use of the IGETC for students who were previously enrolled at a UC campus. See your counselor for these restrictions.
7. Palomar can certify coursework completed at other California Community Colleges provided that it appears on their IGETC course list. Coursework completed at other colleges and universities may be included with approval from PC faculty and the Evaluations Office. CLEP credit or foreign coursework will not be included on the IGETC certification.
8. Advanced Placement (AP) exams can be used to satisfy many course requirements on IGETC. Please refer to the AP Exam Chart on the Articulation website (www.palomar.edu/articulation/) for acceptable scores and placement. See a counselor for AP acceptance toward major prep and units toward transfer. Credit will be given for only one course per area.
9. International Baccalaureate (IB) exams can be used to satisfy many course requirements on IGETC. Please refer to the IB Exam Chart on the Articulation website (www.palomar.edu/articulation/) for acceptable scores and placement. See a counselor for IB acceptance toward major prep and units toward transfer. Credit will be given for only one course per area.

10. If transferring to a UC, a high school transcript demonstrating 2 years of the same foreign language with a final grade of 'C' or better will satisfy Area 6. An official high school transcript must be on file with the Records Office.
11. Students wishing to use a course to meet an IGETC requirement must be sure that the course is on the approved list during the academic year in which it is taken. Refer to the statement and semester approval lists following the IGETC pattern.
12. For partial IGETC certification information, make an appointment with a counselor through the Counseling Center.

GE Course Effective Dates

Dates in parentheses (Fxx) following a course indicate the approval of the course for an area. Courses taken prior to date indicated would not be acceptable for meeting a general education requirement.

AREA 1: ENGLISH COMMUNICATION

CSU: 3 courses, 9 semester units;

UC: 2 courses, 6 semester units

1 course each from groups A and B

IA: English Composition

(1 course, 3 semester units)

English 100

IB: Critical Thinking-English Composition

1 course, 3 semester units

English 202, 203

Philosophy 200 (F92)

IC: Oral Communication – CSU requirement only

1 course, 3 semester units

Speech 100

AREA 2: MATHEMATICAL CONCEPTS AND QUANTITATIVE REASONING

1 course, 3 semester units

Mathematics 110, 120, 130, 135, 140, 141, 200 (F92), 205, 206, 245 (F07)

Psychology 205 (F96)

Sociology 205 (F96)

AREA 3: ARTS AND HUMANITIES

3 courses, 9 semester units

Three courses required, with at least one from Arts and one from Humanities.

3A. Arts Courses

American Indian Studies 104, 105, 135, 146

Architecture 120 (F07), 121 (F07)

Art 100, 163 (F96), 164 (F96), 165, 166, 167, 168

Cinema 100, 102, 103, 110, 120 (F95), 122

Dance 100, 101, 102, 105

Graphic Communications 115

Multicultural Studies 115

Music 100, 101, 102, 170 (F92), 171 (F96)

Photography 125

Theatre Arts 100, 140, 141, 150

3B. Humanities Courses

Africana Studies 115

American Indian Studies 100, 145, 150, 167A, 167B, 266A, 266B

American Studies 100, 105

Anthropology 135, 155

Arabic 201, 201A (F06), 201B (F06)

Chicano Studies 100, 105, 110, 155

Chinese 201 (F01)

Cinema 123

English 205, 210, 211, 215, 220, 221, 225, 226, 230, 240, 245, 250, 255, 260, 265, 270 (F93), 280 (F93), 290

French 201 (F97), 202 (F97)

German 201 (F97), 202 (F97)

Graphic Communications 102

History 101, 102 (F15) 105, 106, 107, 108

Humanities 100, 101

Italian 201 (F01)

Japanese 130, 201 (F97), 202 (F97)

Judaic Studies 106

Multicultural Studies 120, 124, 125

Philosophy 111, 114, 121, 122, 125, 126, 140, 141

Religious Studies 101, 104, 105, 106, 108, 110, 124

Spanish 201 (F97), 201A (F08), 201B (F08), 202 (F97), 212, 235 (F14)

AREA 4: SOCIAL AND BEHAVIORAL SCIENCES

3 courses, 9 semester units

Three courses required from at least two disciplines. Cross listed courses may be counted only once.

Administration of Justice 100 (F92)

Africana Studies 100, 101, 102, 120, 125, 126 (F96)

American Indian Studies 101, 102, 110, 115, 120, 125, 130, 140, 165 (F96)

American Studies 110, 200 (F95)

Anthropology 105, 107, 110, 115, 125, 126 (F96), 130, 140

Chicano Studies 101, 102, 125 (F93)

Child Development 100

Communications 100 (F92), 105 (F92)

Economics 100, 101, 102, 110, 115, 120, 125

English 150

Geography 103, 105

Graphic Communications-Multimedia & Web 100 (F10)

History 101, 102, 105, 106, 107, 108, 121 (F07), 130, 140, 141, 150 (F95), 151 (F95)

Judaic Studies 107

Legal Studies 121 (F15)

Multicultural Studies 100, 110, 125 (F93), 165 (F93), 200 (F95)

Political Science 100, 101, 102, 110

Psychology 100, 105 (F05), 110, 120, 125, 130 (F08), 225 (F07), 235 (F07)

Religious Studies 102, 107, 108

Sociology 100, 105 (F05), 110, 115, 125, 130, 135, 165, 200 (F95)

Speech 120 (F93)

AREA 5: PHYSICAL AND BIOLOGICAL SCIENCES

2 courses, 7-9 semester units

Two courses required - one Physical Science and one Biological Science course. A lab course must be taken in either group A or B.

5A. Physical Science Courses

Astronomy 100, 105L, 120

Chemistry 100, 104, 105, 110, 110L, 115, 115L, 205 (F07), 210 (F92), 220, 221

Earth Science 100, 100L, 115

Geography 100, 100L, 110 (F92), 115 (F98), 125 (F08)
 Geology 100, 100L, 120, 125 (F08), 150, 150L
 Oceanography 100, 100L
 Physical Science 100, 100L
 Physics 101 (F99), 102, 120, 121, 200, 201, 230, 231, 232

5B. Biological Science Courses

Anthropology 100, 100L, 101
 Biology 100, 101, 101L, 102 (F93), 105, 106, 110, 114 (F98),
 114L (F00), 118 (F93), 118L (F98), 130, 131, 131L, 135 (F09),
200, 201
 Botany 100, 101, 101L
 Microbiology 200
 Psychology 210
 Zoology 100, 101, 101L, 120, 135 (F09), 145 (F92), 145L (F93),
200, 203 (F93)

5C. Laboratory Activity

This requirement may be met by the completion of any lab course above in 5A or 5B. The lab must be a prerequisite or corequisite to the lecture course. Lab only courses are identified with an 'L' and courses with labs included are underlined.

AREA 6: LANGUAGE OTHER THAN ENGLISH –

UC requirement only

Satisfy one of the following:

1. Proficiency equivalent to two years of high school study in the same language with a grade of 'C' or better.
2. One of the following courses, completed with a grade of 'C' or better: American Indian Studies 167A, 167B; American Sign Language 100 (F02), Arabic 101, 101B (F06), Chinese 101, French 101, German 101, Italian 101 (F97), Japanese 101, Spanish 101, 101B
3. Any Palomar College foreign language course beyond the elementary level.

CSU GRADUATION REQUIREMENT IN U.S. HISTORY, CONSTITUTION AND AMERICAN IDEALS

- Not part of IGETC; may be completed prior to transfer.
- Complete one or two Palomar courses (or an equivalent) or one AP/CLEP exam from each of the three US components, listed below. Courses listed in more than one area can meet multiple components (e.g. HIST 102 meets both US-I and US-3). Minimum exam scores are listed with each approved exam.

US-1: The historical development of American institutions and ideals

Africana Studies 102
 American Indian Studies 101
 American Indian Studies 102
 Chicano Studies 101, 102
 History 101
 History 102
 History 140
 History 141
 Religious Studies 102 [F08]
 Political Science 101+102 (together meet US-1)
 AP Exam (Score of 3): U.S. History
 CLEP (Score of 50): History of the U.S. I
 CLEP (Score of 50): History of the U.S. II

US-2: The Constitution of the United States and the operation of representative democratic government under that Constitution

Political Science 101
 Political Science 102
 Africana Studies 101+102 (together meet US-2)
 American Indian Studies 101+102 (together meet US-2)
 Chicano Studies 101
 History 101+102 (together meet US-2)
 History 140+141 (together meet US-2)
 AP Exam (Score of 3): U.S. Government & Politics

US-3: The process of California state and local government

Africana Studies 102
 American Indian Studies 102
 Chicano Studies 102
 History 102
 History 141
 Political Science 102
 Political Science 120 [F09]

Students who have completed course work outside California should consult with a counselor to ensure completion of the three required components.

IGETC EFFECTIVE DATES

The IGETC program began in Fall 1991. Course work completed prior to that term may be used for IGETC if it appeared on the 1991-92 IGETC course list. All courses taken in Fall 1991 or later must be on the approved IGETC list at the time they were taken. Courses added to the IGETC list are listed below with their approval date. It is important for students to have an updated list each year while at the community college.

Fall 1992 Additions:

AJ 100; BIOL 131L; BOT 115; CHEM 210; COMM 100, 105; ENG 202, 203; FREN 220, 225, 230; GEOG 110; MATH 200; MUS 170; PHIL 115; RUSS 220; ZOO 120, 145

Fall 1993 Additions:

BIOL 102, 118; CS 125; ENG 270, 280; MATH 150; MCS 165; SPCH 120; ZOO 145L, 203

Fall 1994 Additions:

No additions

Fall 1995 Additions:

AMS 200; CINE 120; HIST 150, 151; MCS 200; SOC 200

Fall 1996 Additions:

AIS 165; AS 126; ANTH 126; ART 163, 164; HIST 107, 108; MUS 171; OCN 101; PSYC 205; SOC 205

Fall 1997 Additions:

FREN 201, 210; GERM 201, 210; ITAL 101; JAPN 201, 210; LAT 201, 210; RUSS 201, 210; SPAN 201, 210

Fall 1998 Additions:

BIOL 107, 114, 118L; CHEM 102; DNCE 101; GEOG 115; HIST 109, 114; PHYS 115

Fall 1999 Additions:

AMS 110; MCS 110; OCN 115; PHSC 100L; PHYS 110; TAG 101

Fall 2000 Additions:

BIOL 114L

Fall 2001 Additions:

CHIN 130, 201; ITAL 201; TAG 201

Fall 2002 Additions:

ASL 100; CINE 102, 103; PHYS 101, 102, 200, 201

Fall 2003 Additions:

ANTH 100L; ENG 290

Fall 2004 Additions:

ENG 265

Fall 2005 Additions:

ANTH 125; GEOG 103; HIST 152; PSYC/SOC 105

Fall 2006 Additions

ANTH 101; ARAB 101B, 201A, 201B; DNCE 102, MCS 122

Fall 2007 Additions:

AMS 105; CHEM 104; CS 130, 135; MCS 120, 124; TA 150

Fall 2008 Additions:

BIOL 215; CHEM 205, 205L; CINE 122; DT 120, 121; HIST 121, 135; JS 106, 107; MATH 245; PHIL 103; PSYC 225, 235; RS 102, 103, 106, 107, 124; SOC 130

Fall 2009 Additions:

AIS 104; ANTH 107, 145; CHIN 201A, 201B; GC 102, GEOG/GEO 125; ITAL 201A; PSYC 130; RS 108; SPAN 201A, 201B; SPCH 125

Fall 2010 Additions:

BIOL/ZOO 135

Fall 2011 Additions:

GC 110; GCMW 100; SOC 135

Fall 2012 Additions:

ECON 120; GC 115; MCS 115, 125

Fall 2013 Additions:

ARAB 101; ART 163, 164; CINE 123

Fall 2014 Additions:

AIS 146, 167A, 167B; ECON 125; PHIL 111, 121, 122; RS 104; SOC 165; SPAN 212, 235

Fall 2015 Additions:

AIS 266A, 266B; ES 100L; JAPN 130

The California State University (CSU) System

The California System of State Universities and Colleges provides upper-division educational programs for California Community College transfer students.

Palomar College students wishing to transfer to a California State University may choose from the following campuses:

Bakersfield (Q)	California Maritime Academy (S)
Cal Poly, Pomona (Q)	Cal Poly, San Luis Obispo (Q)
Channel Islands (S)	Chico (S)
Dominguez Hills (Q)	Fresno (S)
Fullerton (S)	East Bay (Q)
Humboldt (S)	Long Beach (S)
Los Angeles (Q)	Monterey Bay (S)
Northridge (S)	Sacramento (S)

San Bernardino (Q)	San Diego (S)
San Francisco (S)	San Jose (S)
San Marcos (S)	Sonoma (S)
Stanislaus (4-1-4)	

S = Semester system; Q = Quarter system

Students planning to transfer to a California State University should plan a program to meet the admissions and graduation requirements of the specific institution that they plan to attend. **Due to budget constraints, the CSU System will have reduced enrollment spaces for new students. See a counselor to inquire about individual campus requirements.**

Upper Division Transfer Admission Requirements

Minimum eligibility requirements for admission include the following, but may not be competitive for all campuses and/or majors:

1. Have a college grade point average of 2.0 or better (2.4 for non-California residents) in all transferable college units completed.
2. Are in good standing at the last college or university attended, i.e., you are eligible to re-enroll.
3. Have completed or will complete prior to transfer at least 30 semester units (45 quarter units) of courses which include English Composition, Oral Communication, Critical Thinking, and Mathematics, with grades of 'C' or better in each course.
4. Have a total of 60 CSU transferable units.

Please be advised that these are minimum entrance requirements, and that they do not guarantee admission to any of the 23 CSU campuses. Many CSU campuses are currently requiring completion of all general education courses, as well as completion of all lower division major preparatory course work offered at the community college you are attending. GPA requirements will vary with the applicant pool. **Prospective transfer students are urged to make an appointment with a counselor to begin their transfer planning early.**

Application Filing Periods

All California State Universities use a common admission process. Some campuses require supplemental application materials. Students must apply online at www.csumentor.edu. Most campuses will acknowledge receiving your application within two to four weeks.

Fall Semester or Quarter	October 1
Summer Semester or Quarter	February 1
Winter Quarter	June 1
Spring Semester or Quarter	August 1

NOTE: Filing an application on time, correctly, and completing the required follow-up steps can make the difference between being accepted or not.

General Education/Breadth Options

All campuses of the CSU system require a minimum of 48 semester units of general education. Thirty-nine of these units may be taken at community colleges. Students may fulfill the lower division general education requirements prior to transfer by completing one of the following three options:

1. The California State University General Education Certification pattern which will fulfill the lower division general education/breadth requirements for all CSU campuses.

2. The Intersegmental General Education Transfer Curriculum which will fulfill the lower division general education/ breadth requirements for all CSU and most UC campuses.
3. The specific lower division general education/breadth requirements of the campus to which they intend to transfer.

The CSU GE and IGETC transfer certification patterns are listed above under Transfer Planning. Students should consult a Palomar College counselor to determine which option is best suited for their educational objective.

General Education Certification

Certification is a legal agreement between CSU and community colleges in California to assure that CSU lower division general education requirements have been satisfied.

Upon student request the Evaluations Office at Palomar College will provide certification of appropriate general education course work. Official transcripts from other colleges and universities, Advanced Placement exams, and International Baccalaureate exams must be on file before submitting the petition, and will be reviewed for inclusion in the certification process.

The University of California (UC) System

The University of California is an integral part of the public education system of California. The campuses of the University of California are located in:

Berkeley (S)	Davis (Q)
Irvine (Q)	Los Angeles (Q)
Merced (S) *	Riverside (Q)
Santa Barbara (Q)	Santa Cruz (Q)
San Diego (Q)	San Francisco (Q) +

S = Semester system; Q = Quarter system
+ San Francisco is primarily for graduate-level medical studies

Each campus of the University of California accepts course work from the California Community Colleges system designated as UC transferable at full unit value. Students intending to transfer to the university will find it advantageous to complete their lower division requirements at Palomar College. To prepare for transfer, students must decide which college they will attend through research in the Transfer Center, SSC Building, and consult a counselor for the specific requirements for that particular campus and to create a written educational plan.

Upper Division Transfer Admission Requirements

Minimum eligibility requirements for admission include the following, but may not be competitive for all campuses and/or majors.

1. Complete 60 semester (90 quarter) units of transferable college credit with a grade point average of at least 2.4 (2.8 or higher for non-resident students).
2. Complete the following course pattern, earning a grade of 'C' or better in each course:
 - a) Two transferable college courses in English composition
 - b) One transferable college course in mathematical concepts and quantitative reasoning

- c) Four transferable college courses chosen from at least two of the following subject areas: the arts and humanities, the social and behavioral sciences, and the physical and biological sciences.

Application Filing Periods

The University of California system includes nine campuses. All campuses, except for the San Francisco Medical School, follow similar entrance requirements and use a common application form. However, individual campuses may impose additional entrance criteria for impacted majors and programs. Consult the university catalog, a member of the Palomar College counseling staff, or <http://www.assist.org> for specific information. Applications may be accessed at <http://www.universityofcalifornia.edu>.

Berkeley and Merced:	
Fall Semester	Nov. 1 – 30
All other campuses:	
Fall Quarter	Nov. 1 – 30
Winter Quarter	July 1 – 31
Spring Quarter	Oct. 1 – 31

NOTE: Courses approved for IGETC will meet these admissions requirements for the University of California.

Students may transfer up to 70 UC transferable community college units to the UC. A minimum 2.4 GPA is required for admission, but most of the UC campuses use a 3.0 or higher GPA depending upon the major.

Detailed information on how to make up missing high school subjects is available in the Counseling and Transfer Centers. A complete listing of all Palomar courses which transfer to the UC campuses is available at <http://www.assist.org>.

General Education/Breadth Options

Each school and college at every UC campus has its own general education/breadth requirements. Students may fulfill the lower division general education/breadth requirements at any UC campus by completing one of the following two options:

1. The Intersegmental General Education Transfer Curriculum (IGETC) which will fulfill the lower division general education breadth requirements for all UC and CSU campuses.*
2. The specific lower division general education/breadth requirements of the campus to which they intend to transfer.

The IGETC transfer certification pattern is listed above under Transfer Planning and is also listed on the Assist website at <http://www.assist.org>. Students should consult a Palomar College counselor to determine which option is best suited for their educational objective.

* Use of the IGETC to satisfy lower-division General Education requirements is either not allowed under some circumstances or not recommended for some majors. Consult a counselor regarding these restrictions.

General Education Certification

Certification is a legal agreement between UC and community colleges in California to assure that UC lower division general education requirements have been satisfied.

The entire pattern must be completed prior to transfer. Upon enrollment in final requirements, the student should submit a Petition for Graduation/Transfer Certification form, along with the Advising Guide (signed by a Counselor) to the Evaluations Office. Official transcripts from other colleges and universities, Advanced Placement exams, and International Baccalaureate exams must be on file before submitting the petition, and will be reviewed for inclusion in the certification process.

Transfer Admission Guarantee Programs

Palomar College has transfer admission guarantee programs with seven campuses of the University of California. All of these agreements guarantee admission into the university and some guarantee admission into the major.

Each Transfer Admission Guarantee program varies in regard to eligibility, terms of transfer, minimum grade point average (GPA), etc. Visit the Transfer Center or the Transfer Center web page at <http://www.palomar.edu/counseling/transfercenter> for additional updated information.

The following is a list of UC campuses with which Palomar College has admission guarantee programs. These Transfer Admission Guarantee programs are referred to as TAGs.

University of California, Davis (UCD)

Palomar College participates in a TAG program with UC Davis, which guarantees admission to the university and to most majors.

University of California, Irvine (UCI)

Palomar College participates in a TAG program with UC Irvine, which guarantees admission to the university and to most majors.

University of California, Merced (UCM)

Palomar College participates in a TAG program with UC Merced, which guarantees admission to the university and to all majors.

University of California, Riverside (UCR)

Palomar College participates in a TAG program with UC Riverside, which guarantees admission to the university and all majors.

University of California, San Diego (UCSD)**University Link Program**

Graduating high school seniors are eligible for this program which promotes preparation for guaranteed admission to UCSD. This program links Palomar students with counselors from Palomar and UC San Diego. Contact the Counseling Center for additional information. This program is also available for veteran students.

University of California, Santa Barbara (UCSB)

Palomar College participates in a TAG program with UC Santa Barbara, which guarantees admission to the university; however, not a guarantee into the major.

University of California, Santa Cruz (UCSC)

Palomar College participates in a TAG program with UC Santa Cruz, which guarantees admission to the university; however, not a guarantee into the major.

Independent California Colleges and Universities

There are more than 75 fully-accredited independent colleges and universities currently affiliated with the Association of Independent California Colleges and Universities (AICCU) providing a host of options at undergraduate, graduate, and professional levels for students planning to continue their education beyond Palomar College.

Admissions policies vary widely from one school to another, and virtually all institutions give full credit for general education courses and usually for courses designated for transfer by the community college. A good rule to follow for independent colleges as well as for out-of-state institutions is to expect full credit for courses which are parallel in scope and content to courses offered for credit to lower division "native" students at those institutions. Articulation agreements for many independent institutions are available in the Counseling Center.

Independent colleges are flexible in admission policies and in awarding credit. They invite interested students to make an appointment with their Office of Admissions in order to discuss transfer opportunities on a personal basis.

Financial aid may be a primary factor in considering attending an independent college. Most students cut the cost in half by attending the community college to complete the lower division course work and requirements. Information on financial aid and scholarships is available from the financial aid offices on independent college campuses as well as in the Financial Aid Office at Palomar College.

Students are advised to refer to the AICCU's web site at www.aiccu.edu.

Private and Out-of-State Universities

Palomar College offers courses similar to those offered in the lower division, or the first two years, of four-year colleges and universities. Since course requirements for graduation vary between colleges, it is to the student's advantage to choose the college or university to which he or she plans to transfer as early as possible.

Students are advised to complete the courses at Palomar College which best satisfy the lower division course requirements at that particular college or university to which he or she ultimately transfers. Lower division course requirements typically include a set of general education courses as well as a sequence of courses in the student's chosen major field of study.

Students are encouraged to meet with a counselor to develop an academic program best suited for their transfer institution and intended major. The Transfer and Counseling Centers maintain materials to assist students in their transfer planning.