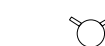

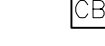
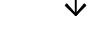




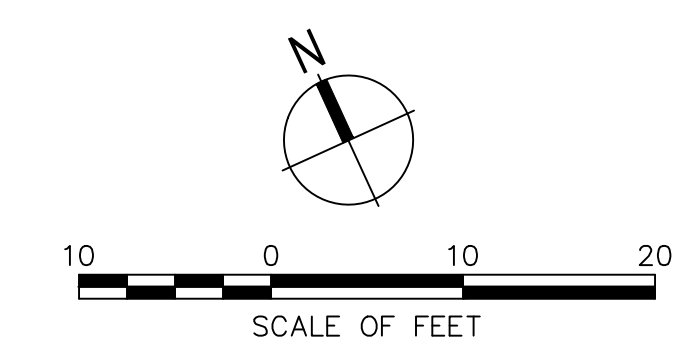
KEYNOTES

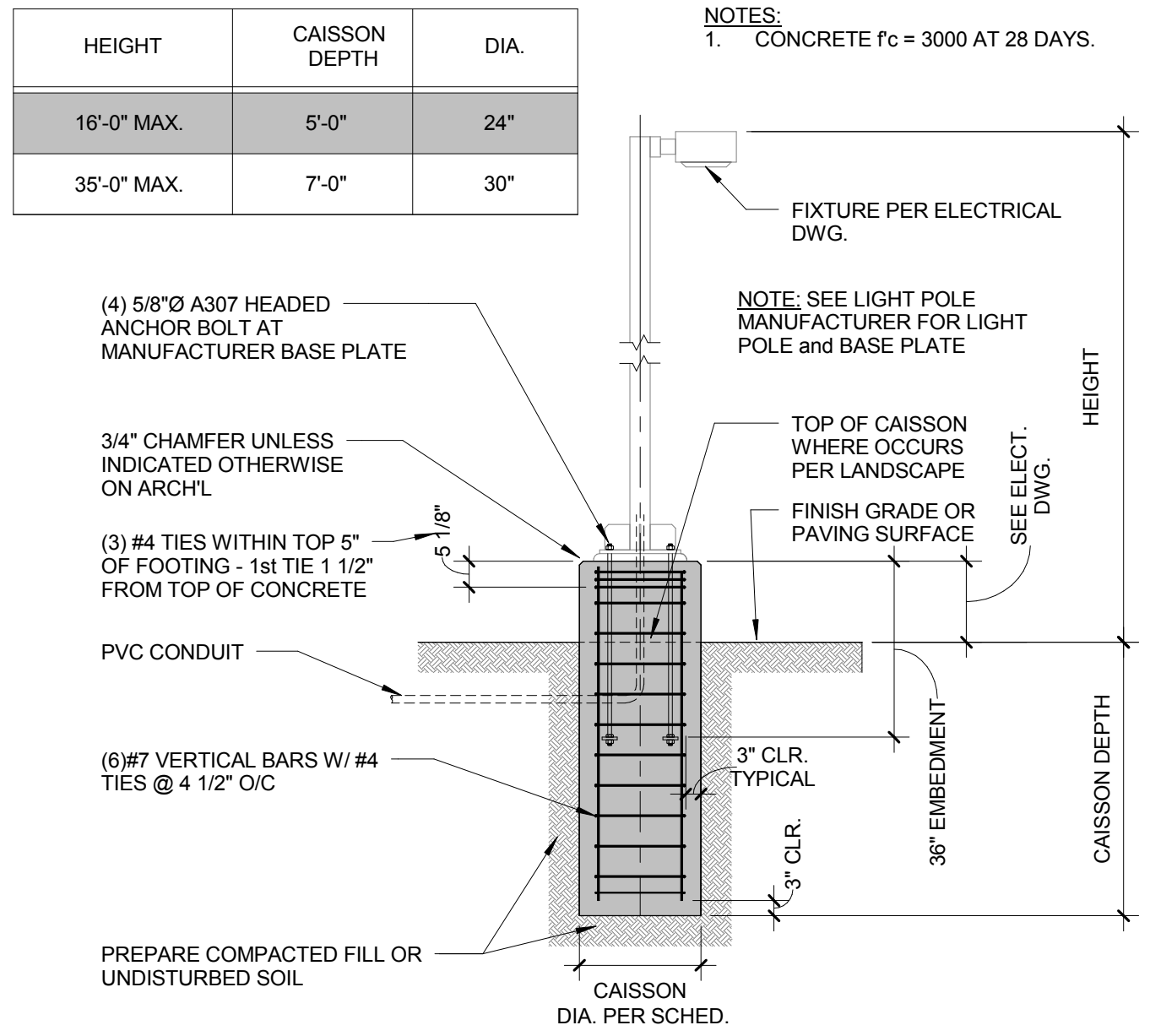
KEY NOTE	DESCRIPTION	DET/REF	COMMENT
1	EXISTING PAVING		PROTECT IN PLACE
2	EXISTING FENCE		PROTECT IN PLACE; THIS FENCE MAY BE REMOVED AT AN UNSPECIFIED TIME BY ANOTHER GC. IT IS THE RESPONSIBILITY OF THE GENERAL CONTRACTOR FOR THE LRC SIDEWALK CONNECTOR PROJECT TO FENCE THE ENTIRE AREA OF WORK FOR THIS PROJECT WITH AN 6" HIGH CHAIN LINK FENCE AND TO ADJUST THE LOCATION OF THE FENCE AS NEEDED DURING DIFFERENT PHASES OF THE WORK.
3	CONCRETE PAVING, TYPE 1	01/ A1.02	NATURAL GRAY/MEDIUM BROOM
4	A/C PAVING	PER CIVIL	
5	CONCRETE CURB / GUTTER	08/ A1.02	
6	NEW POLE LIGHT	12&13/ A1.02	OWNER FURNISHED, CONTRACTOR INSTALLED
7	RELOCATED ELECTRIC GATE AND MOTOR		OWNER FURNISHED, OWNER INSTALLED; SEE ELECTRICAL DRAWINGS FOR POWER
8	RELOCATED GATE CONTROL		OWNER FURNISHED, OWNER INSTALLED; SEE ELECTRICAL DRAWINGS FOR POWER
9	EXISTING CLASS II BASE		COVER THE EXISTING CLASS II BASE WITH 15 MIL VISQUEEN. OVERLAP VISQUEEN BY MINIMUM 18" AND TAPE. VISQUEEN SHALL EXTEND MINIMUM OF 24" AT BASE OF STOCKPILE IN ALL DIRECTIONS. INSTALL SANDBAGS ALONG THE TAPED OVERLAP AT MAXIMUM 36" O.C. AND INSTALL SANDBAGS COMPLETELY AROUND AT THE BASE OF STOCKPILE AT 24" O.C. MAXIMUM
10	EXISTING RAILROAD TIES		PROTECT IN PLACE

SITE SYMBOLS LEGEND

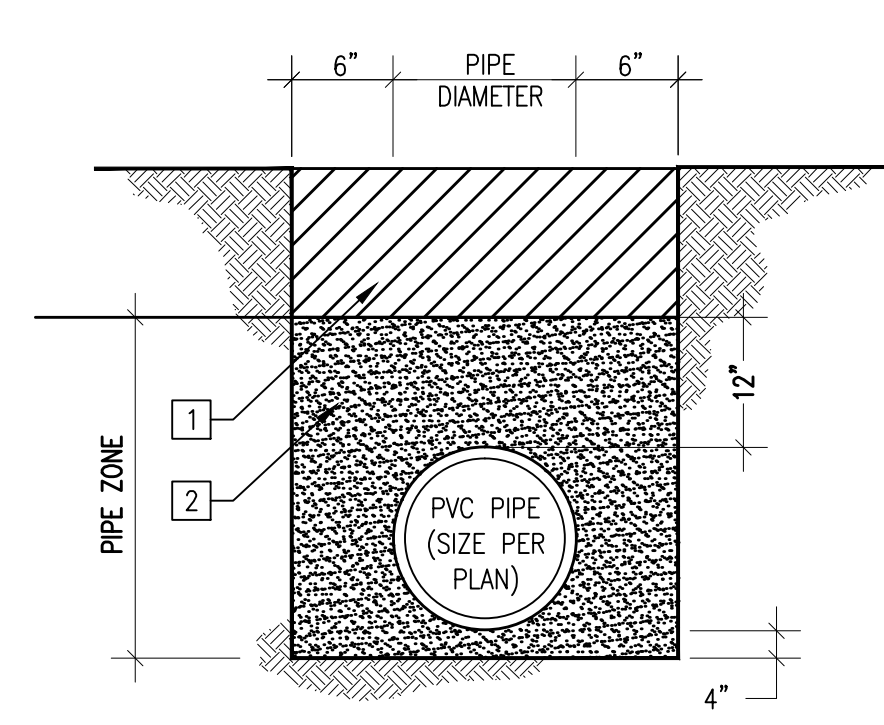
SYM.	DESC.	DET/REF	COMMENTS
	EXISTING FIRE HYDRANT		PROTECT IN PLACE
	MANHOLE		SEE CIVIL DRAWINGS
	CATCH BASIN		SEE CIVIL DRAWINGS
	ALIGN		
	PAVING JOINT	03/ A1.02	
	EXISTING POLE LIGHT		PROTECT IN PLACE

--- LIMIT OF WORK

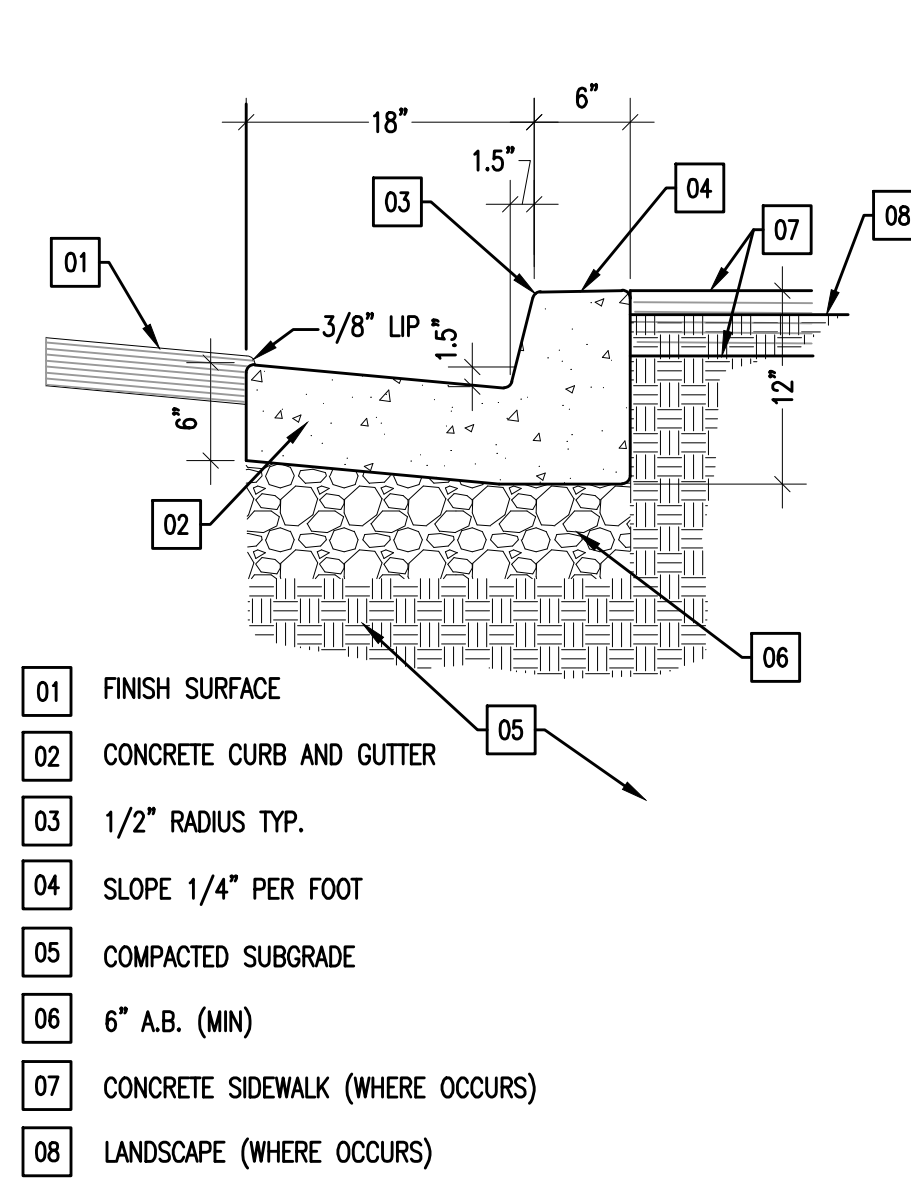




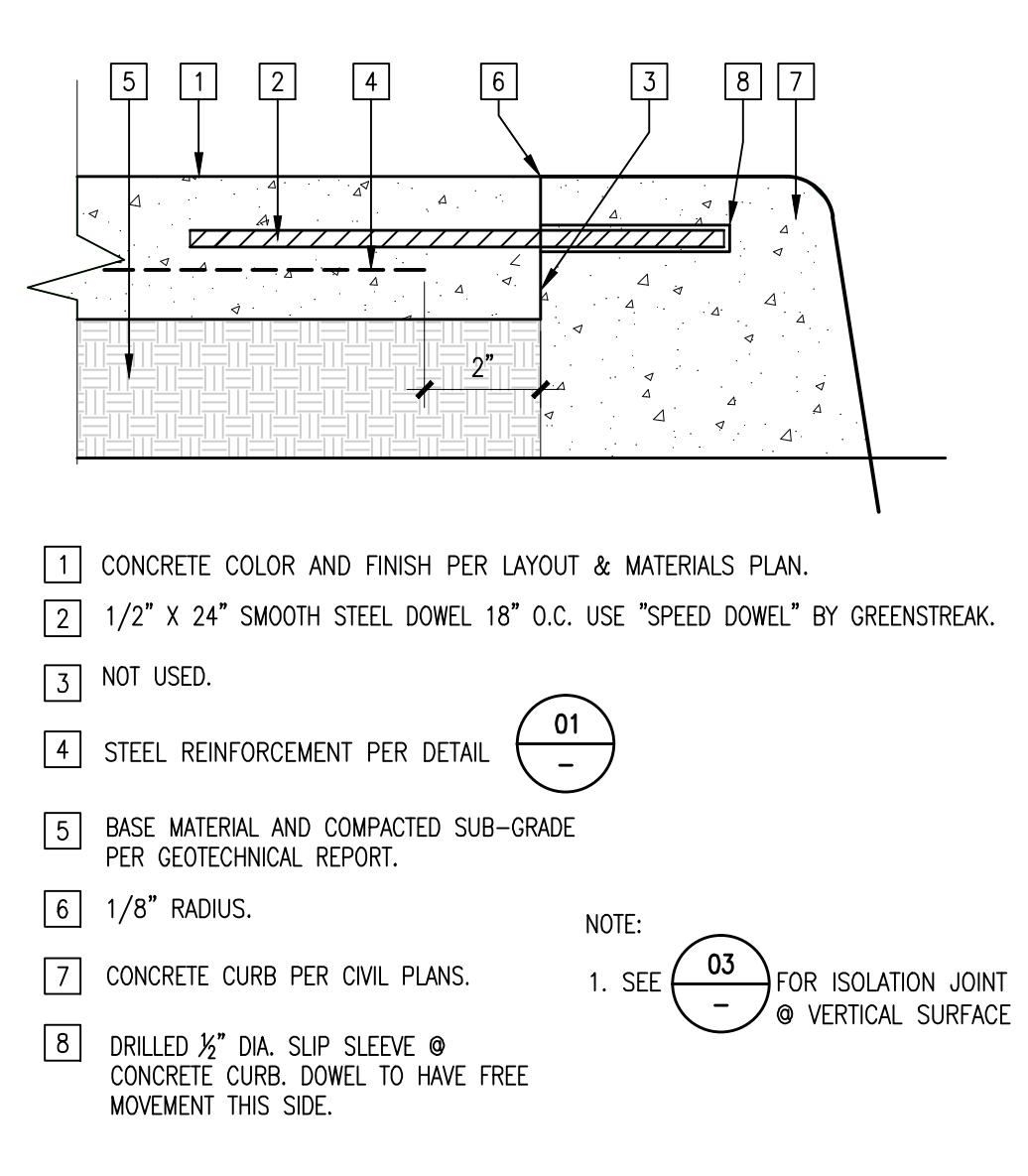
TYP. SITE LIGHT POLE DETAIL NTS 13



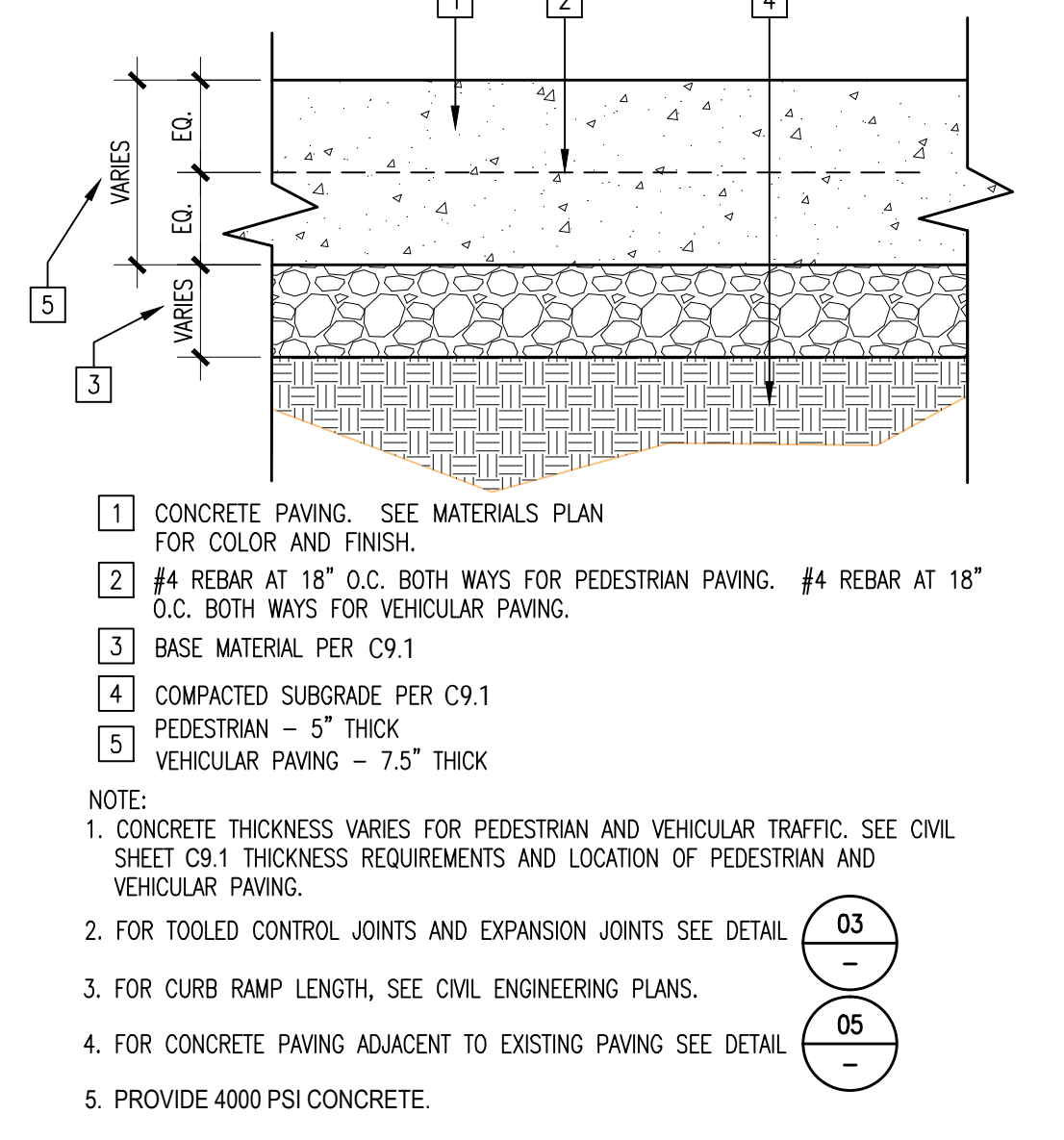
PIPE TRENCH DETAIL NTS 10



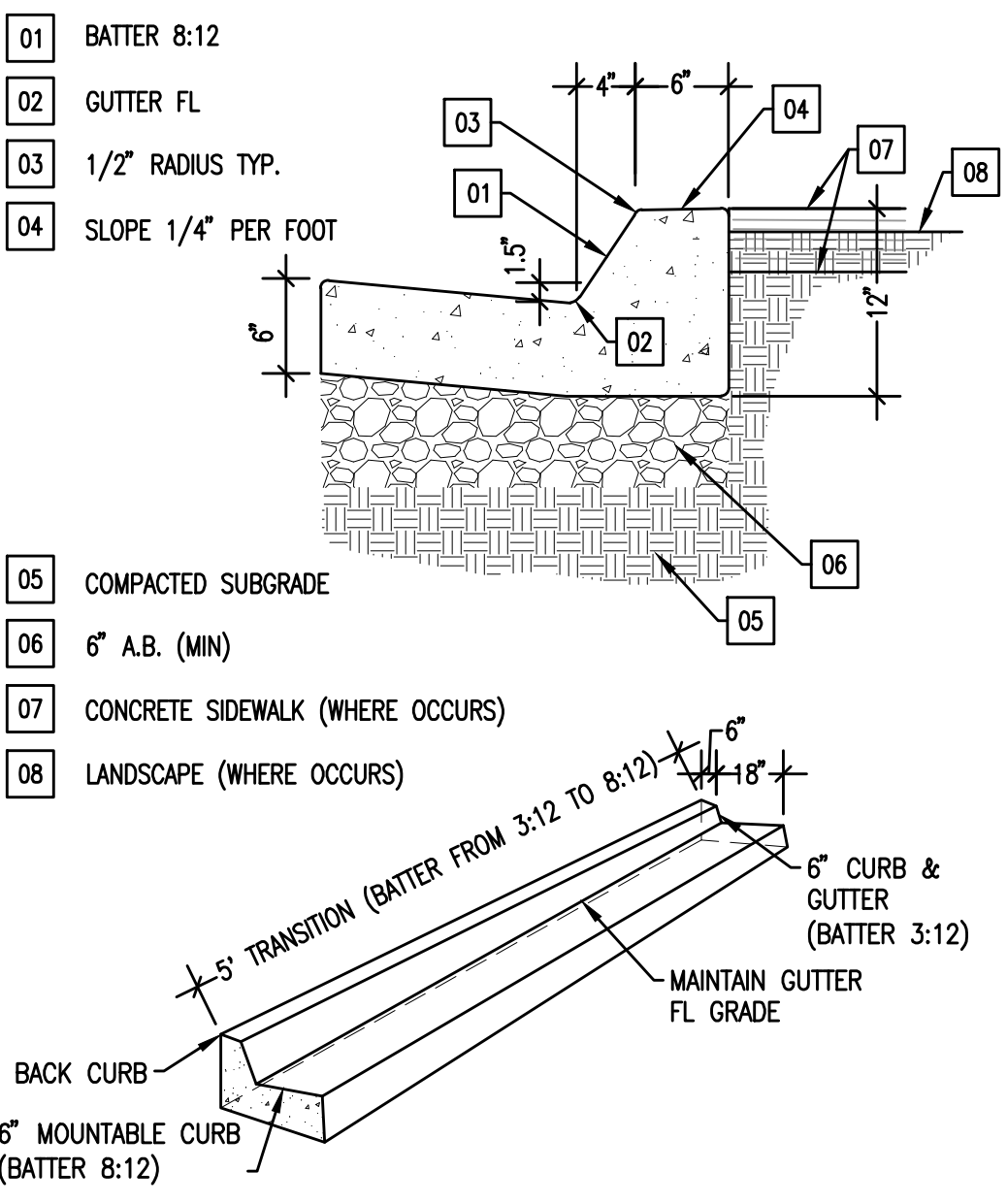
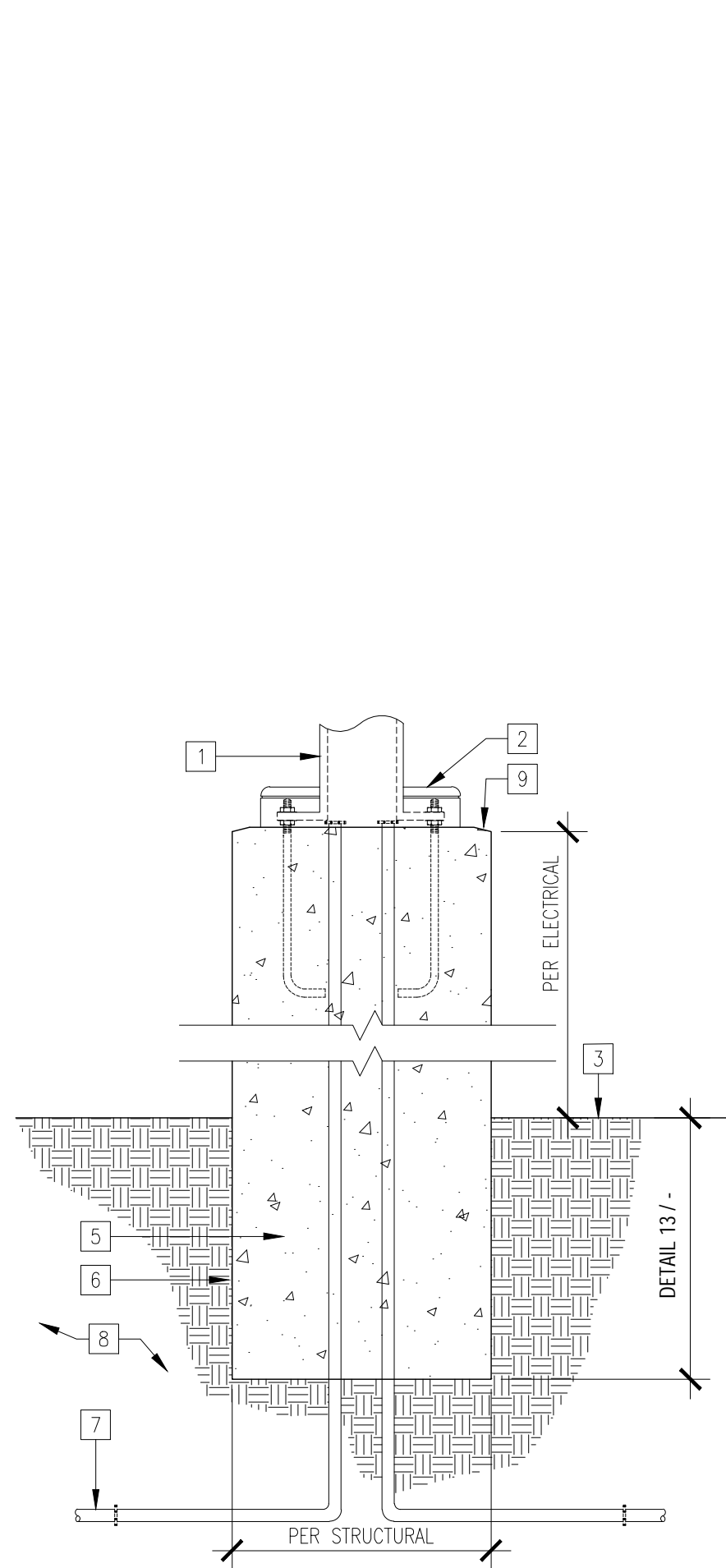
6" CURB AND GUTTER NTS 07



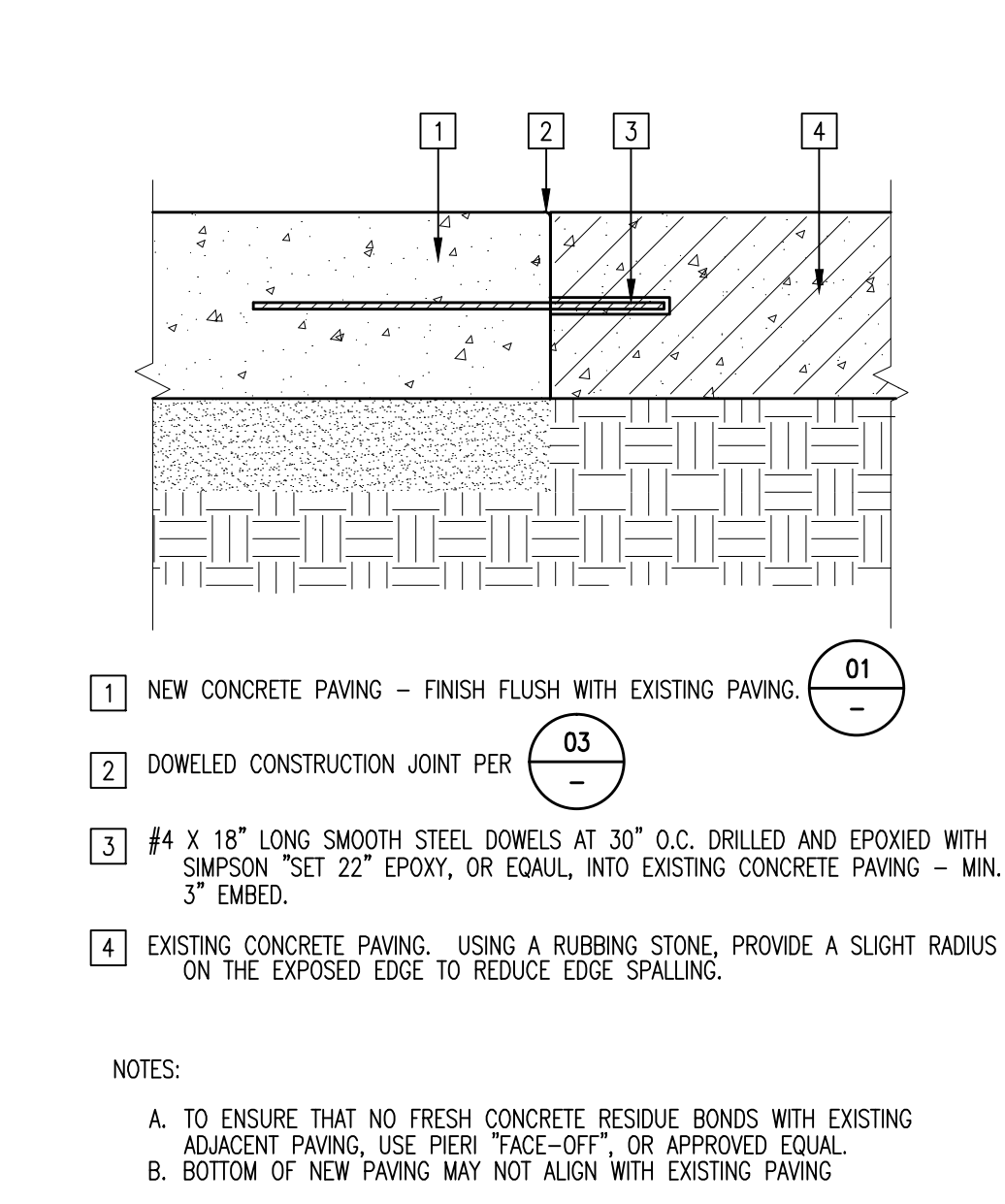
COLD JOINT AT CURB 3" x 1'-0" DT02PV40 04



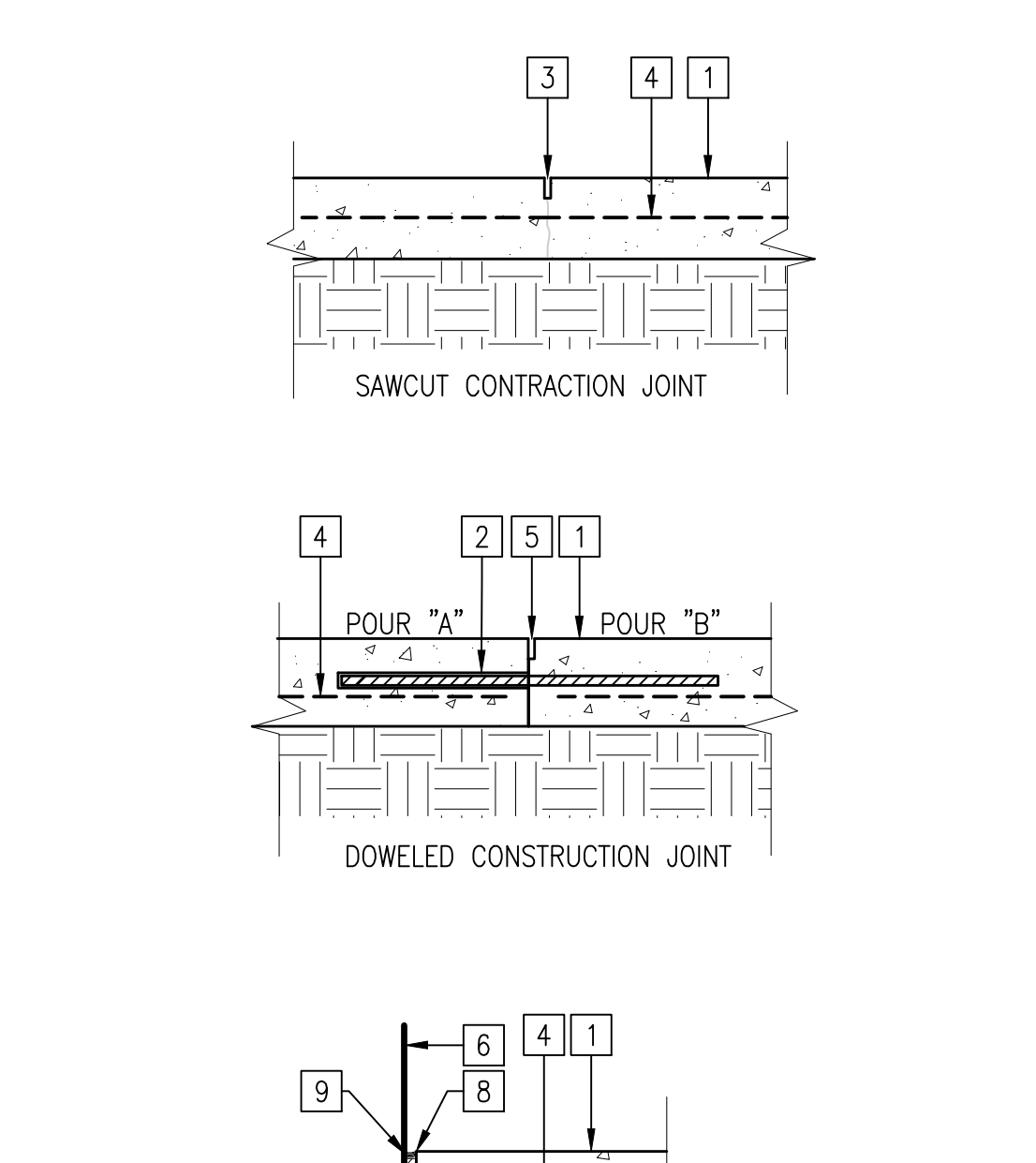
CONCRETE PAVING 3" x 1'-0" DT02PV10 01



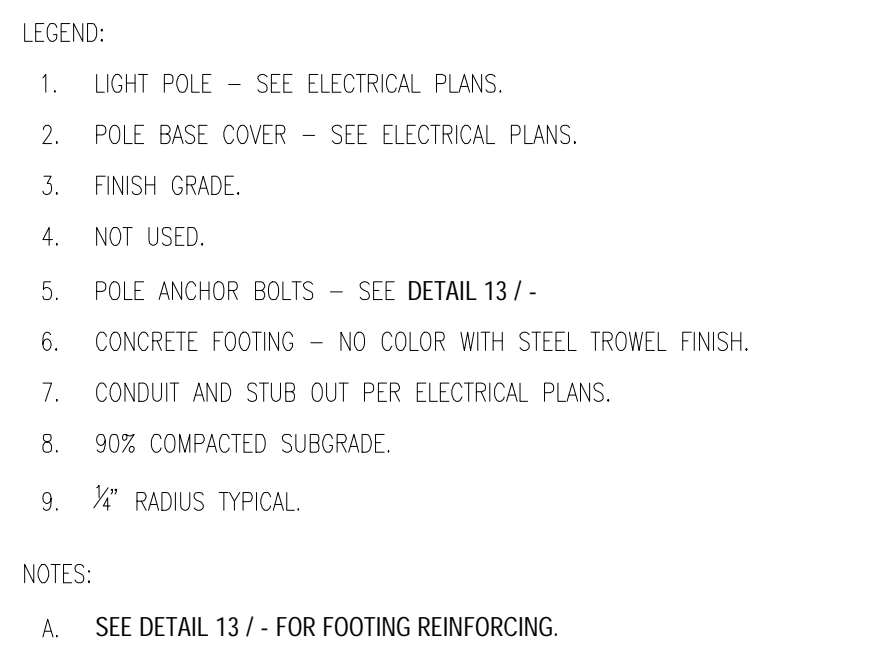
MOUNTABLE CURB TRANSITION NTS 08



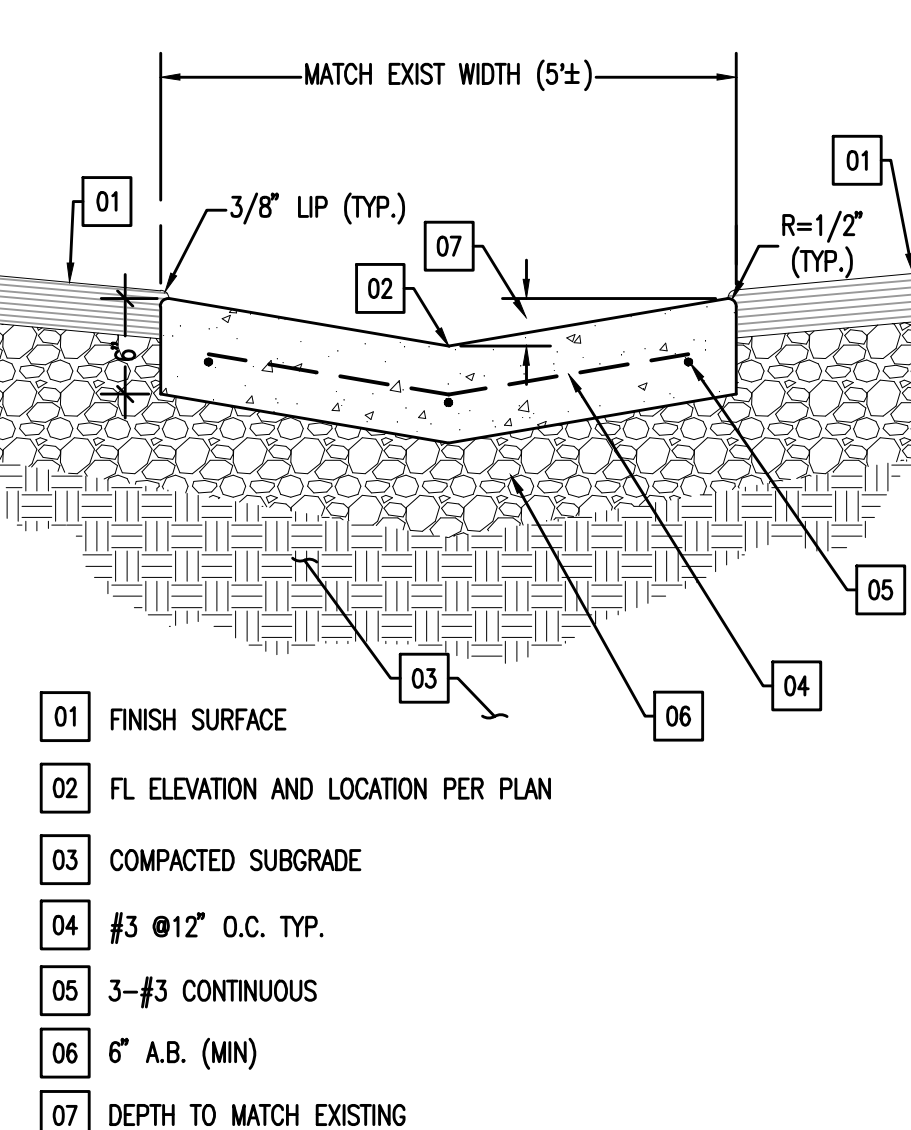
CONCRETE TIE-IN 3" x 1'-0" SAME 05



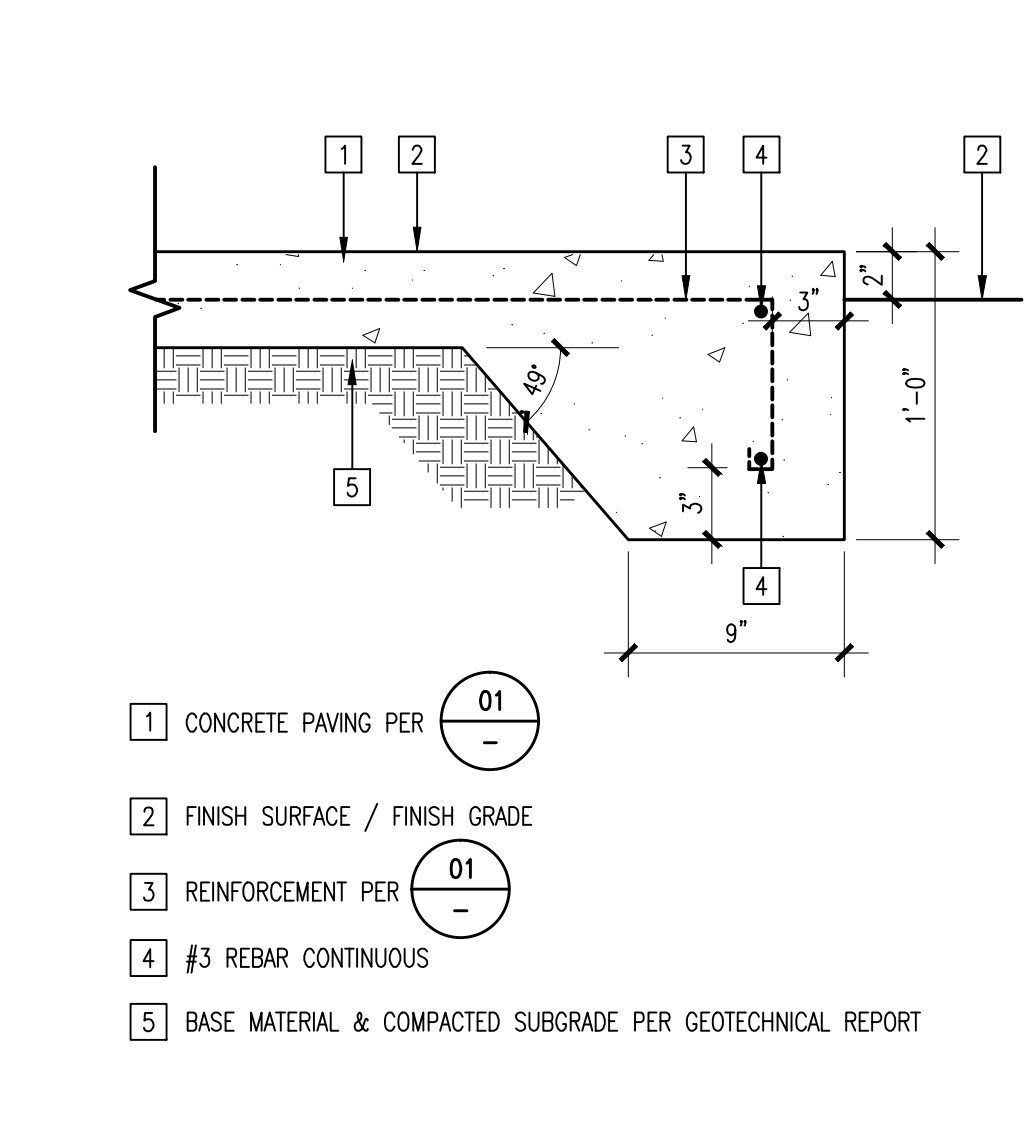
CONCRETE PAVING JOINTS 1.12" x 1'-0" SAME 03



LIGHT POLE FOOTING 1" x 1'-0" 12



VALLEY GUTTER NTS 09



THICKENED EDGE 1.12" x 1'-0" SAME 06

**Palomar College
Learning Resource Center
Sidewalk Connector Project**

Palomar Community College District
© Copyright 2014



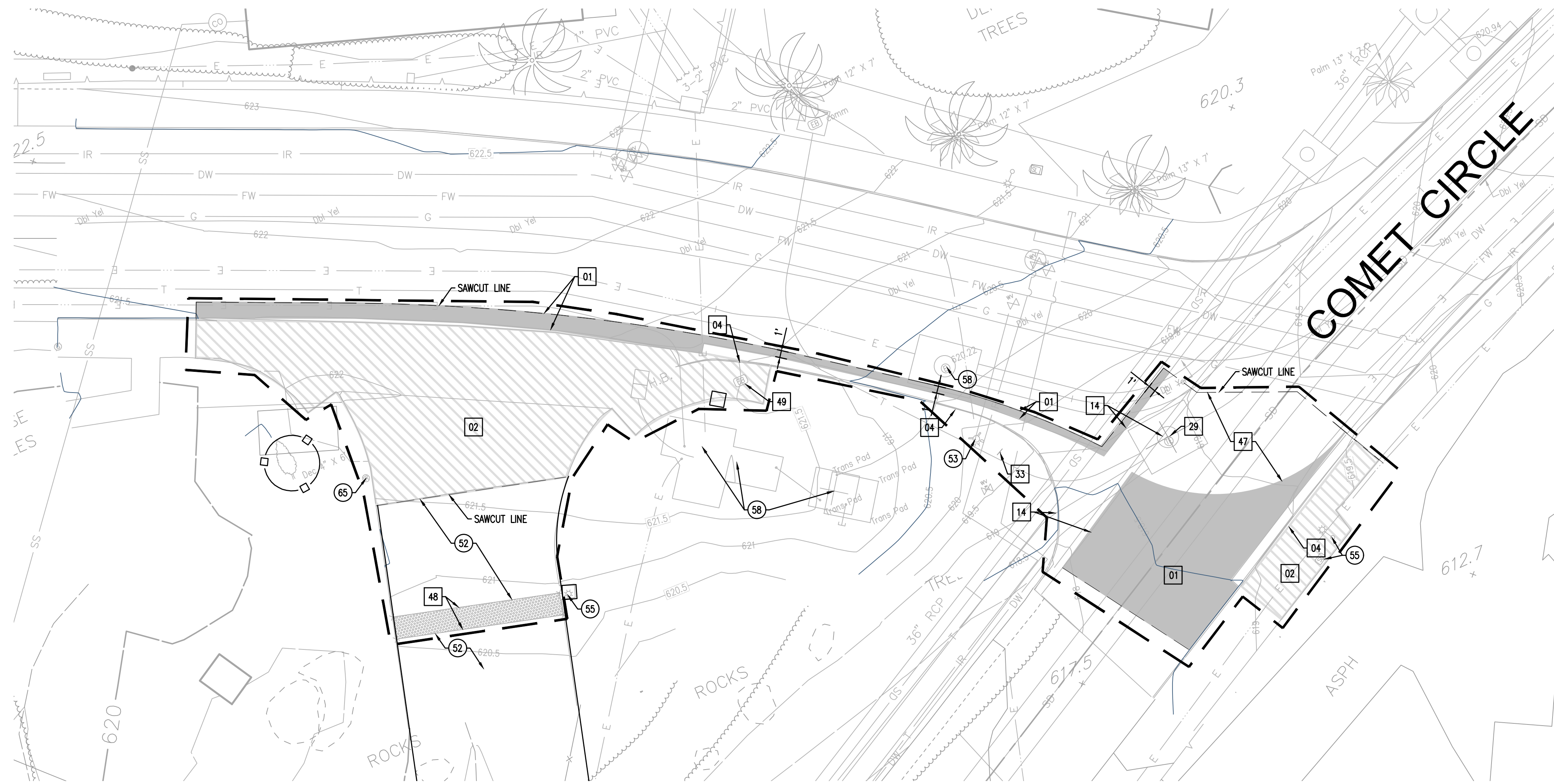
5161 California Avenue, Suite 100
Irvine, California 92617

BID PACKAGE

Submittal

C3.1

Job. No.	12049.10	Description	DEMOLITION PLAN
Reference			
Date	05-23-18		
Scale	1"=10'		



DEMOLITION LEGEND	
LABEL	DESCRIPTION
[01]	REMOVE (E) AC PAVEMENT
[02]	REMOVE (E) CONCRETE PAVEMENT/SIDEWALK/RAMP
(E)	TREE TO REMAIN AND BE PROTECTED, SEE DEMOLITION NOTE 3.

LEGEND	
---	LIMIT OF WORK
- - - -	SAWCUT LINE

DEMOLITION KEYNOTES	
KEY NOTE	DESCRIPTION
[01]	REMOVE (E) ASPHALT PAVEMENT.
[02]	REMOVE (E) CONCRETE PAVEMENT/SIDEWALK.
[04]	REMOVE (E) CONCRETE CURB AND GUTTER.
[14]	REMOVE (E) CONCRETE RIBBON GUTTER.
[29]	ADJUST (E) COMMUNICATION MANHOLE LID TO GRADE. SEE GRADING PLAN.
[33]	REMOVE (E) SIGN AND RETURN TO OWNER.
[47]	GRIND (E) AC PAVING (1/2" MIN).
[48]	REMOVE (E) TRUNCATED DOMES.
[49]	ADJUST (E) ELECTRICAL PULLBOX TO GRADE.

PROTECTION KEYNOTES	
KEY NOTE	DESCRIPTION
(52)	PROTECT (E) CONCRETE PAVEMENT/SIDEWALK.
(53)	PROTECT (E) FIRE HYDRANT.
(55)	PROTECT (E) LIGHT STANDARD.
(58)	PROTECT (E) ELECTRICAL FACILITIES.
(65)	PROTECT (E) WATER FACILITIES.

NOTE: IT IS THE CONTRACTOR'S RESPONSIBILITY TO PROVIDE BEST MANAGEMENT PRACTICES (BMP'S) FOR THE PROJECT CONSTRUCTION AREA, INCLUDING DRAIN INLET PROTECTION, EROSION CONTROL AND ANY OTHER BMP'S NECESSARY.



**Palomar College
Learning Resource Center
Sidewalk Connector Project**

Palomar Community College District
© Copyright 2014



5161 California Avenue, Suite 100
Irvine, California 92617

BID PACKAGE

Submittal

C4.1

Description
GRADING PLAN

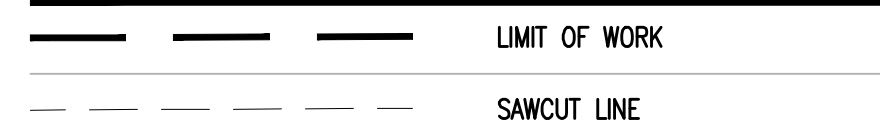
Job. No.	12049-10
Reference	
Date	05-23-18
Scale	1"=10'



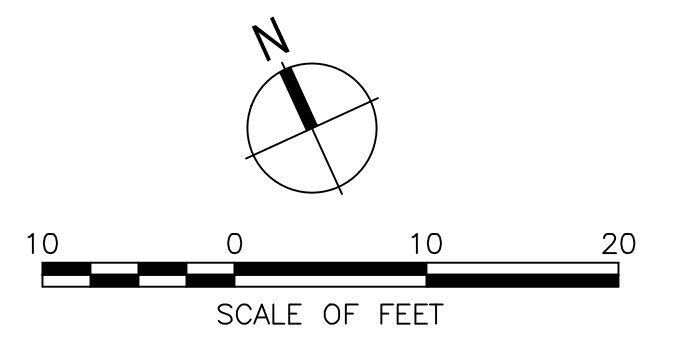
GRADING CONSTRUCTION NOTES:

- 01 CONSTRUCT 6" CURB AND GUTTER PER DETAIL 07, SHEET A1.02
- 03 PLACE 4" AC OVER 10" CLASS II CAB. SCARIFY UPPER 12" OF SUBGRADE. COMPACT SUBGRADE AND CAB TO 95% RELATIVE COMPACTION PER ASTM D 1557.
- 04 PLACE 5" THICK CONCRETE SIDEWALK/WALKWAY, FINISH AND COLOR PER DETAIL 01, SHEET A1.02.
- 05 PLACE 7.5" PCC OVER 4" CLASS II CAB. SCARIFY UPPER 12" OF SUBGRADE. COMPACT SUBGRADE AND CAB TO 95% RELATIVE COMPACTION PER ASTM D 1557. SEE DETAIL 01, SHEET A1.02.
- 11 CONSTRUCT THICKENED EDGE PER DETAIL 06, SHEET A1.02.
- 16 GRIND EXISTING AC (1/2" MIN) AND CONSTRUCT AC OVERLAY.
- 29 ADJUST EXISTING MANHOLE RIM TO GRADE.
- 30E CONSTRUCT MOUNTABLE CURB AND TRANSITION PER DETAIL 08, SHEET A1.02.
- 30F CONSTRUCT FULL DEPTH AC.
- 30G CONSTRUCT CONCRETE CROSS GUTTER PER DETAIL 09, SHEET A1.02.
- 30H PLACE NEW CONCRETE OVER EXISTING AFTER TRUNCATED DOMES ARE REMOVED.

LEGEND



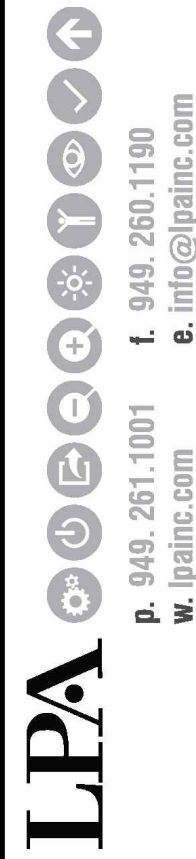
NOTE: IT IS THE CONTRACTOR'S RESPONSIBILITY TO PROVIDE BEST MANAGEMENT PRACTICES (BMP'S) FOR THE PROJECT CONSTRUCTION AREA, INCLUDING DRAIN INLET PROTECTION, EROSION CONTROL AND ANY OTHER BMP'S NECESSARY.



**Palomar College
Learning Resource Center
Sidewalk Connector Project**

Palomar Community College District

© Copyright 2014



p. 949.261.1001 t. 949.260.1190
w. lpainc.com e. info@lpainc.com

5161 California Avenue, Suite 100
Irvine, California 92617

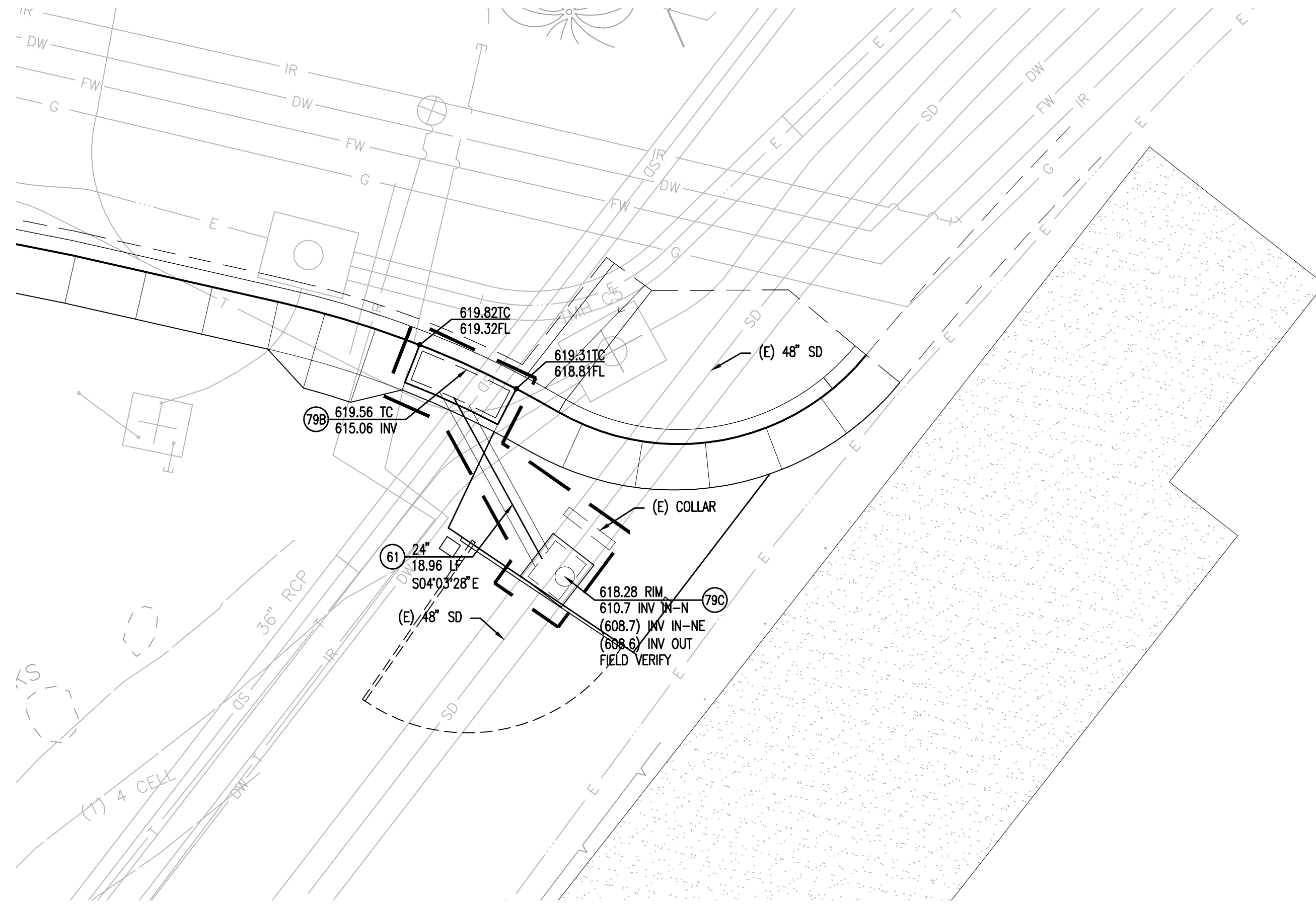
BID PACKAGE

Submittal

C6.0

Description
STORM DRAIN PLAN

Job. No.	12049.10
Reference	
Date	05-23-18
Scale	1"=10'



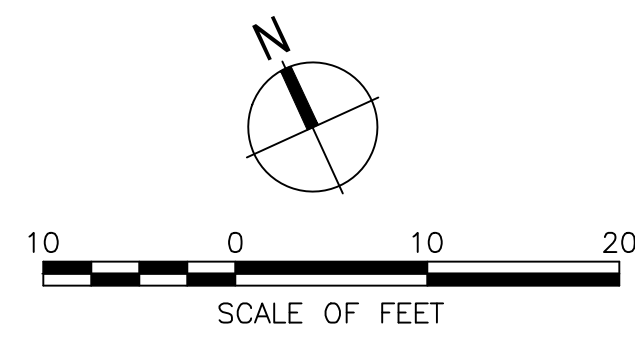
STORM DRAIN CONSTRUCTION NOTES:

- 61 INSTALL PVC SDR-35 (ASTM D 3034) WITH REQUIRED FITTING, AND PIPE TRENCH PER DETAIL 10, SHEET A1.02 PIPE SIZE AS SHOWN.
- 799 CONSTRUCT CURB OPENING CATCH BASIN (W=10') PER STANDARD PLANS FOR PUBLIC WORKS CONSTRUCTION STANDARD PLAN 300-3.
- 79C CONSTRUCT MANHOLE PIPE-TO-PIPE PER STANDARD PLANS FOR PUBLIC WORKS CONSTRUCTION STANDARD PLAN 320-2.

LEGEND


— — — — — LIMIT OF WORK

NOTE: IT IS THE CONTRACTOR'S RESPONSIBILITY TO PROVIDE BEST MANAGEMENT PRACTICES (BMP'S) FOR THE PROJECT CONSTRUCTION AREA, INCLUDING DRAIN INLET PROTECTION, EROSION CONTROL AND ANY OTHER BMP'S NECESSARY.



**Palomar College
Learning Resource Center
Sidewalk Connector Project**

Palomar Community College District
© Copyright 2014

LPA

 p. 949.261.1001 t. 949.260.1190
 w. lpainc.com e. info@lpainc.com

5161 California Avenue, Suite 100
Irvine, California 92617

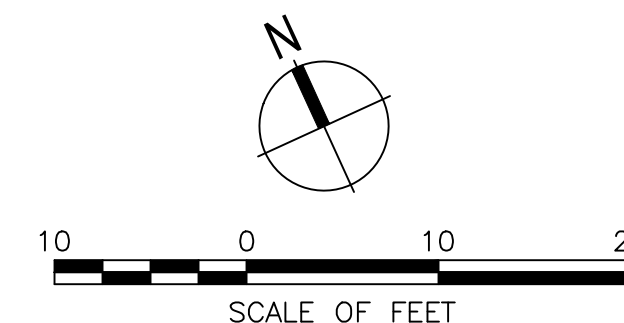
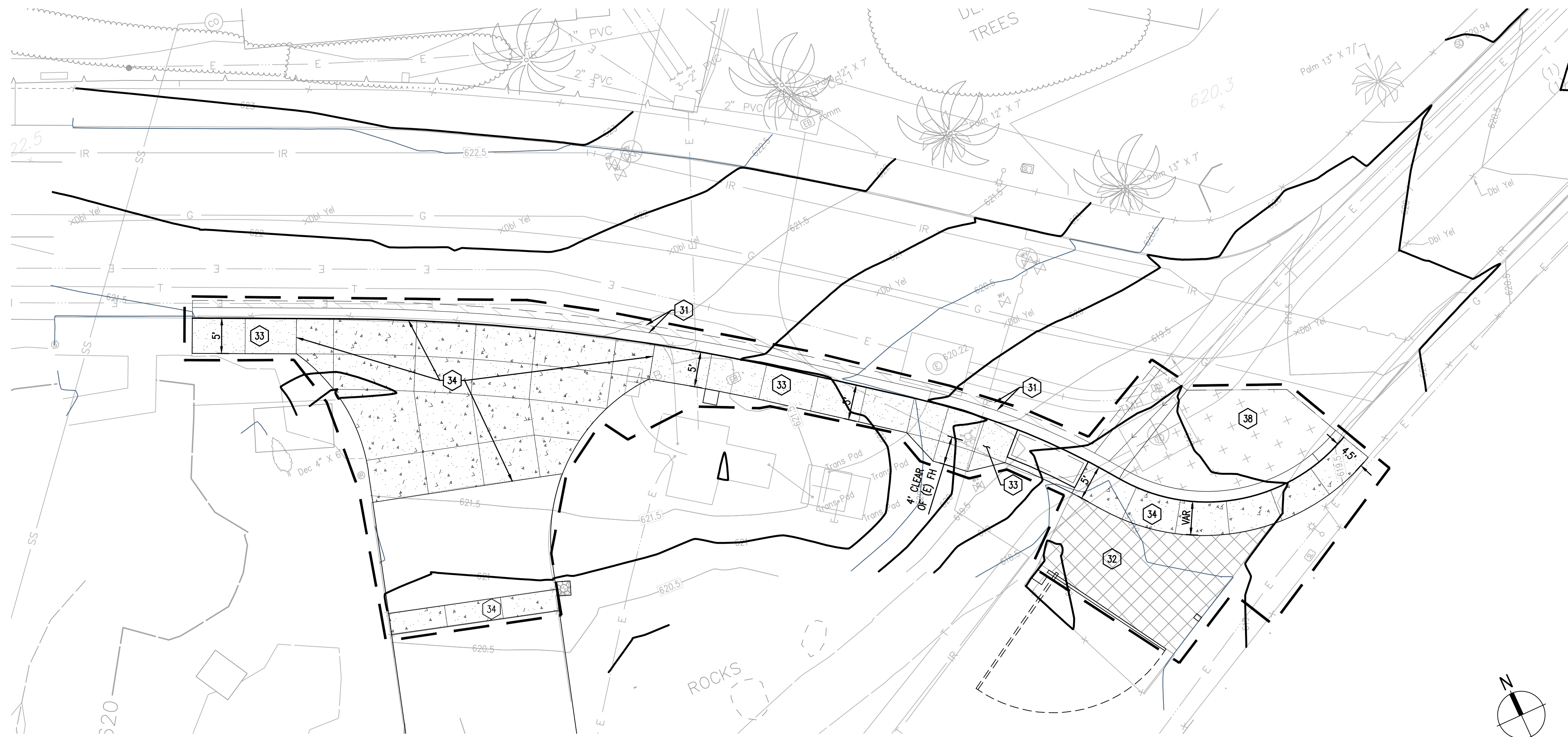
BID PACKAGE

Submittal

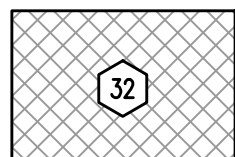
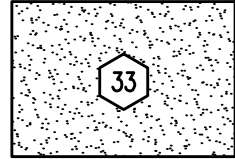

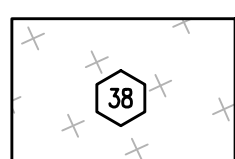
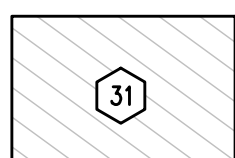
C9.1

Description
PAVING AND STRIPING PLAN

Job No.	12049-10
Reference	
Date	05-23-18
Scale	1"=10'



PAVING AND STRIPING LEGEND

SYMBOL	DESCRIPTION
	HEAVY DUTY AC PAVEMENT PLACE 4" AC OVER 10" CLASS II CAB. SCARIFY UPPER 12" OF SUBGRADE. COMPACT SUBGRADE AND CAB TO 95% RELATIVE COMPACTION PER ASTM D 1557.
	PEDESTRIAN CONCRETE PAVEMENT PLACE 5" PCC WITH #4@18" ON CENTER EACH WAY OVER 4" OF SAND, PER DETAIL 01, SHEET A1.02 SCARIFY UPPER 12" OF SUBGRADE. COMPACT SUBGRADE AND CAB TO 95% RELATIVE COMPACTION PER ASTM D 1557. REFERENCE LANDSCAPE PLAN SHEET L1.1 FOR CONCRETE FINISHES, CONTROL, AND EXPANSION JOINTS.
	VEHICULAR CONCRETE PAVEMENT PLACE 7.5" PCC OVER 4" CLASS II CAB WITH #4@18" ON CENTER EACH WAY, PER DETAIL 01, SHEET A1.02 AND WITH THICKENED EDGE. SCARIFY UPPER 12" OF SUBGRADE. COMPACT SUBGRADE AND CAB TO 95% RELATIVE COMPACTION PER ASTM D 1557. REFERENCE LANDSCAPE PLAN SHEET L1.1 FOR CONCRETE FINISHES, CONTROL, AND EXPANSION JOINTS.
	AC OVERLAY TYPE B AC (VARIABLE THICKNESS)
	FULL DEPTH AC TYPE B AC

LEGEND

— — — — — LIMIT OF WORK

NOTE: IT IS THE CONTRACTOR'S RESPONSIBILITY TO PROVIDE BEST MANAGEMENT PRACTICES (BMP'S) FOR THE PROJECT CONSTRUCTION AREA, INCLUDING DRAIN INLET PROTECTION, EROSION CONTROL AND ANY OTHER BMP'S NECESSARY.





p. 949.261.1001 f. 949.260.1190
w. lpalinc.com e. info@lpalinc.com

5161 California Avenue, Suite 100
Irvine, California 92617

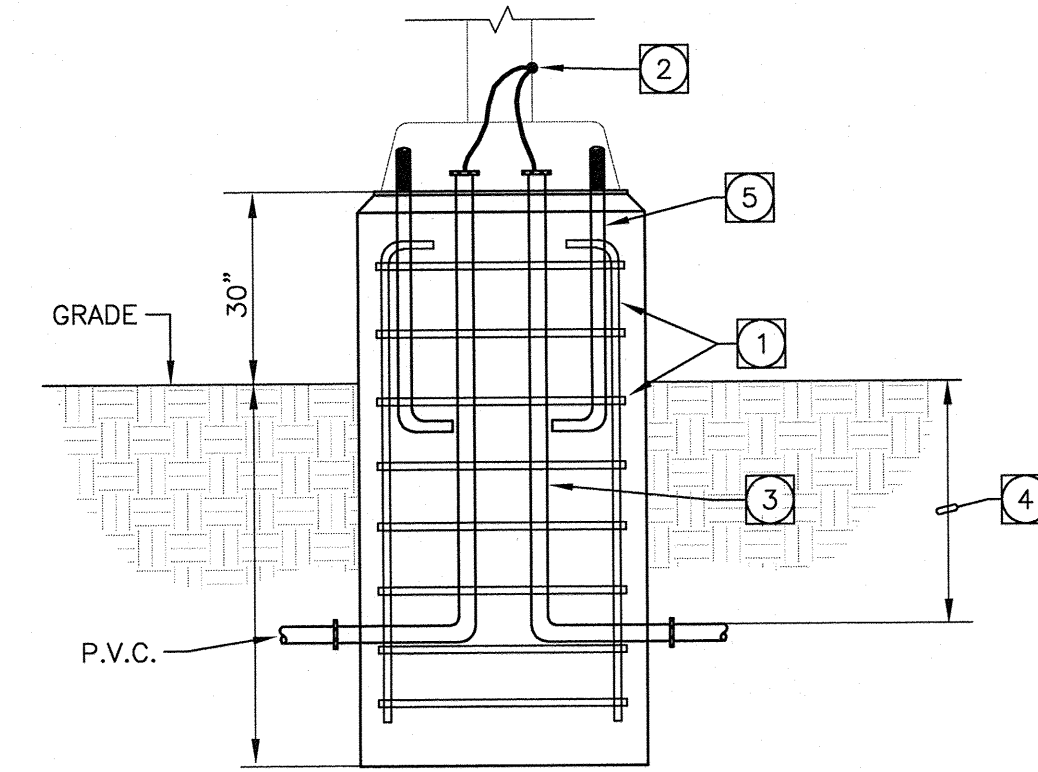
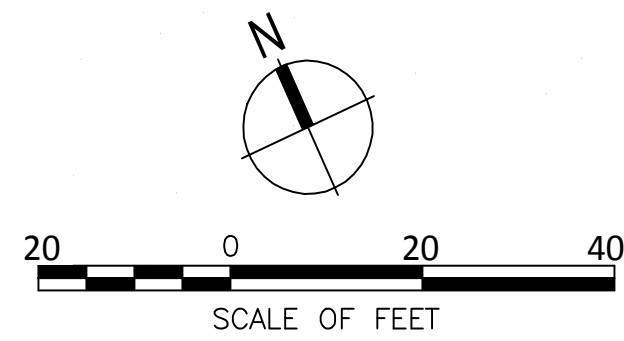
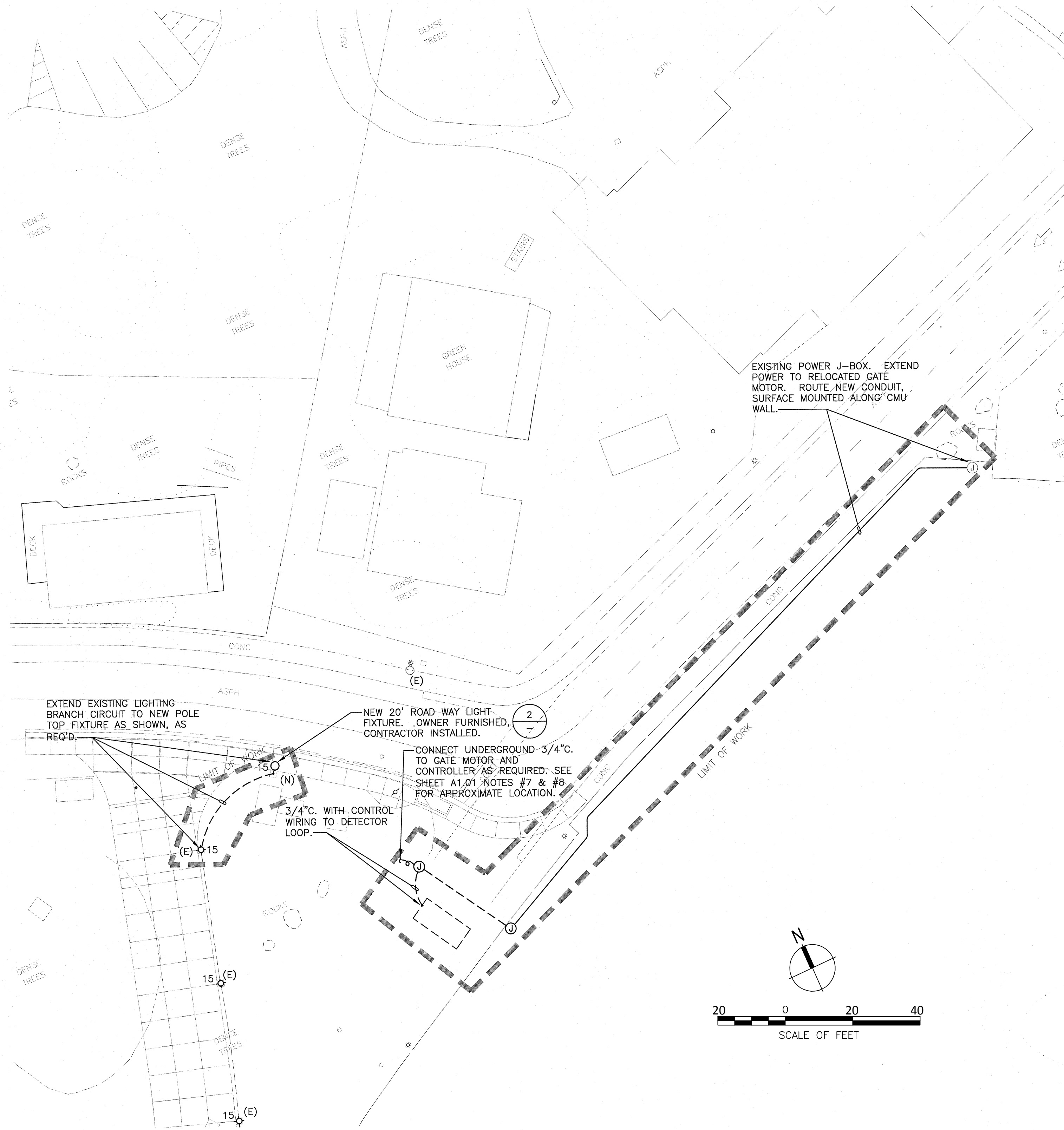
BID PACKAGE

Submittal

E-1.01

Description
PARTIAL SITE ELECTRICAL PLAN

Job. No.	12049.10
Reference	
Date	05-23-18
Scale	1"=20'



- 1 DETERMINED BY STRUCTURAL ENGINEER.
- 2 BOND EQUIPMENT GROUND TO POLE.
- 3 BRANCH CIRCUIT CONDUIT PER SITE PLAN.
- 4 PROVIDE MINIMUM COVER OF 24" FROM FINISH GRADE.
- 5 POLE ANCHOR BOLTS PER MANUFACTURER SPEC'S.

POLE BASE 'B' DETAIL

SCALE: N.T.S.

2

SITE PLAN GENERAL NOTES:

1. CONTRACTOR SHALL EXERCISE EXTREME CAUTION IN EXCAVATING AND TRENCHING ON THIS SITE TO AVOID EXISTING DUCTS, PIPING OR CONDUITS, ETC., AND TO PREVENT HAZARDS TO PERSONNEL AND/OR DAMAGE TO EXISTING UNDERGROUND UTILITIES OR STRUCTURES WHETHER OR NOT SHOWN AND INSTALLED BY ANY OTHER CONTRACTS. THE ENGINEER IS NOT RESPONSIBLE FOR THE LOCATION OF UNDERGROUND UTILITIES OR STRUCTURES WHETHER OR NOT SHOWN OR DETAILED AND INSTALLED BY ANY OTHER CONTRACTS. THE CONTRACTOR SHALL IMMEDIATELY NOTIFY THE ENGINEER SHOULD SUCH UNIDENTIFIED CONDITIONS BE DISCOVERED. THESE DRAWINGS AND SPECIFICATIONS DO NOT INCLUDE THE NECESSARY ELEMENTS FOR CONSTRUCTION SAFETY.
2. CALL UNDERGROUND SERVICE ALERT (USA) AT 1 (800) 422-4133 OR APPLICABLE STATE AND LOCAL DIG SAFE OR UNDERGROUND ALERT HOTLINES PRIOR TO CONSTRUCTION START.
3. MINIMUM CONDUIT SIZE SHALL BE 3/4" - U.O.N.
4. MINIMUM CONDUCTOR SIZE SHALL BE #10 AWG. - U.O.N.
5. ALL SITE BRANCH CIRCUITS SHALL INCLUDE A NEC SIZED EQUIPMENT GROUND CONDUCTOR.
6. ALL ELECTRICAL EQUIPMENT MOUNTED OUTDOORS SHALL BE WEATHERPROOF (NEMA #3R).
7. ALL CONDUIT ONLY SHALL BE PROVIDED WITH A NYLON PULL STRING.
8. SEE ARCHITECTURAL/LANDSCAPE ARCHITECTURAL PLANS FOR EXACT LOCATIONS OF FIXTURES, PULLBOXES, MANHOLES, OTHER ELECTRICAL DEVICES, ETC. COORDINATE ALL UNDERGROUND STRUCTURES AND CONDUIT ROUTING WITH LANDSCAPE ARCHITECT PRIOR TO ROUGH-IN TO ENSURE THAT SUCH ITEMS ARE NOT PLACED IN CRITICAL LANDSCAPE PLANTING/HARDSCAPE AREAS.
9. UNLESS SPECIFICALLY SHOWN AS (E), (R), (ER), (D), EXISTING OR NON-BOLD, ALL ELECTRICAL DEVICES SHOWN ARE NEW.