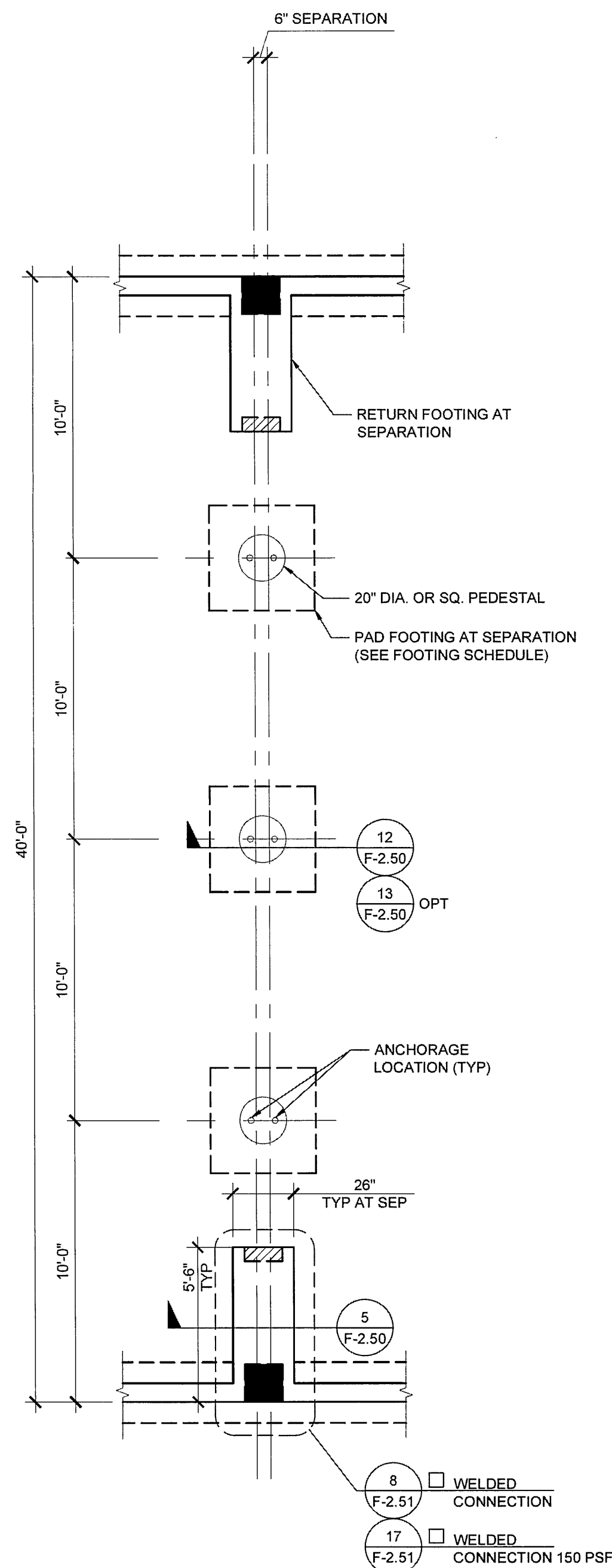


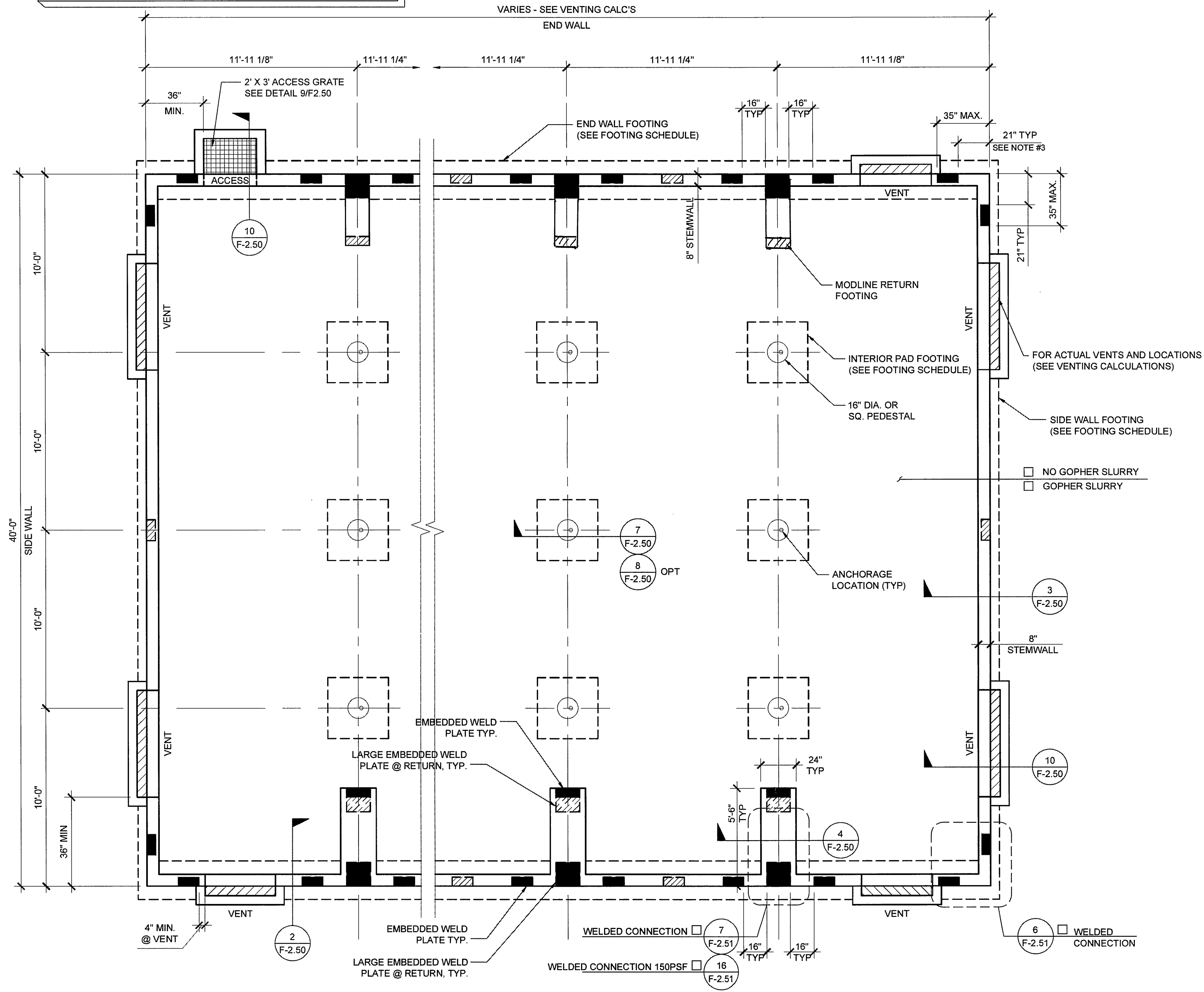
ANCHOR PLATE SCHEDULE (S ₆ UP TO 2.80g)			
TOTAL NO. OF ANCHOR PLATES ALONG EACH DIRECTION (MATE-LINE END PLATES MAY BE COUNTED IN END WALL DIRECTION)			
No. OF MODULES	DIRECTION	DESIGN FLOOR LIVE LOAD	
		UP TO 100 PSF	150 PSF
2	SIDE WALL	3	3
	END WALL	5	6
	MATE LINE	2 LARGE + 2 SMALL	4 LARGE
3	SIDE WALL	3	3
	END WALL	7	9
	MATE LINE	2 LARGE + 2 SMALL	4 LARGE
4	SIDE WALL	3	3
	END WALL	9	12
	MATE LINE	2 LARGE + 2 SMALL	4 LARGE
5	SIDE WALL	3	3
	END WALL	11	15
	MATE LINE	2 LARGE + 2 SMALL	4 LARGE
6	SIDE WALL	3	3
	END WALL	13	18
	MATE LINE	2 LARGE + 2 SMALL	4 LARGE
7	SIDE WALL	3	3
	END WALL	15	21
	MATE LINE	2 LARGE + 2 SMALL	4 LARGE
8	SIDE WALL	3	3
	END WALL	17	24
	MATE LINE	2 LARGE + 2 SMALL	4 LARGE
9	SIDE WALL	3	3
	END WALL	19	27
	MATE LINE	2 LARGE + 2 SMALL	4 LARGE
10	SIDE WALL	3	3
	END WALL	21	30
	MATE LINE	2 LARGE + 2 SMALL	4 LARGE

- ANCHOR NOTES:
- ANCHOR PLATES SHALL BE PLACED SUCH THAT THE FOLLOWING MINIMUM CRITERIA ARE MET:
 - ONE (1) LARGE ANCHOR PLATE AT EA. END OF EVERY MATE LINE.
 - ONE (1) ANCHOR PLATE WITHIN 35° OF OVERALL BUILDING CORNERS IN EA DIRECTION.
 - SIDE WALL AND END WALL ANCHOR PLATES, OTHER THAN THOSE DESCRIBED IN NOTE 1, MAY BE PLACED AT ANY LOCATION ALONG THE BUILDING, BUT SHOULD BE SPACED AS EVENLY AS POSSIBLE.
 - ANCHOR PLATES WITHIN 21" OF A VENT, OPENING, OR CORNER SHALL BE REINFORCED WITH HAIRPINS PER 19/F-2.51

SYMBOLS LEGEND	
	WELD PLATE FOR 50, 50+15, OR 100 PSF FLOOR LOAD OPTION
	WELD PLATE FOR 150 PSF FLOOR LOAD OPTION
	16" x 16" x 3/8" PLATE, SEE DETAIL 14 / F-2.51



FOOTING AT SEPARATION SCALE: 1/4" = 1'-0" 2



FOUNDATION PLAN SCALE: 1/4" = 1'-0" 1

NOTES

- FOUNDATION PLAN HAS A 1/4" ADDED AT EACH MODULE LINE AND DOES NOT MATCH THE FLOOR PLAN. ADDITIONAL LENGTH ADDED FOR GROWTH THAT IS EXPERIENCED WHEN SETTING MULTIPLE MODULE BUILDINGS.
- 8'-0" MAXIMUM VENT SIZE AT SIDE WALLS
4'-0" MAXIMUM VENT SIZE AT END WALLS
3'-0" MINIMUM DISTANCE FROM EDGE OF VENT TO STEMWALL CORNER
2'-0" MINIMUM DISTANCE BETWEEN VENT EDGES
- CRAWLSPACE VAPOR RETARDERS (OPTIONAL):
THE OPTIONAL TOTAL AREA OF VENTILATION OPENINGS IS PERMITTED TO BE REDUCED TO 1/1500 FACTOR WITH AN APPROVED VAPOR RETARDER MATERIAL PER CBC SECTION 1203.3.2(2).
MATERIALS:
GROUND SURFACE COVERED WITH AN APPROVED VAPOR RETARDER MATERIAL; MUST HAVE A PERM RATING OF ONE OR LESS; SHOULD BE CONTINUOUS; POLYETHYLENE FILM (> 6 MIL); POOL LINER (PUNCTURE RESISTANT); AND POLYETHYLENE FILM WITH RAT SLAB.
INSTALLATION RECOMMENDATIONS:
OVERLAP JOINTS BY 6 INCHES; TAPE OR SEAL ALL JOINTS; EXTEND VAPOR RETARDER A MINIMUM OF 6 INCHES UP THE STEM WALL (MORE IS BETTER); ATTACH VAPOR RETARDER TO BOTTOM PLATES; SEAL TO ALL PIERS AND OTHER PENETRATIONS.
- SOIL BEARING PRESSURE OF 1500 PSF USED FOR DESIGN.
- PROFESSIONAL SOILS REPORT: IF A SOILS REPORT IS REQUIRED BY DSA ON THIS BUILDING(S) AND THE RECOMMENDATIONS CAUSE AN INCREASE IN THE COST OF THE ORIGINAL FOUNDATION, THEN THE DISTRICT AGREES TO ACCEPT AND APPROVE A CHANGE ORDER IN THE AMOUNT OF THE COST INCREASE.

VENTING SCHEDULE

- VENT "A": (8'-0" x 8" METAL SCREEN COVER)
7'-10" x 5" = 3.26 S.F. VENTILATION
- VENT "B": (6'-0" x 8" METAL SCREEN COVER)
5'-10" x 5" = 2.43 S.F. VENTILATION
- VENT "C": (4'-0" x 8" METAL SCREEN COVER)
3'-10" x 5" = 1.59 S.F. VENTILATION
- ACCESS/VENT "D": (3'-0" x 2'-0" METAL SCREEN COVER)
2'-10" x 18" = 4.25 S.F. VENTILATION

VENTING CALCULATION:

- 24' x 40' BUILDING: 24' x 40' = 960 SF / 150 = 6.4 SF VENT. REQ'D
- 2'-"C" VENT = 3.18 SF
1'-"D" ACCESS VENT = 4.25 SF
7.43 SF TOTAL VENTILATION (> 6.4 SF)
- 36' x 40' BUILDING: 36' x 40' = 1440 SF / 150 = 9.6 SF VENT. REQ'D
- 1'-"A" VENT = 3.26 SF
1'-"B" VENT = 2.43 SF
1'-"D" ACCESS VENT = 4.25 SF
9.94 SF TOTAL VENTILATION (> 9.6 SF)
- 48' x 40' BUILDING: 48' x 40' = 1920 SF / 150 = 12.8 SF VENT. REQ'D
- 1'-"A" VENT = 3.26 SF
2'-"B" VENT = 4.86 SF
1'-"C" VENT = 1.59 SF
1'-"D" ACCESS VENT = 4.25 SF
13.96 SF TOTAL VENTILATION (> 12.8 SF)
- 60' x 40' BUILDING: 60' x 40' = 2400 SF / 150 = 16 SF VENT. REQ'D
- 3'-"A" VENT = 9.78 SF
1'-"B" VENT = 2.43 SF
1'-"D" ACCESS VENT = 4.25 SF
16.46 SF TOTAL VENTILATION (> 16 SF)
- 72' x 40' BUILDING: 72' x 40' = 2880 SF / 150 = 19.2 SF VENT. REQ'D
- 4'-"A" VENT = 13.04 SF
1'-"B" VENT = 2.43 SF
1'-"D" ACCESS VENT = 4.25 SF
19.72 SF TOTAL VENTILATION (> 19.2 SF)
- 84' x 40' BUILDING: 84' x 40' = 3360 SF / 150 = 22.4 SF VENT. REQ'D
- 5'-"A" VENT = 16.30 SF
1'-"B" VENT = 2.43 SF
1'-"D" ACCESS VENT = 4.25 SF
22.98 SF TOTAL VENTILATION (> 22.4 SF)
- 96' x 40' BUILDING: 96' x 40' = 3840 SF / 150 = 25.6 SF VENT. REQ'D
- 6'-"A" VENT = 19.56 SF
2'-"C" VENT = 3.18 SF
1'-"D" ACCESS VENT = 4.25 SF
26.99 SF TOTAL VENTILATION (> 25.6 SF)
- 108' x 40' BUILDING: 108' x 40' = 4320 SF / 150 = 28.8 SF VENT. REQ'D
- 4'-"A" VENT = 13.04 SF
2'-"B" VENT = 4.86 SF
5'-"C" VENT = 7.95 SF
1'-"D" ACCESS VENT = 4.25 SF
30.10 SF TOTAL VENTILATION (> 28.8 SF)
- 120' x 40' BUILDING: 120' x 40' = 4800 SF / 150 = 32 SF VENT. REQ'D
- 6'-"A" VENT = 19.56 SF
6'-"C" VENT = 9.54 SF
1'-"D" ACCESS VENT = 4.25 SF
33.35 SF TOTAL VENTILATION (> 32 SF)

FOOTING SCHEDULE

DESIGN FLOOR LIVE LOAD	SIDEWALL FOOTING	ENDWALL FOOTING	INTERIOR PAD FOOTING	PAD FOOTING AT SEPARATION
50 PSF	12" WIDE (2) #5 CONT T&B	18" WIDE (3) #5 CONT T&B	3'-0" SQ (3) #5 EW	3'-10" SQ (4) #5 EW
50 + 15 PSF	12" WIDE (2) #5 CONT T&B	18" WIDE (3) #5 CONT T&B	3'-0" SQ (2) #5 EW	3'-10" SQ (4) #5 EW
100 PSF	12" WIDE (2) #5 CONT T&B	18" WIDE (3) #5 CONT T&B	3'-4" SQ (3) #5 EW	4'-2" SQ (4) #5 EW
150 PSF	14" WIDE (2) #5 CONT T&B	20" WIDE (3) #5 CONT T&B	4'-0" SQ (4) #5 EW	4'-8" SQ (4) #5 EW

REVISIONS

NO.	DESCRIPTION

IDENTIFICATION STAMP
DIV. OF THE STATE ARCHITECT
OFFICE OF REGULATION SERVICES

PC 04-114027

AC: _____ FLS: _____ SS: _____
DATE: APR 14 2015

SILVER CREEK INDUSTRIES
24' x 40' PC (HIGH SEISMIC)

PROJECT NO:
DRAWN BY:
SCALE: AS NOTED
DATE: 09-10-14

P.C. SHEET NUMBER
F-2.01
-- HIGH SEISMIC --

THESE DRAWINGS AND ALL MATERIAL CONTAINED HEREIN ARE THE PROPERTY OF SILVERCREEK INDUSTRIES, INC (SCI Inc) AND SHALL NOT BE REPRODUCED, COPIED OR OTHERWISE DISPOSED OF DIRECTLY OR INDIRECTLY AND SHALL NOT BE USED IN WHOLE OR IN PART TO ASSIST IN THE MAKING OF OR FOR THE PURPOSE OF FURNISHING ANY INFORMATION FOR THE MAKING OF DRAWINGS, PRINTS, APPARATUS OR PARTS THEREOF WITHOUT THE FULL KNOWLEDGE AND WRITTEN CONSENT OF SCI Inc.
ALL PATENTABLE MATERIAL CONTAINED HEREIN AND ORIGINATING WITH SCI Inc SHALL BE THE PROPERTY OF SCI Inc.

SILVER CREEK INDUSTRIES, INC.

"BUILDING FOR THE NEXT GENERATION"

SILVER CREEK

2830 BARRETT AVE. PERRIS, CALIFORNIA 92571
PHONE: 951-943-5393 FAX: 951-943-2211

PROJECT NAME:

SHEET TITLE:

CONCRETE FOUNDATION PLAN BELOW GRADE WOOD FLOOR

STAVARES ASSOCIATES
REGISTERED ARCHITECT
REGISTERED PROFESSIONAL ENGINEER
STRUCTURAL
STATE OF CALIFORNIA

REN 01-31-2015

04/01/2015

ARCHITECT OF RECORD
SUBMISSION DATE

PROJECT SPECIFIC STATE AGENCY APPROVAL

ORIGINAL PC STATE AGENCY APPROVAL

IDENTIFICATION STAMP

REVISIONS

SILVER CREEK INDUSTRIES

PROJECT NO:

DRAWN BY:

SCALE: AS NOTED

DATE: 09-10-14

P.C. SHEET NUMBER

F-2.01

-- HIGH SEISMIC --

THESE DRAWINGS AND ALL MATERIAL CONTAINED HEREIN ARE THE PROPERTY OF SILVERCREEK INDUSTRIES, INC. (SCI Inc) AND SHALL NOT BE REPRODUCED, COPIED OR OTHERWISE DISPOSED OF DIRECTLY OR INDIRECTLY AND SHALL NOT BE USED IN WHOLE OR IN PART TO ASSIST IN THE MAKING OF OR FOR THE PURPOSE OF FURNISHING ANY INFORMATION FOR THE MAKING OF DRAWINGS, PRINTS, APPARATUS OR PARTS THEREOF WITHOUT THE FULL KNOWLEDGE AND WRITTEN CONSENT OF SCI Inc. ALL PATENTABLE MATERIAL CONTAINED HEREIN AND ORIGINATING WITH SCI Inc SHALL BE THE PROPERTY OF SCI Inc.

SILVER CREEK INDUSTRIES, INC.



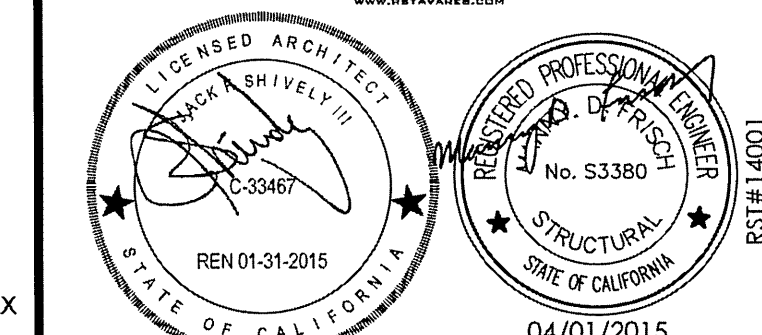
"BUILDING FOR THE NEXT GENERATION"

2830 BARRETT AVE. PERRIS, CALIFORNIA 92571
PHONE: 951-943-5393 FAX: 951-943-2211

PROJECT NAME:

SHEET TITLE:

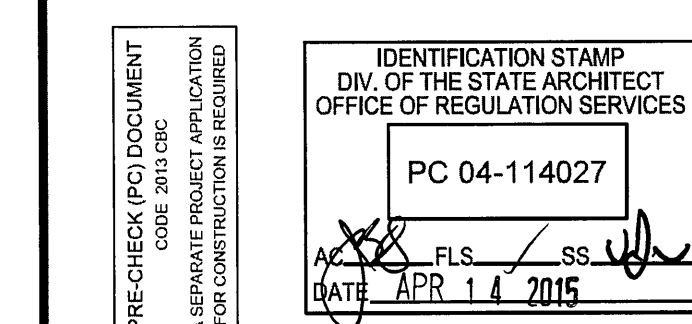
CONCRETE FOUNDATION DETAILS BELOW GRADE



ARCHITECT OF RECORD
SUBMISSION DATE

PROJECT SPECIFIC STATE AGENCY APPROVAL

ORIGINAL PC STATE AGENCY APPROVAL



REVISIONS

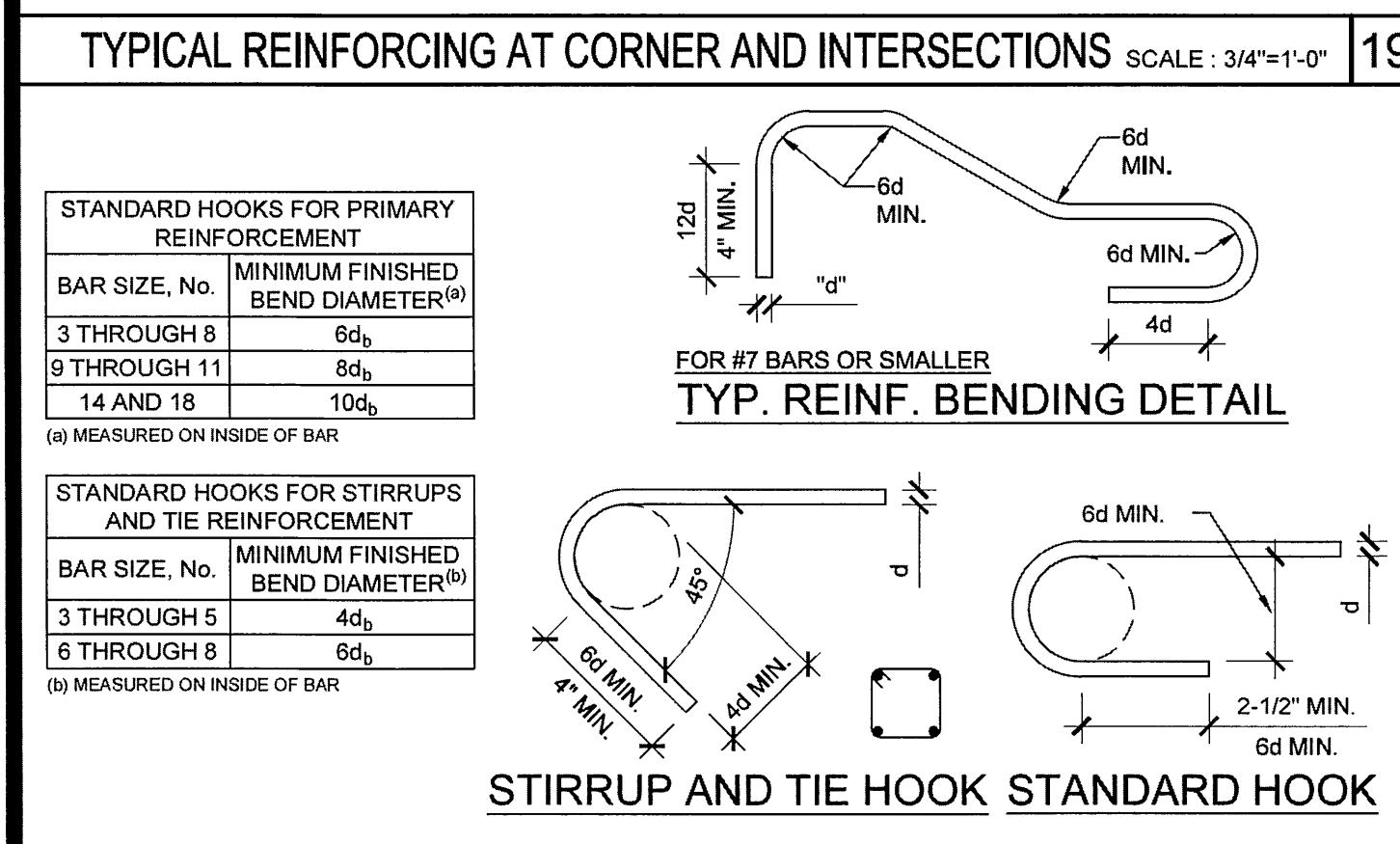
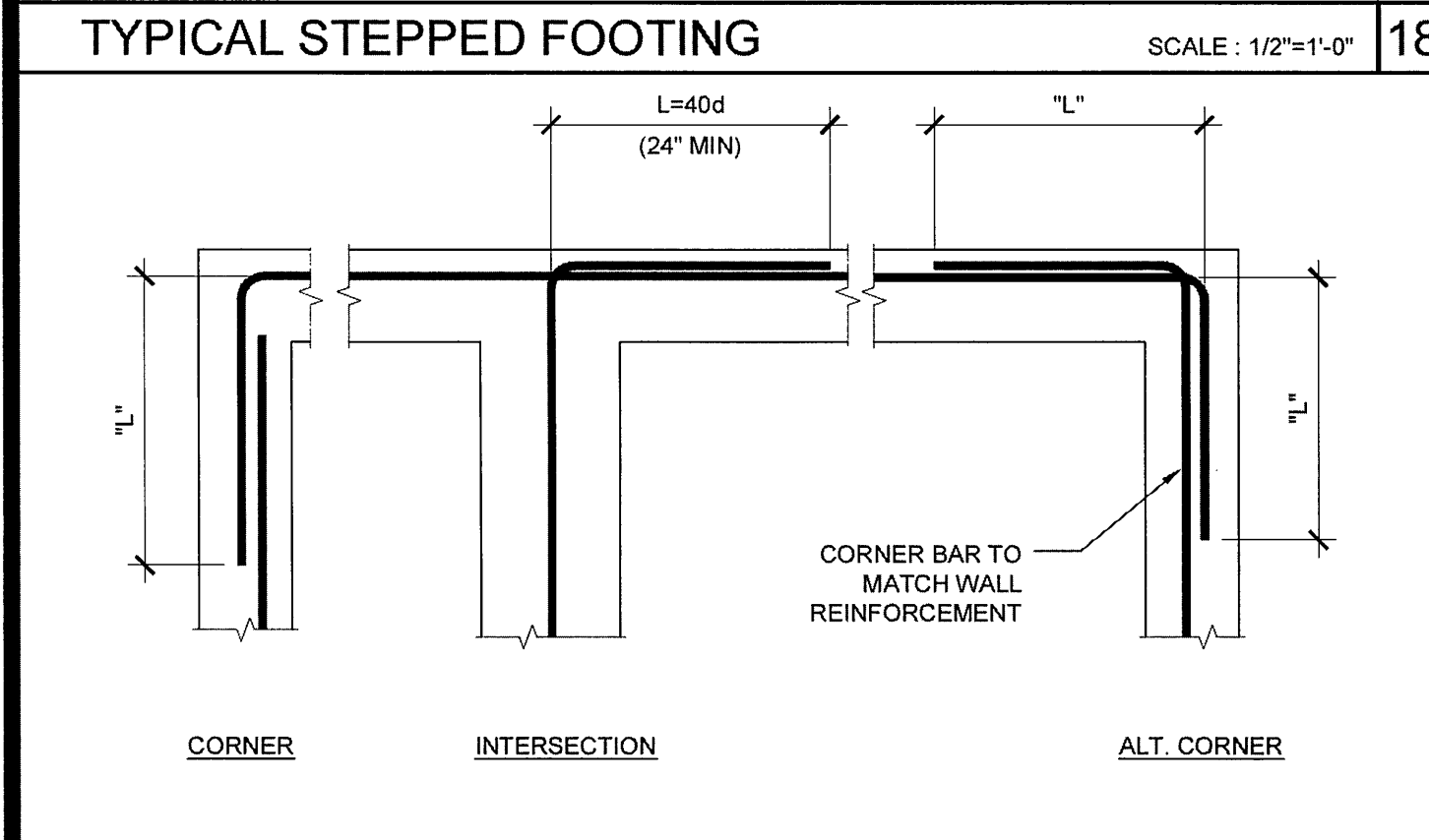
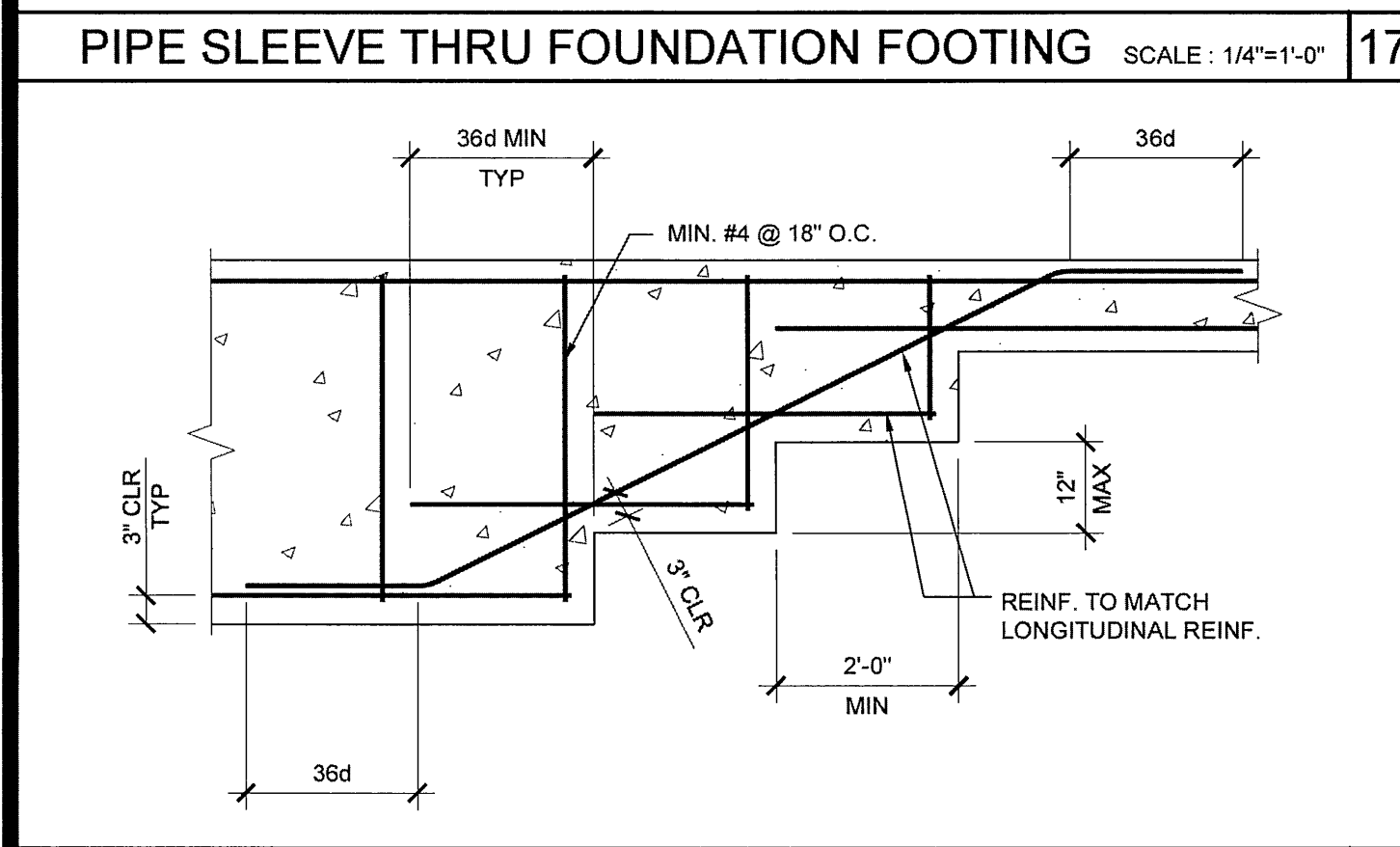
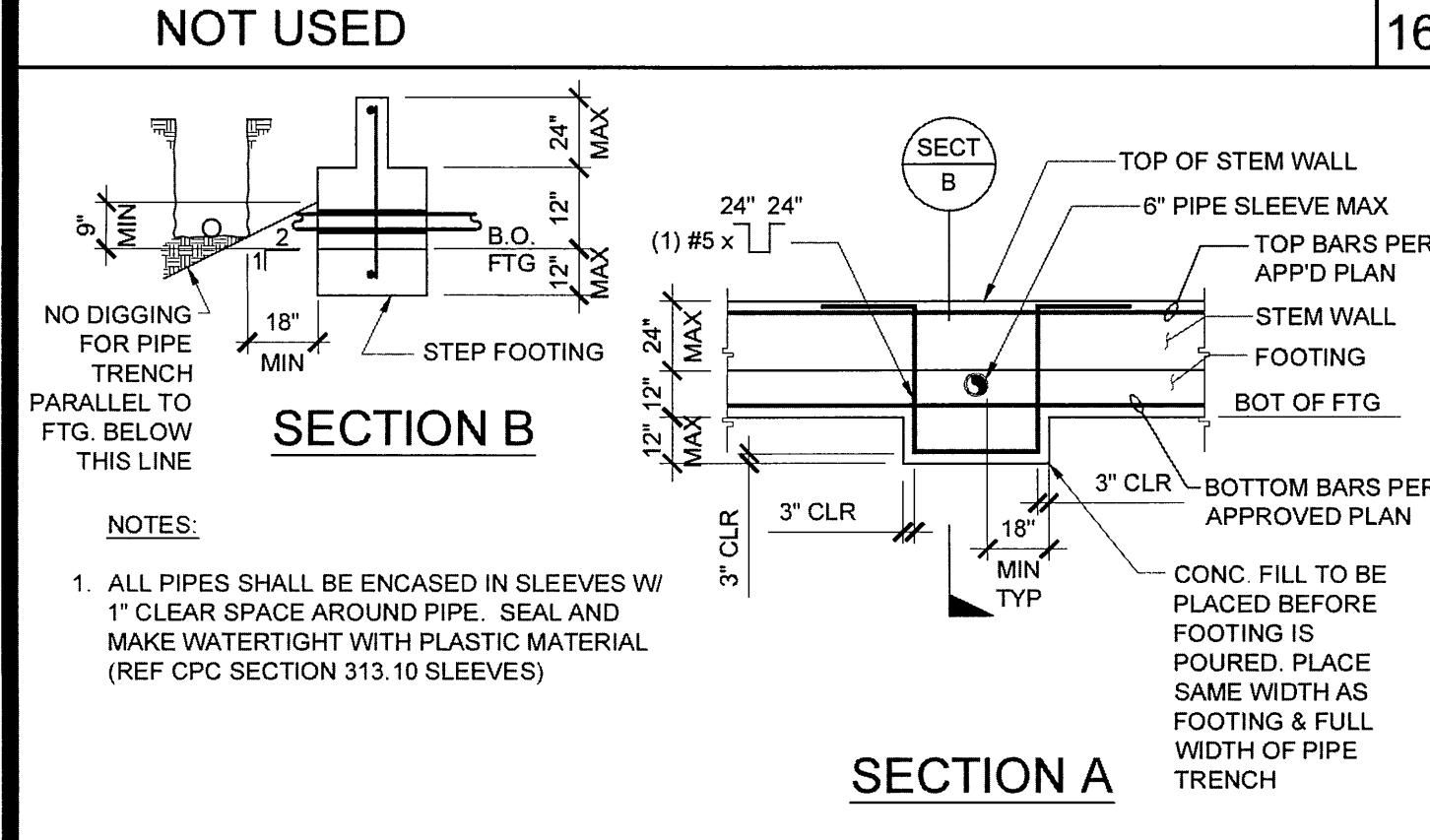
SILVER CREEK INDUSTRIES
24' x 40' PC (HIGH SEISMIC)

PROJECT NO:
DRAWN BY:
SCALE: AS NOTED
DATE: 09-10-14
P.C. SHEET NUMBER

F-2.50

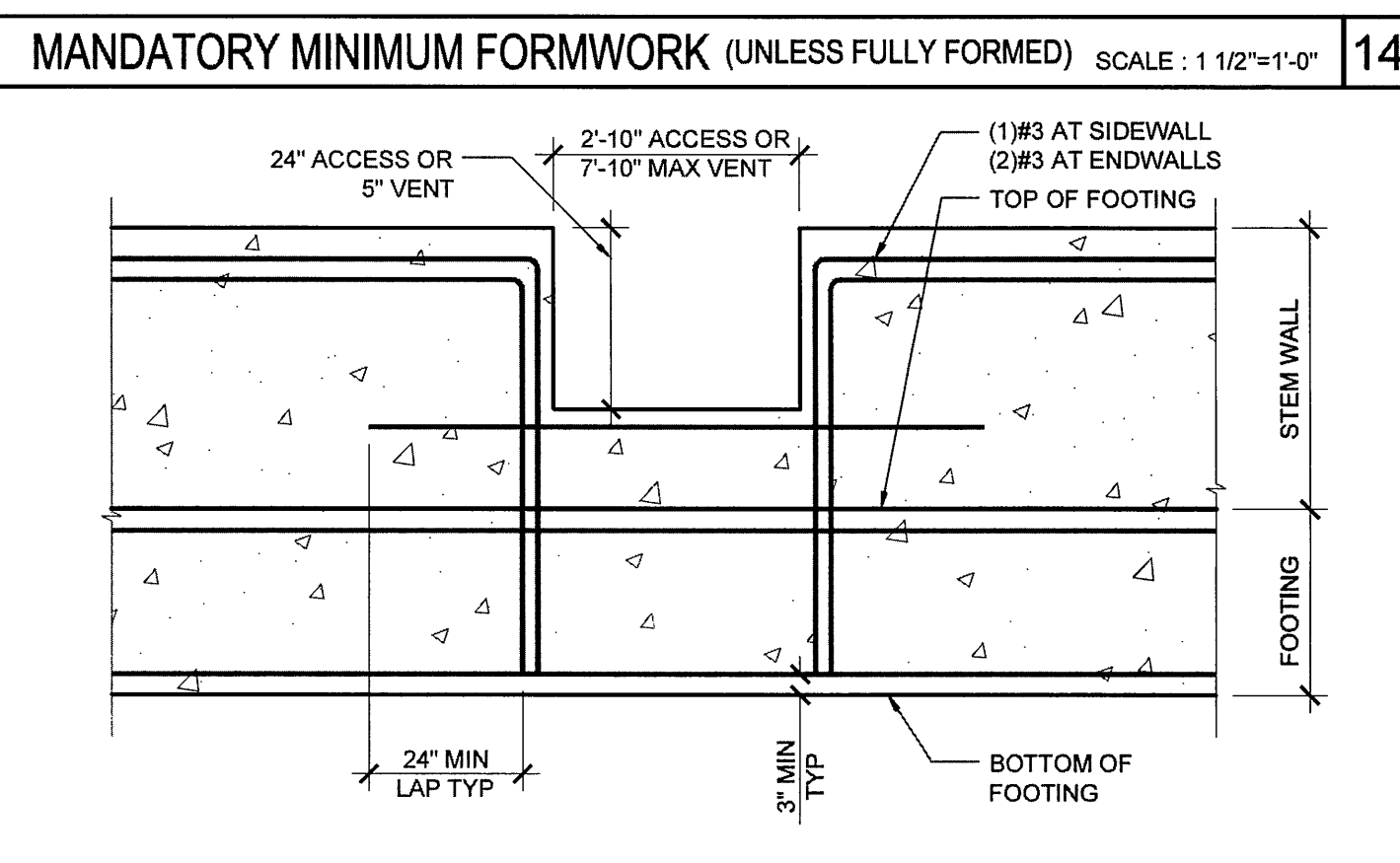
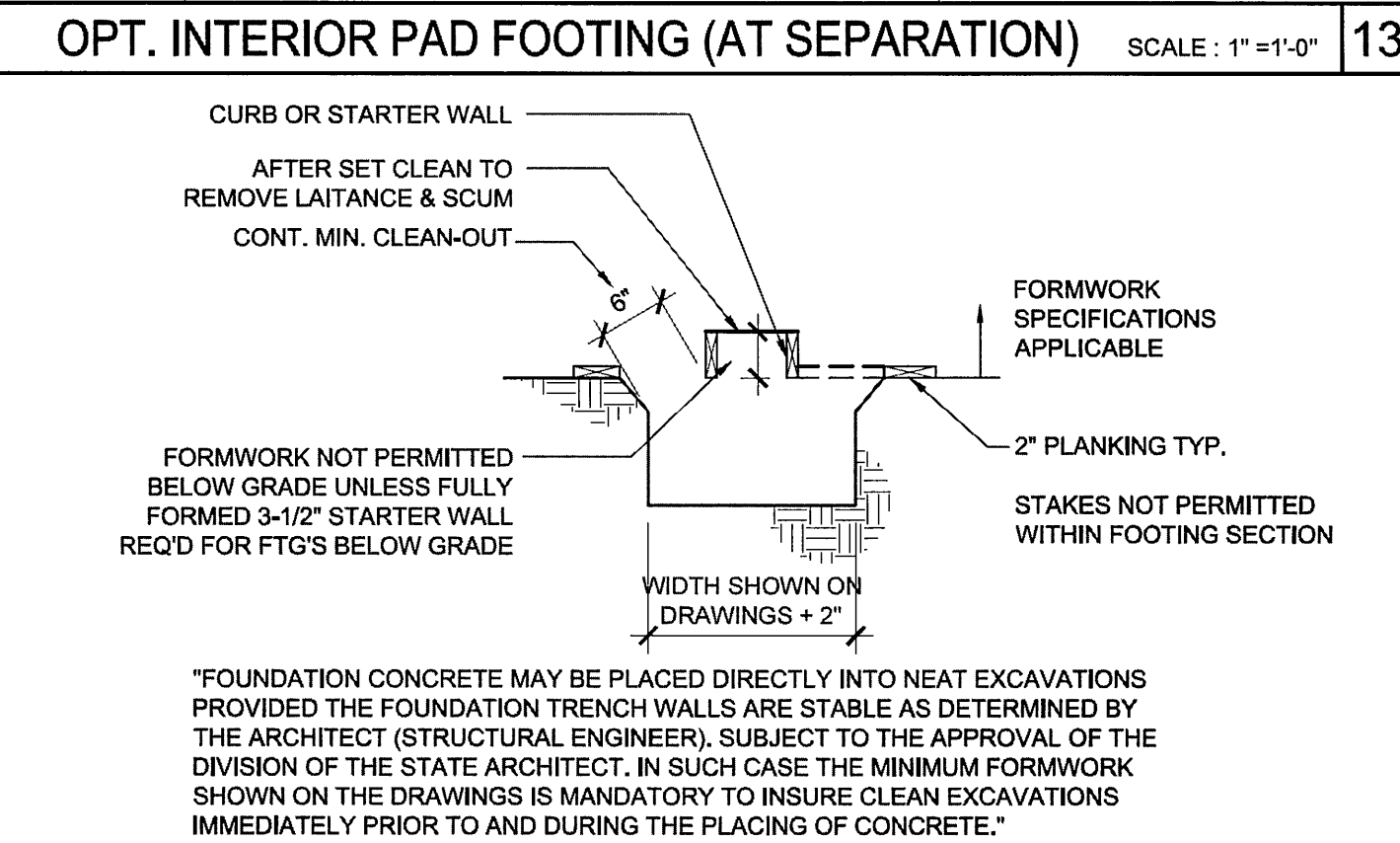
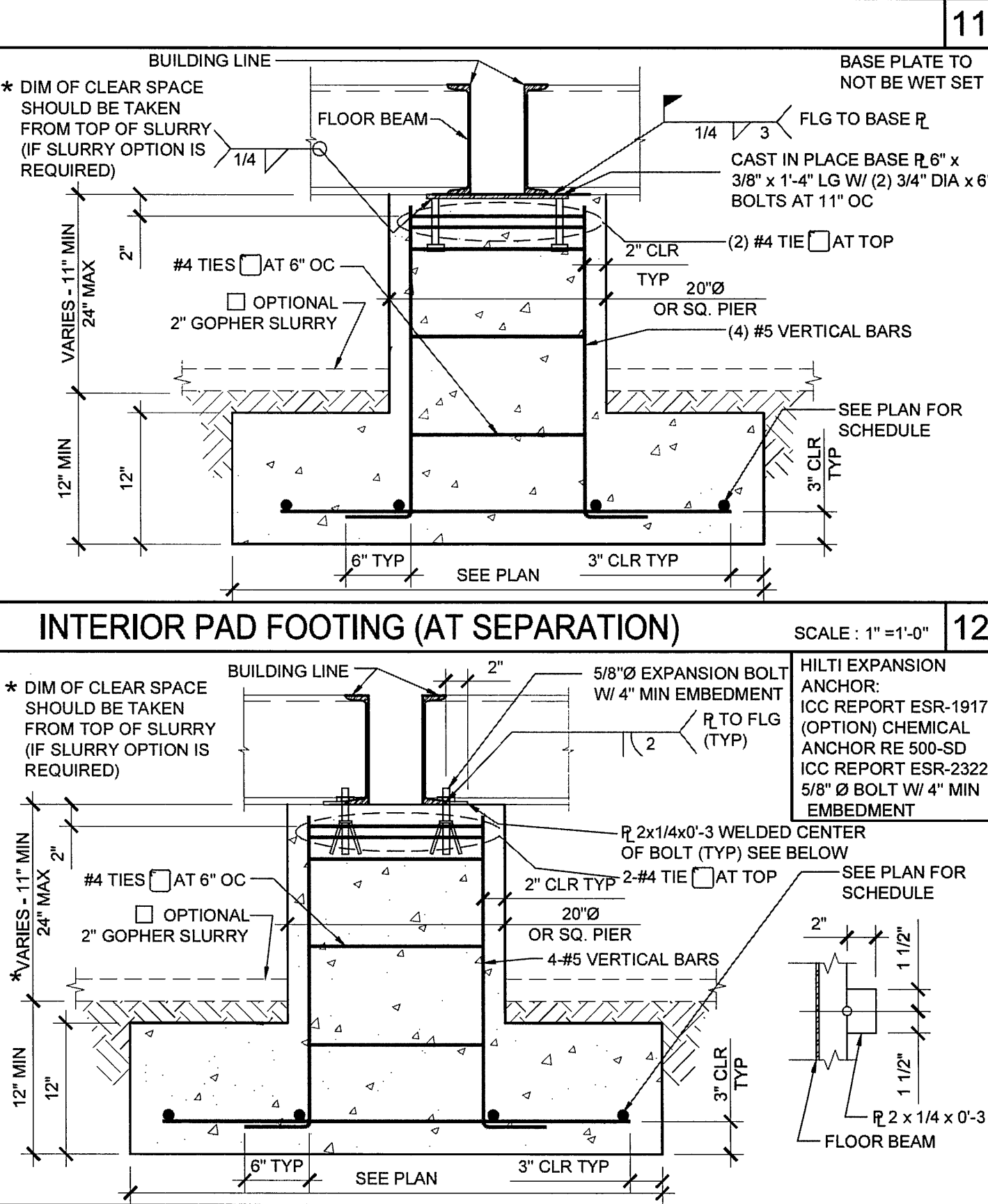
-- HIGH SEISMIC --

NOT USED 16



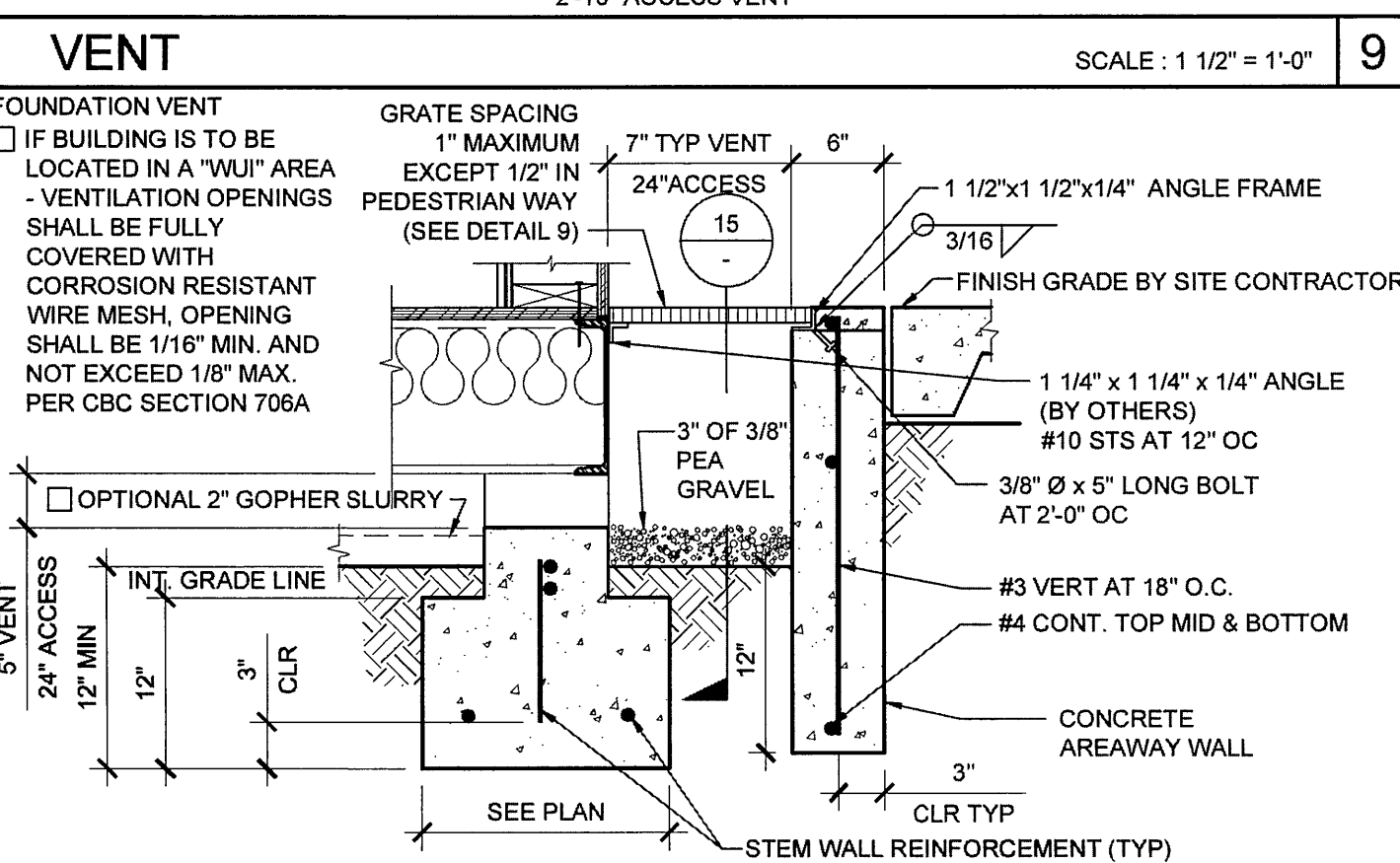
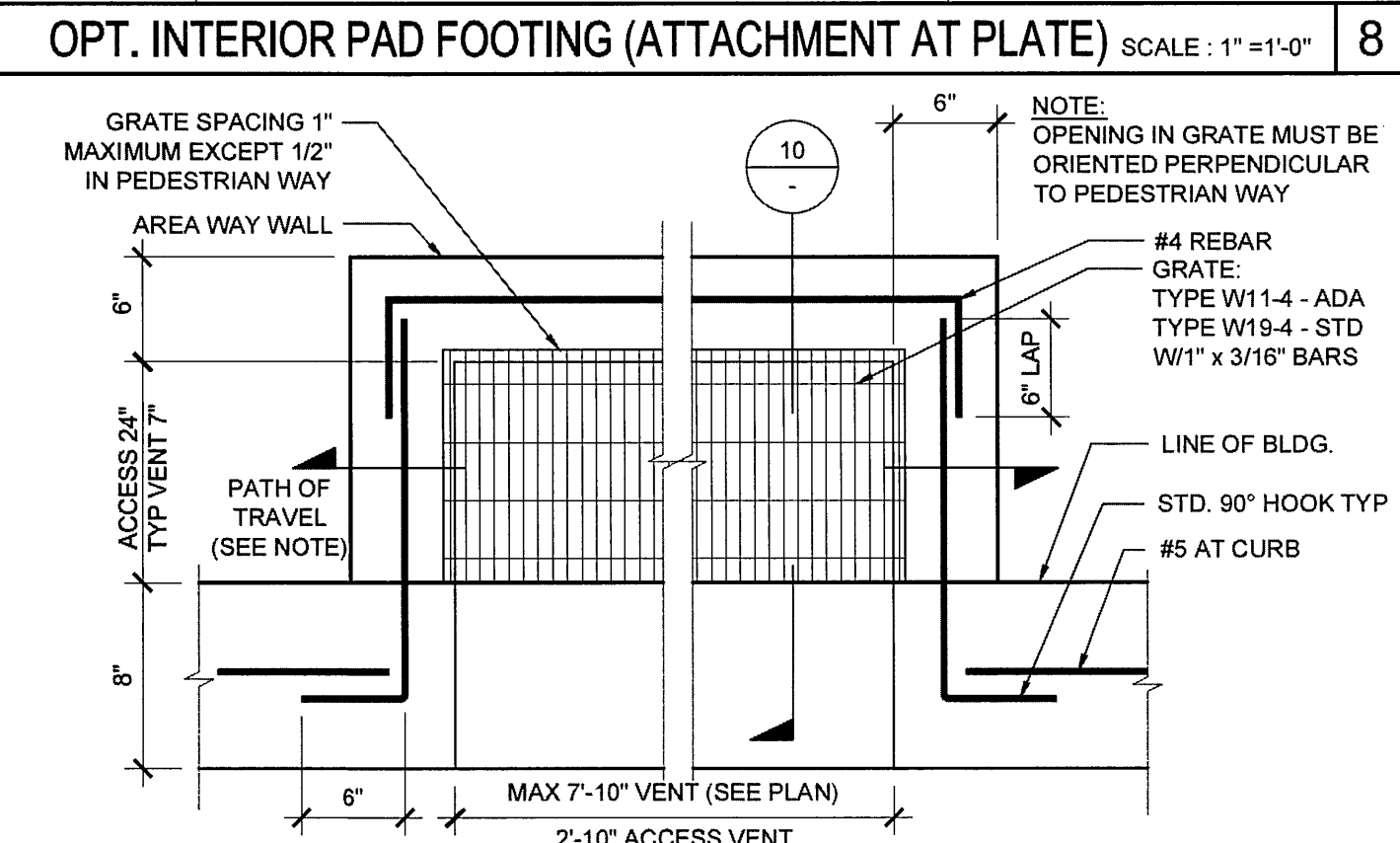
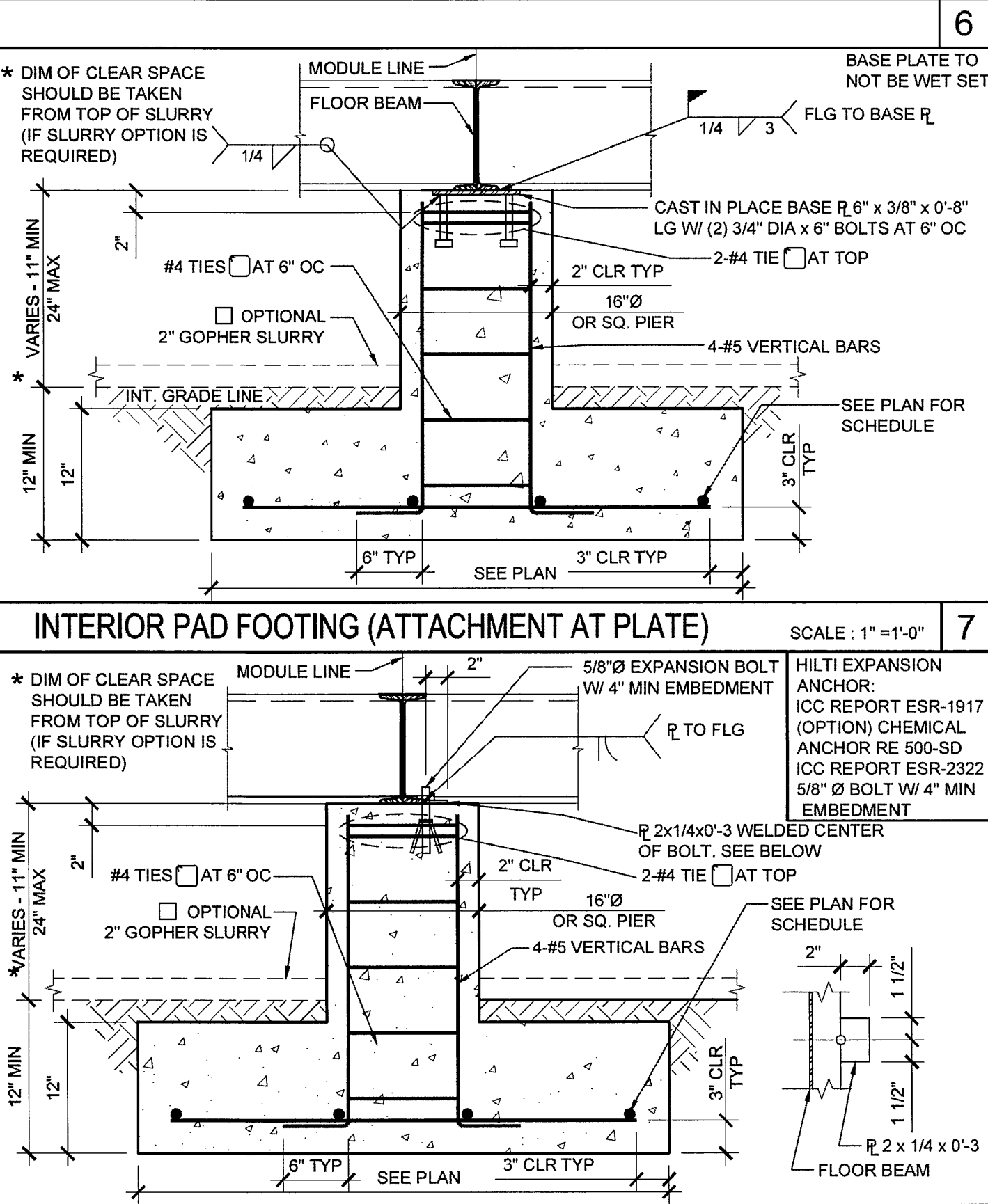
TYPICAL REINFORCING BENDING DETAILS SCALE: 1/2"=1'-0"

INTERIOR PAD FOOTING (AT SEPARATION) SCALE: 1"=1'-0"



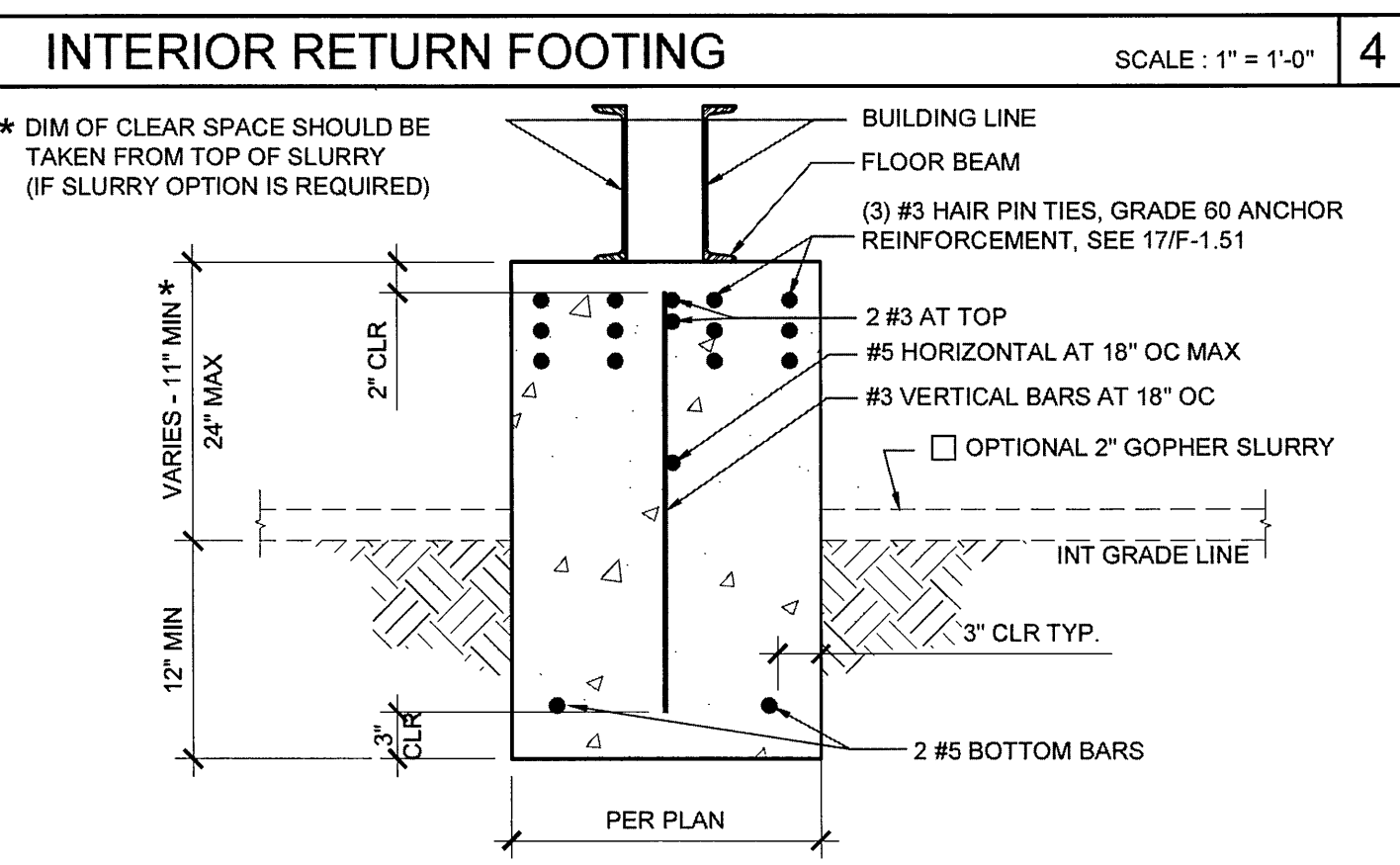
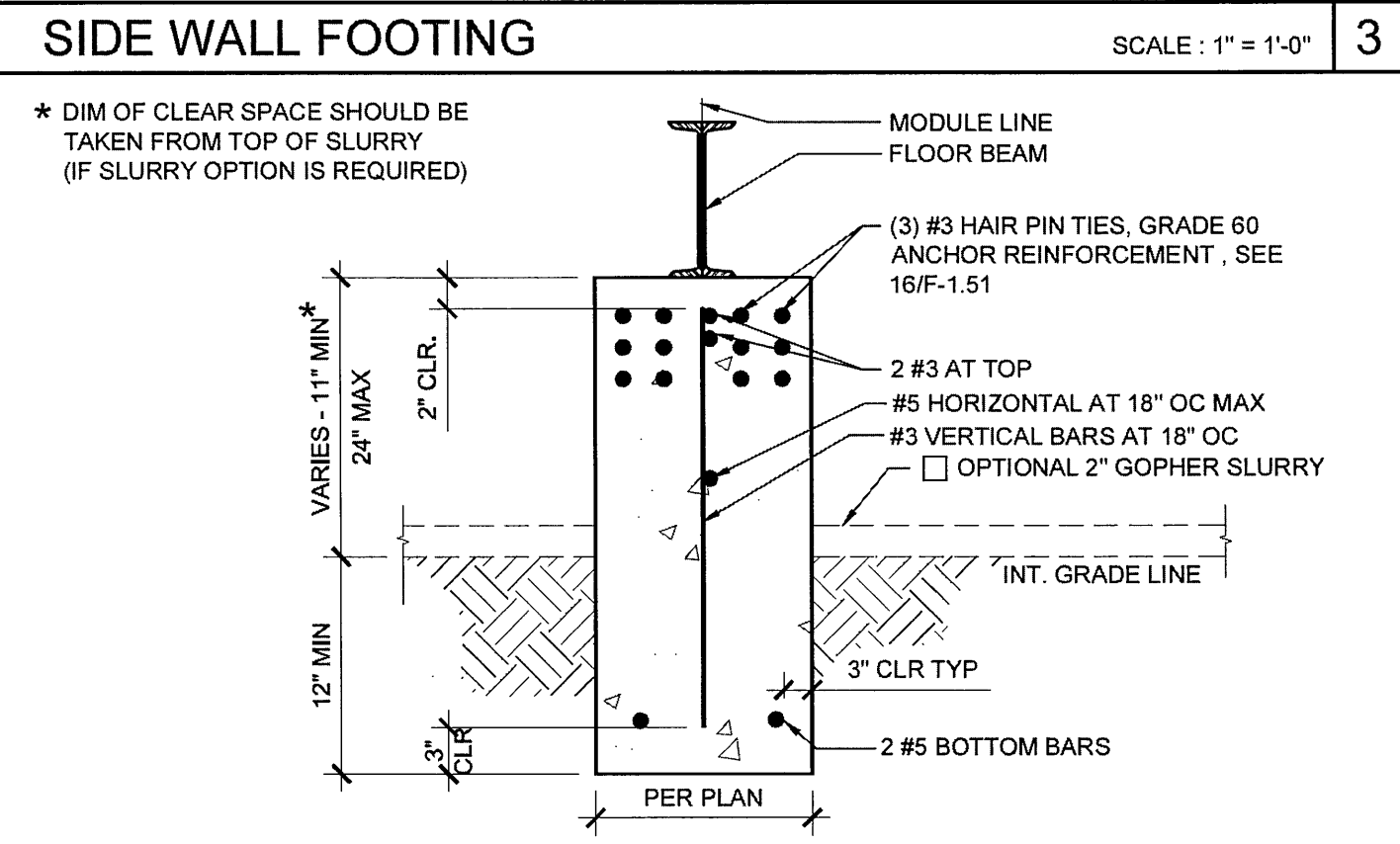
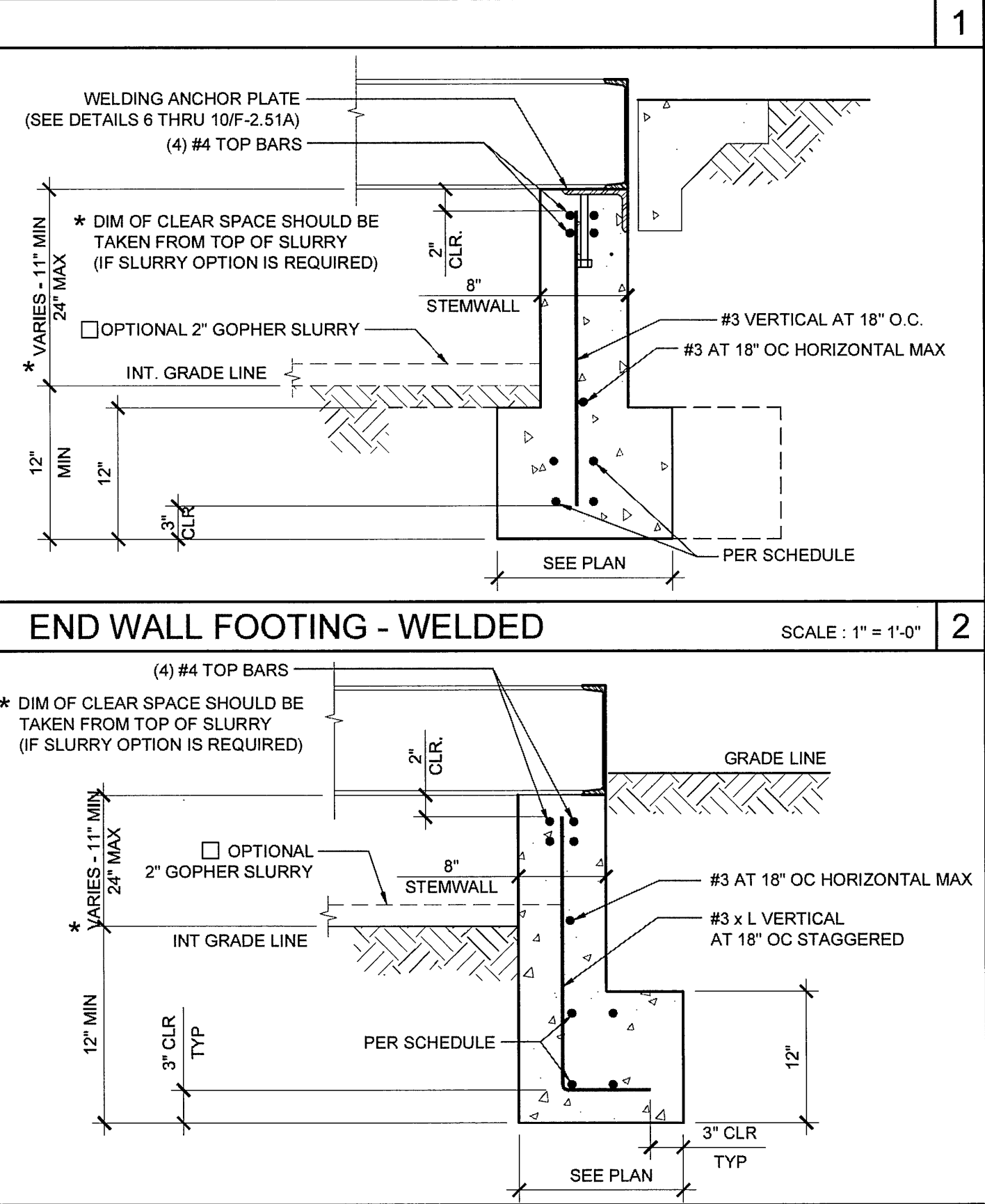
VENT OPENING SCALE: 1"=1'-0"

INTERIOR PAD FOOTING (ATTACHMENT AT PLATE) SCALE: 1"=1'-0"



VENT/ACCESS SECTION SCALE: 1"=1'-0"

END WALL FOOTING - WELDED SCALE: 1"=1'-0"



INTERIOR RETURN FOOTING AT SEPARATION SCALE: 1"=1'-0"

11

6

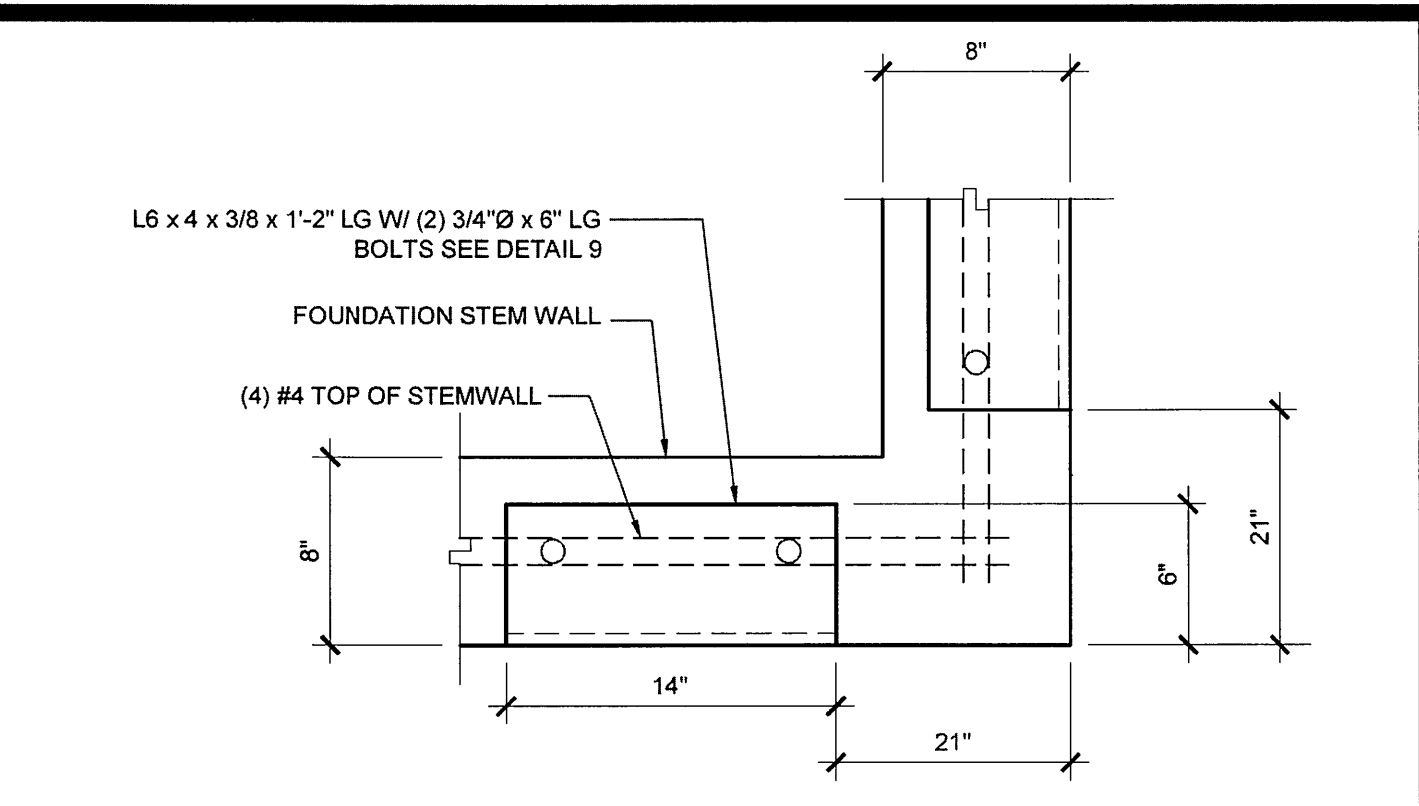
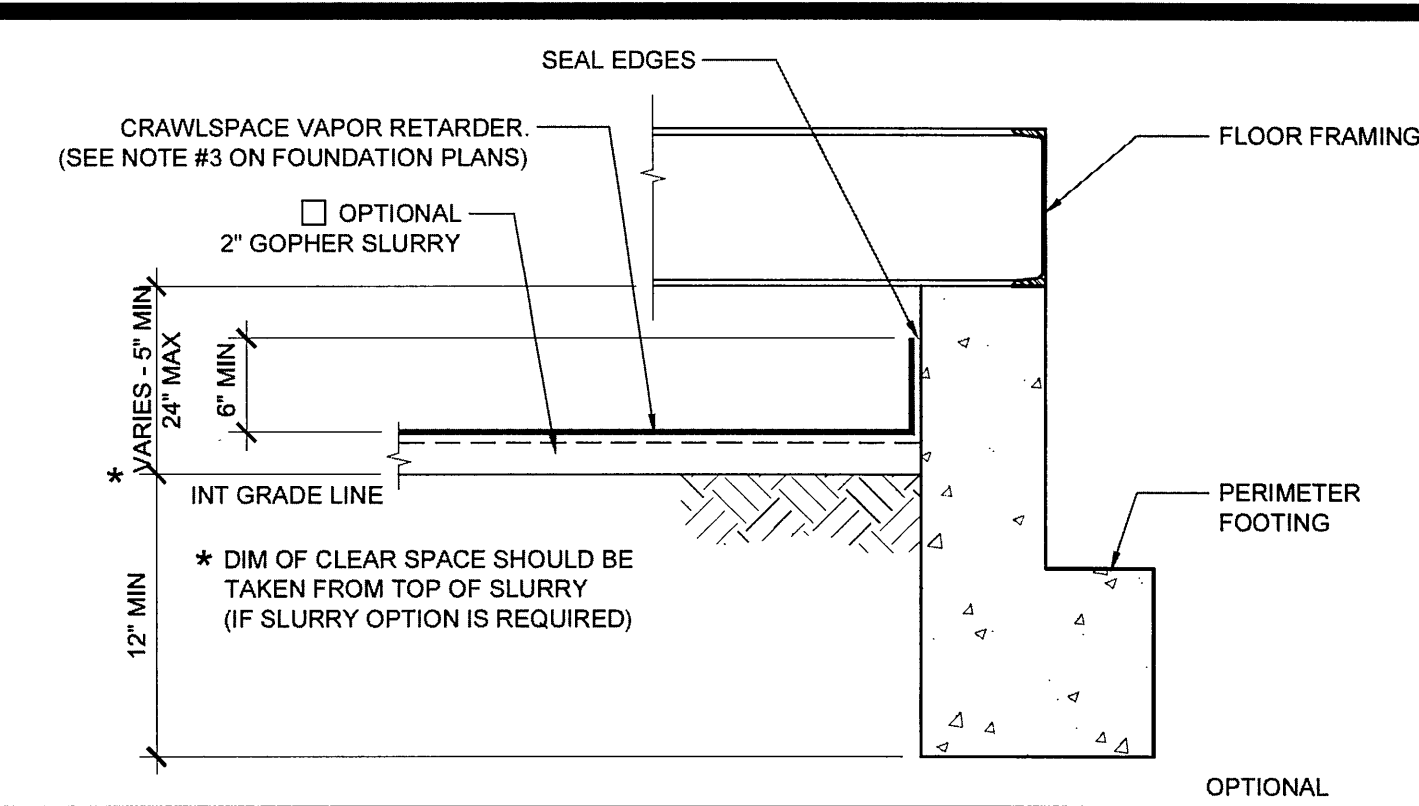
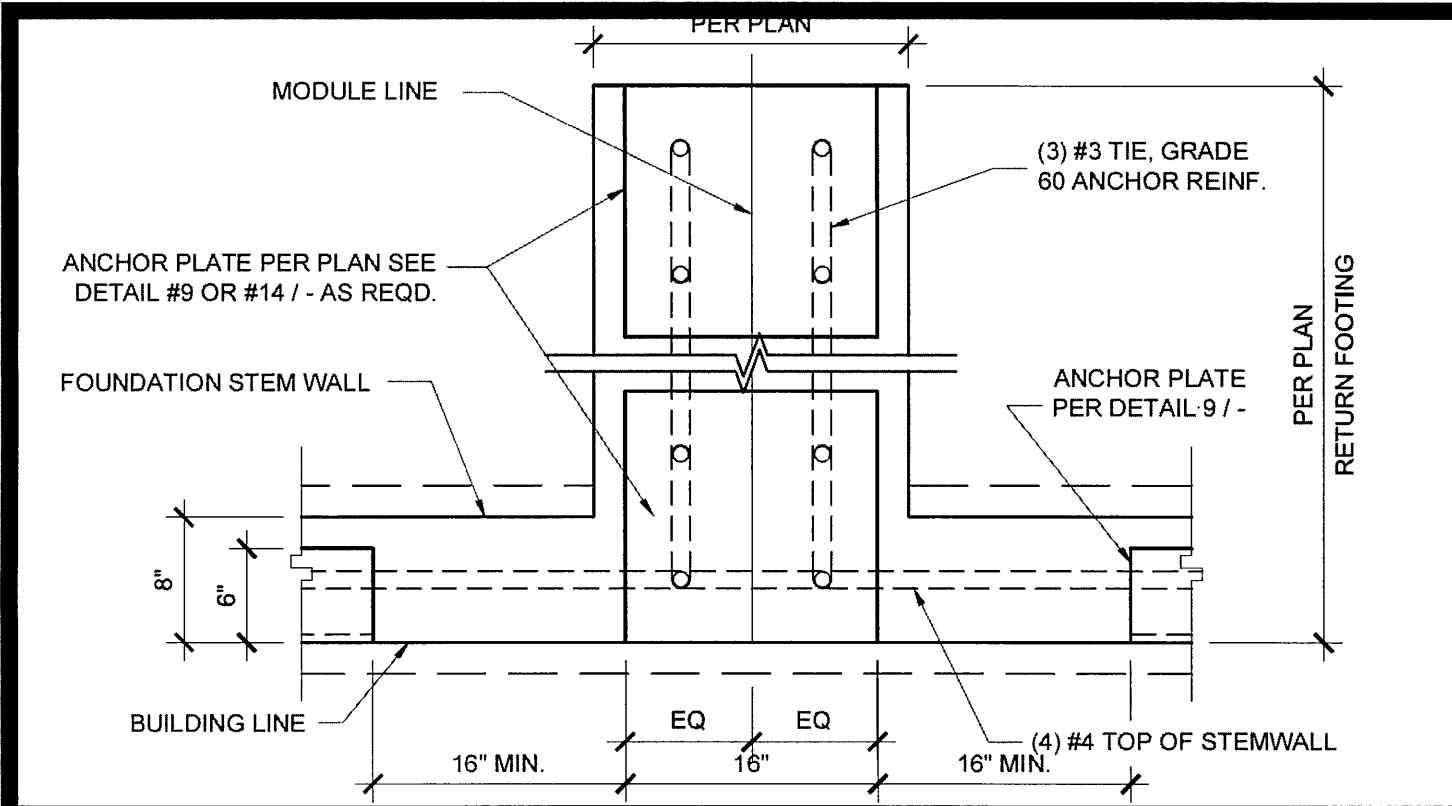
1

2

3

4

5

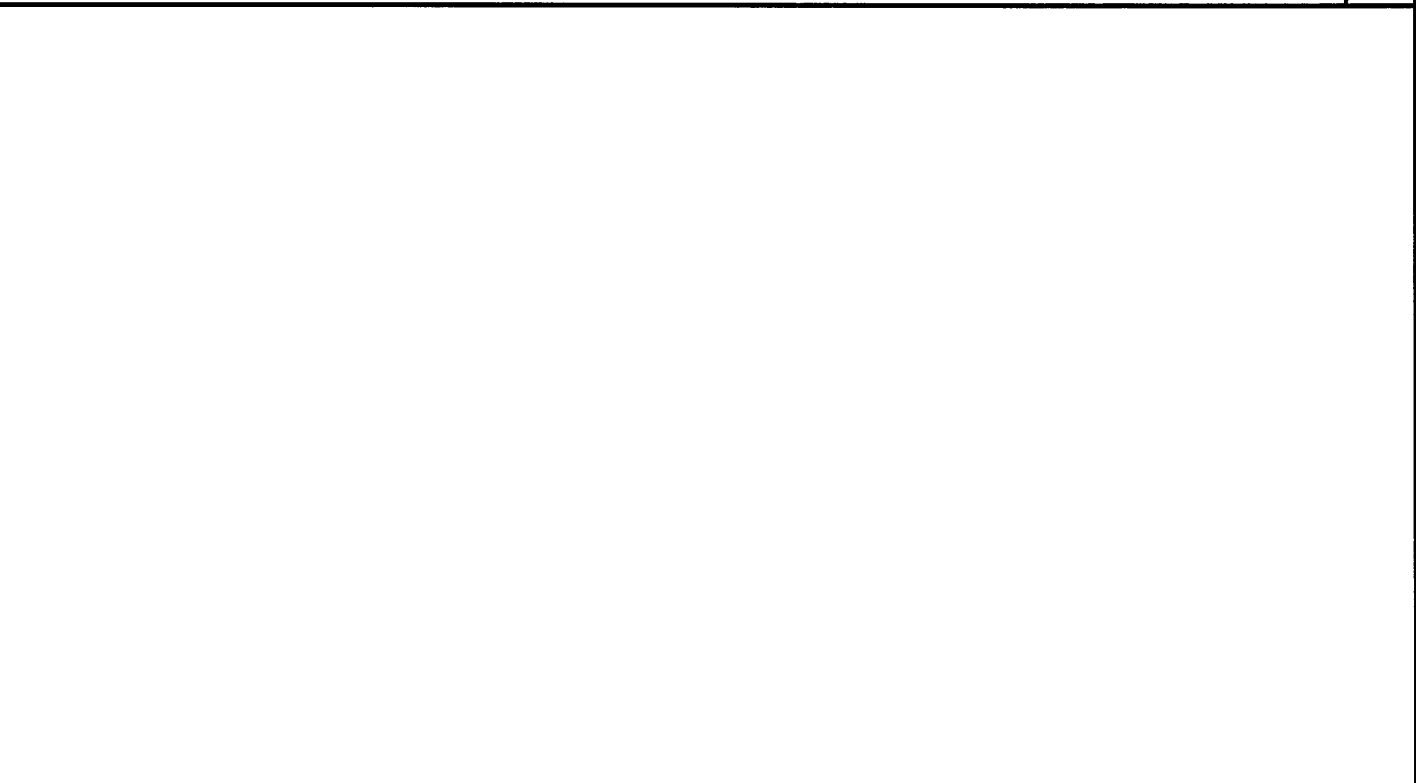
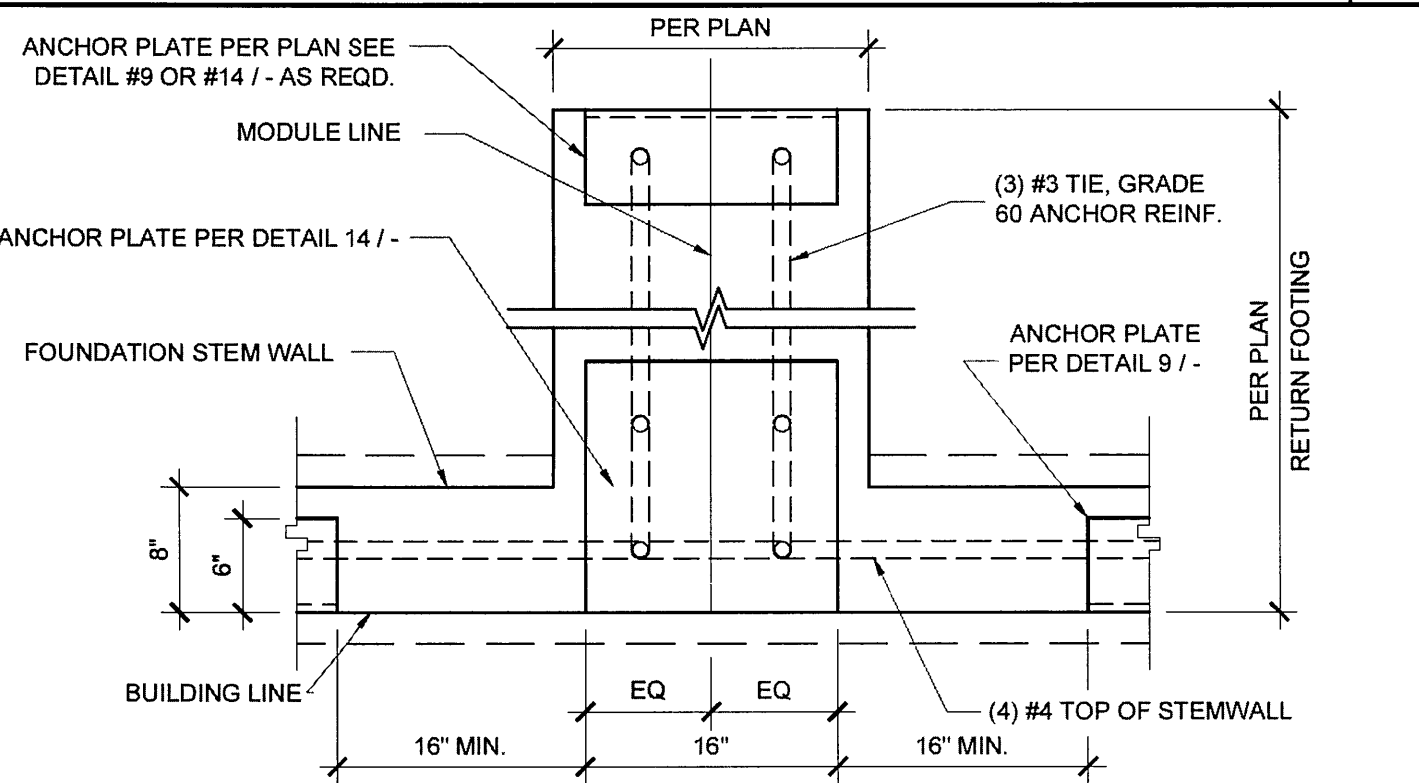
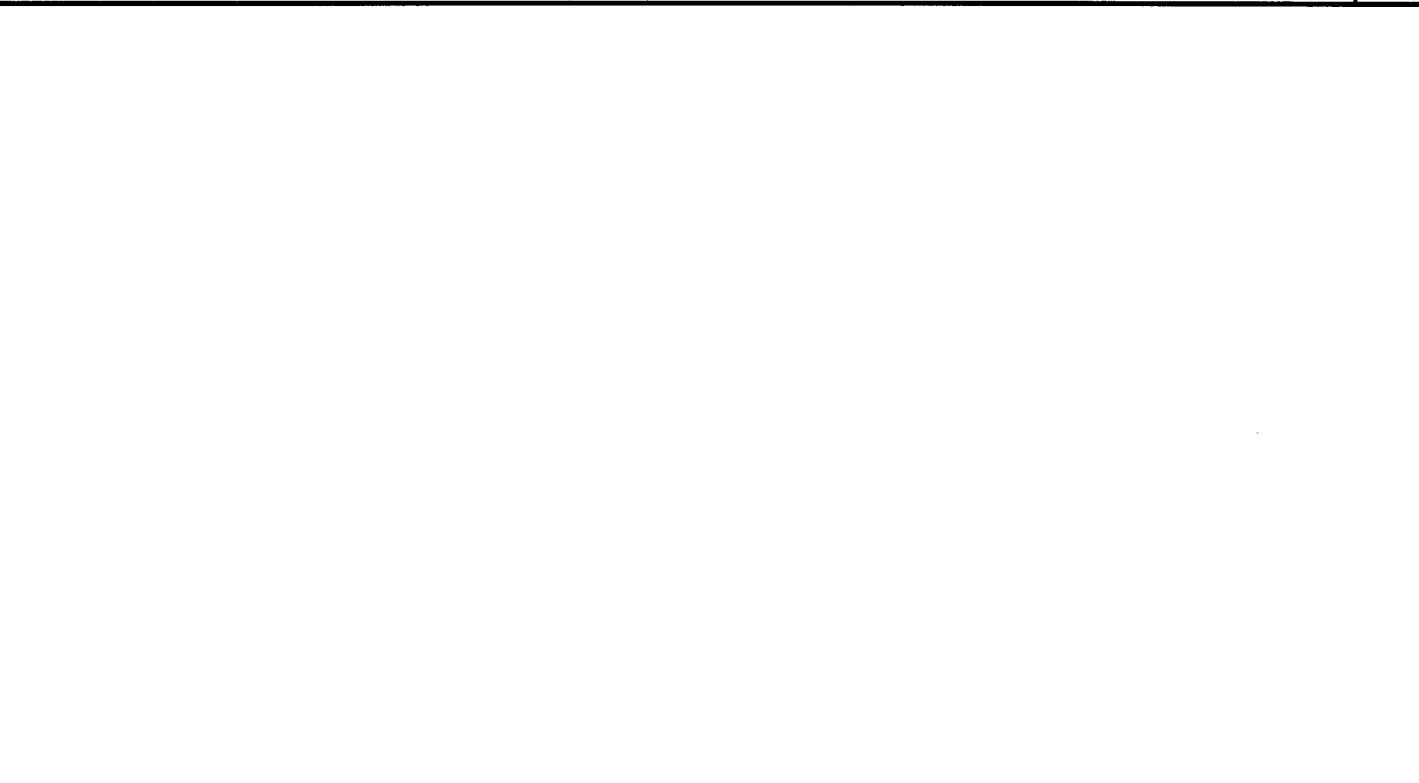
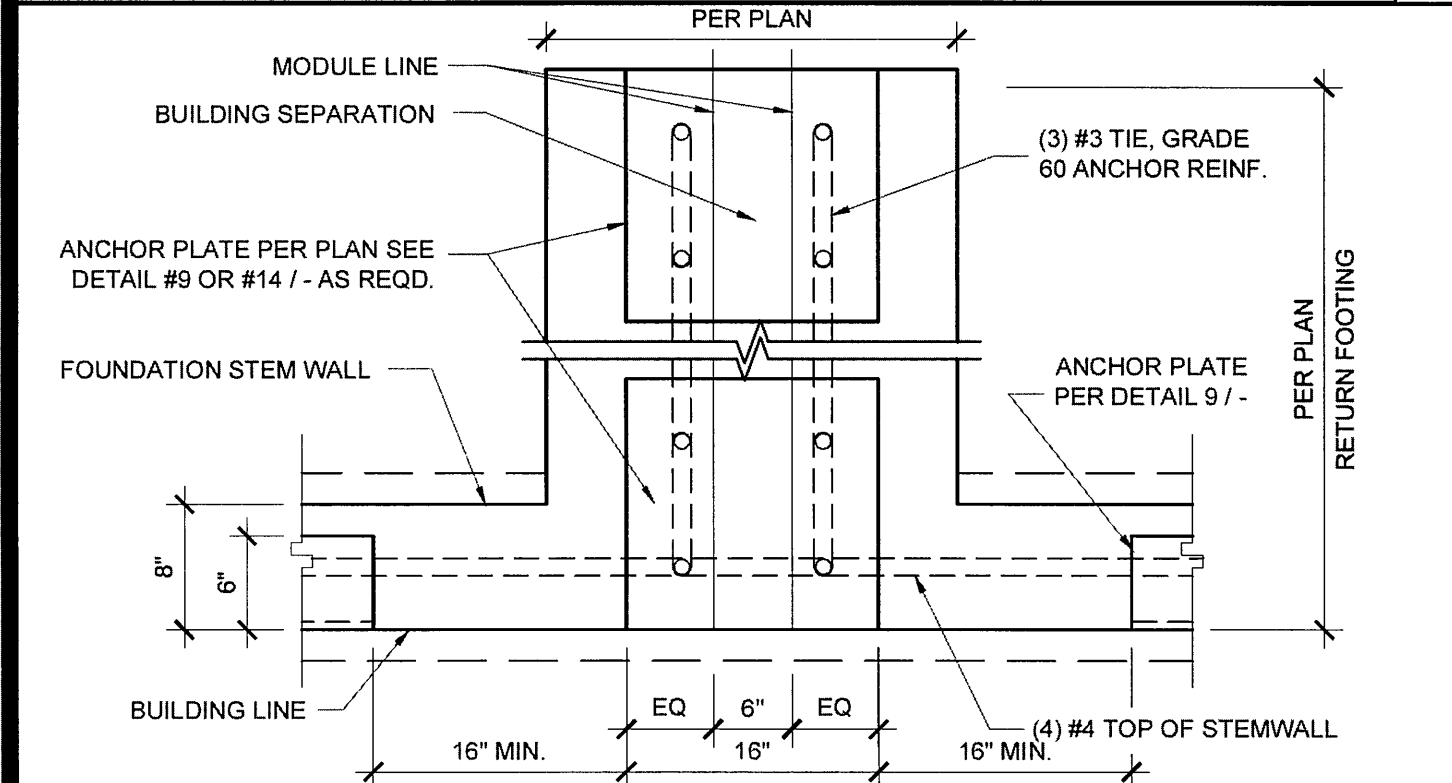


ANCHOR PLATE AT MODLINE, 150 PSF SCALE: 1" = 1'-0" 16

CRAWLSPACE VAPOR RETARDER SCALE: 1" = 1'-0" 11

ANCHOR PLATE AT CORNER SCALE: 1 1/2" = 1'-0" 6

NOT USED 1

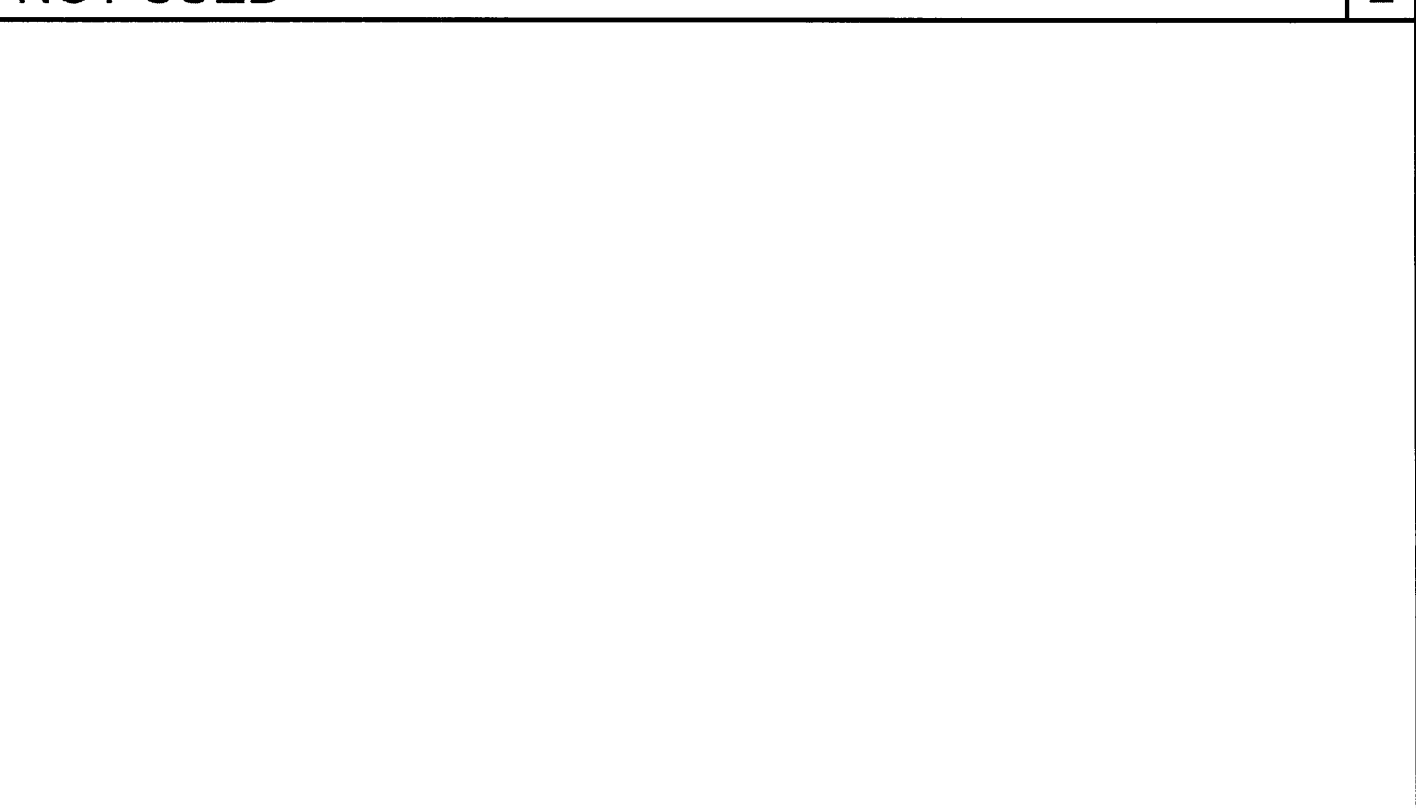
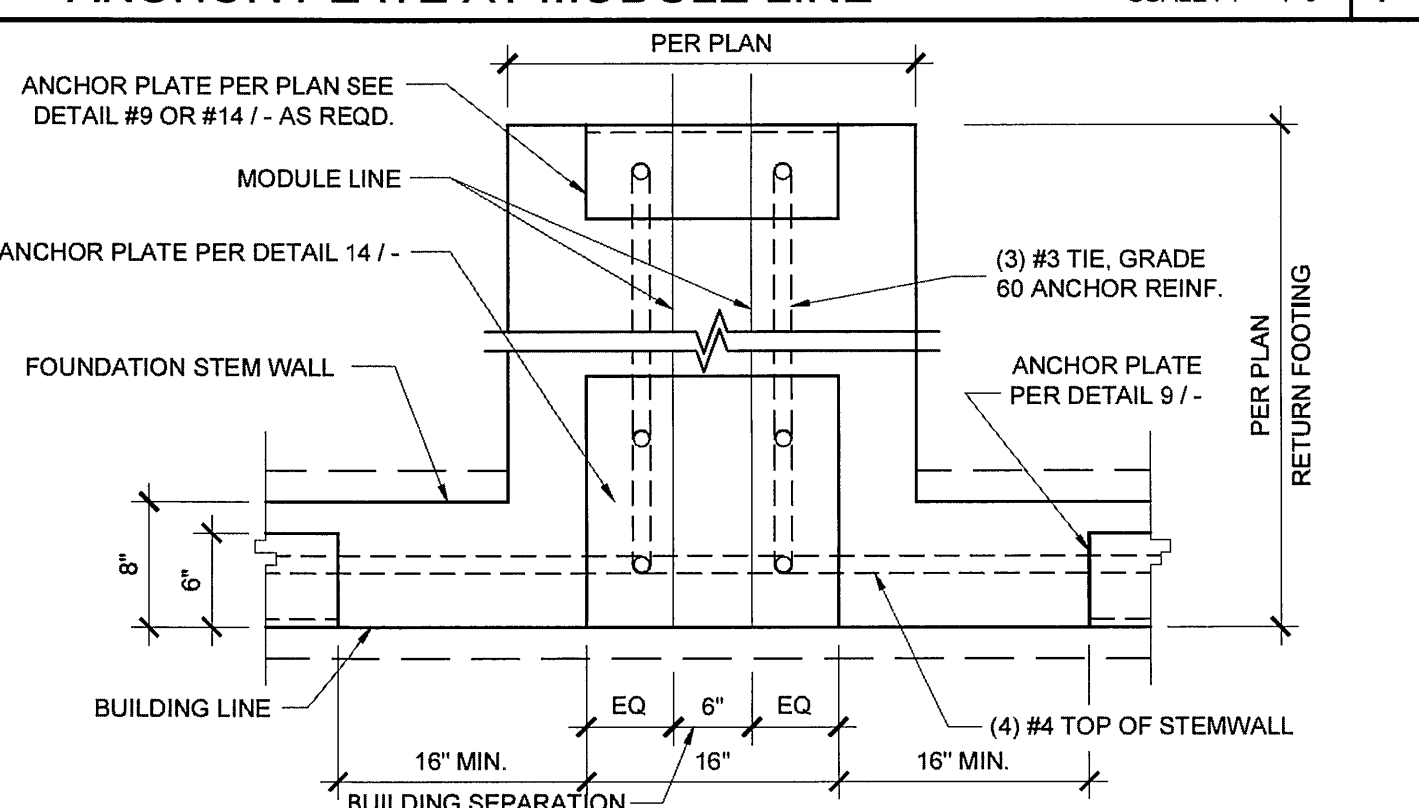
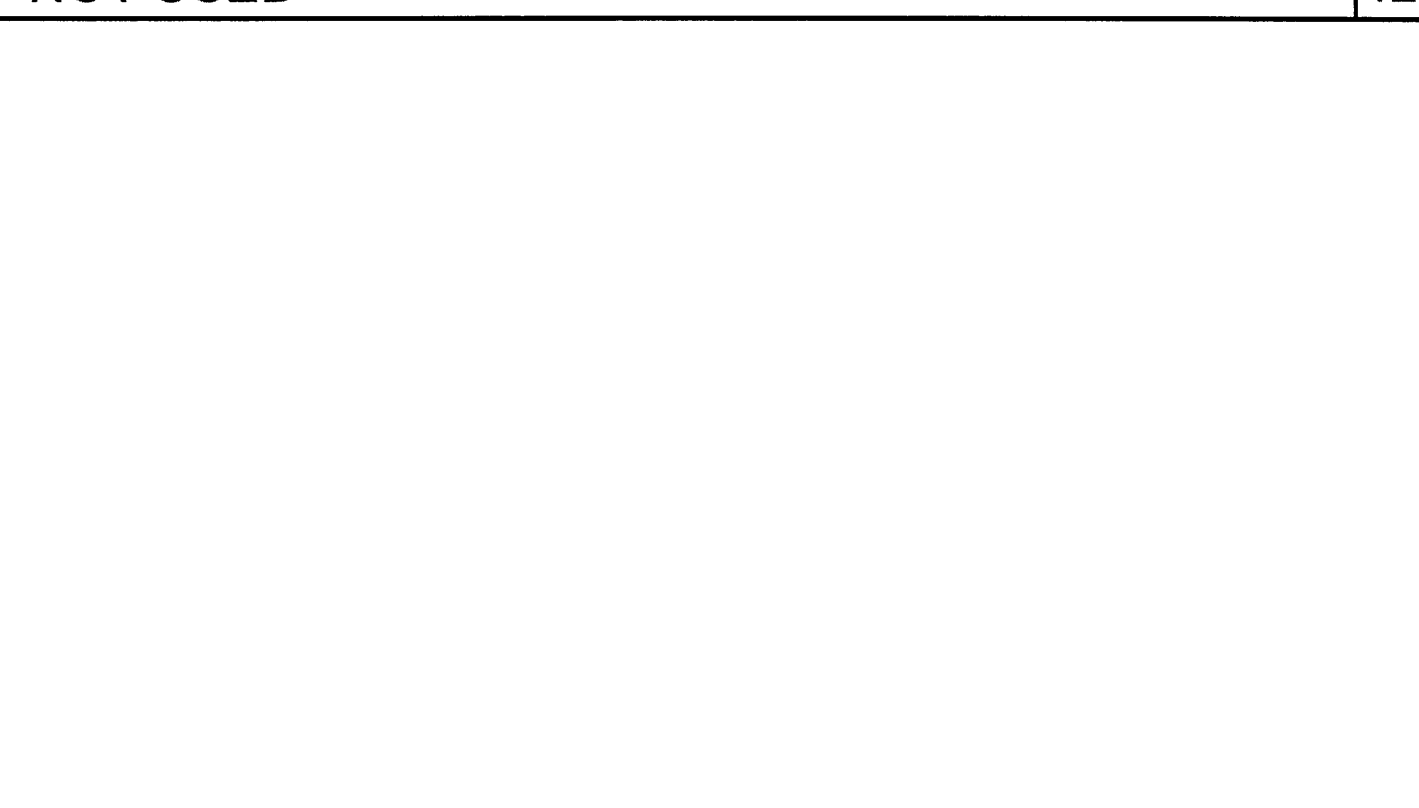
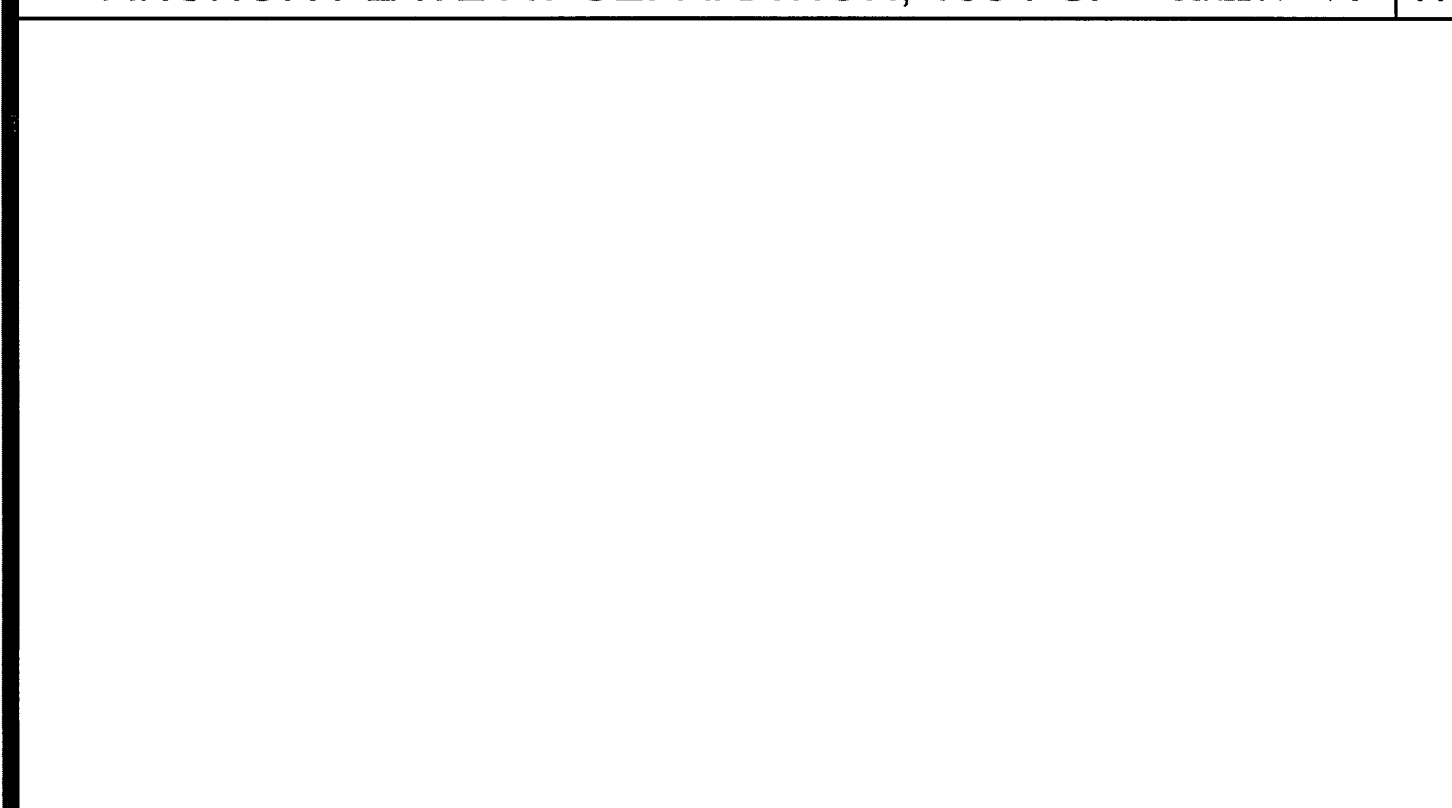


ANCHOR PLATE AT SEPARATION, 150 PSF SCALE: 1" = 1'-0" 17

NOT USED 12

ANCHOR PLATE AT MODULE LINE SCALE: 1" = 1'-0" 7

NOT USED 2

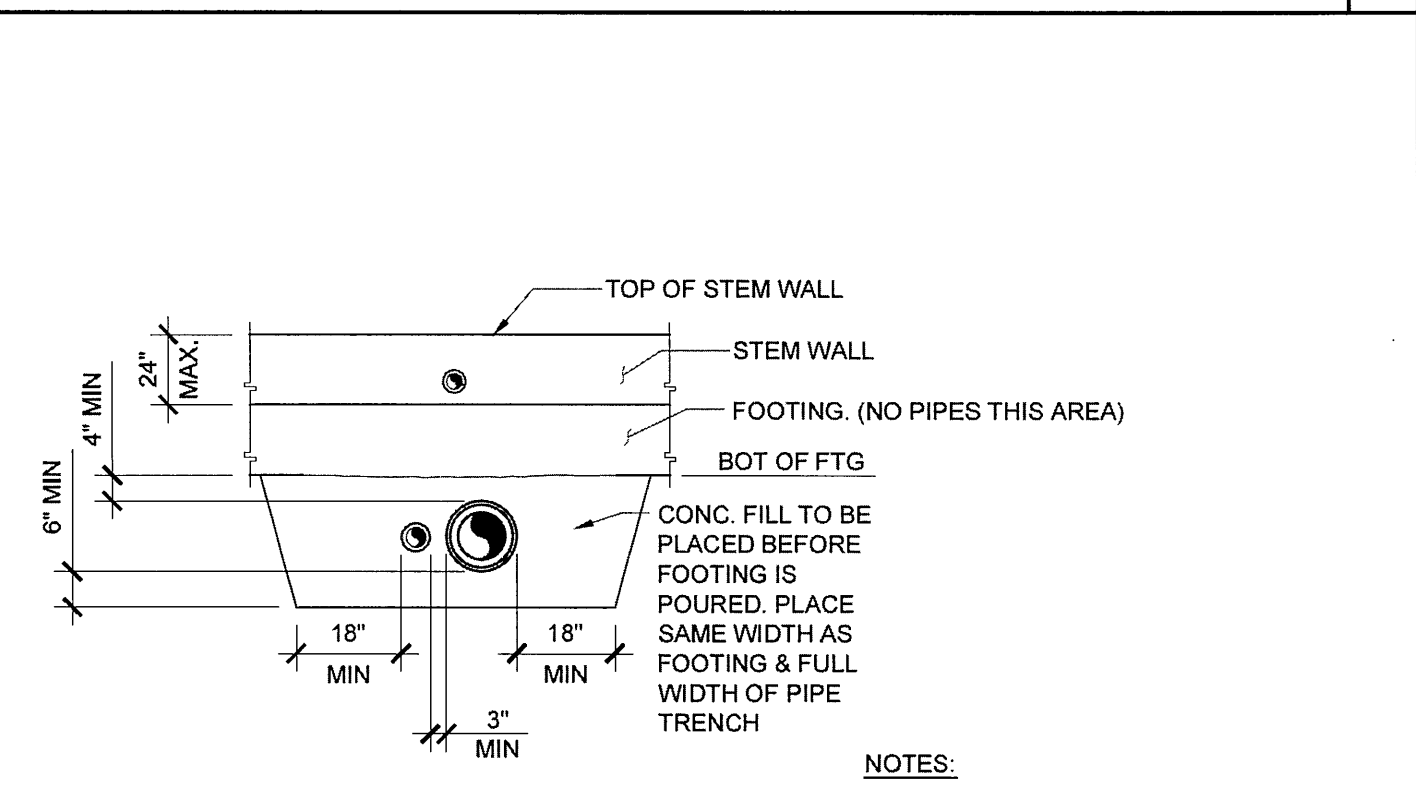
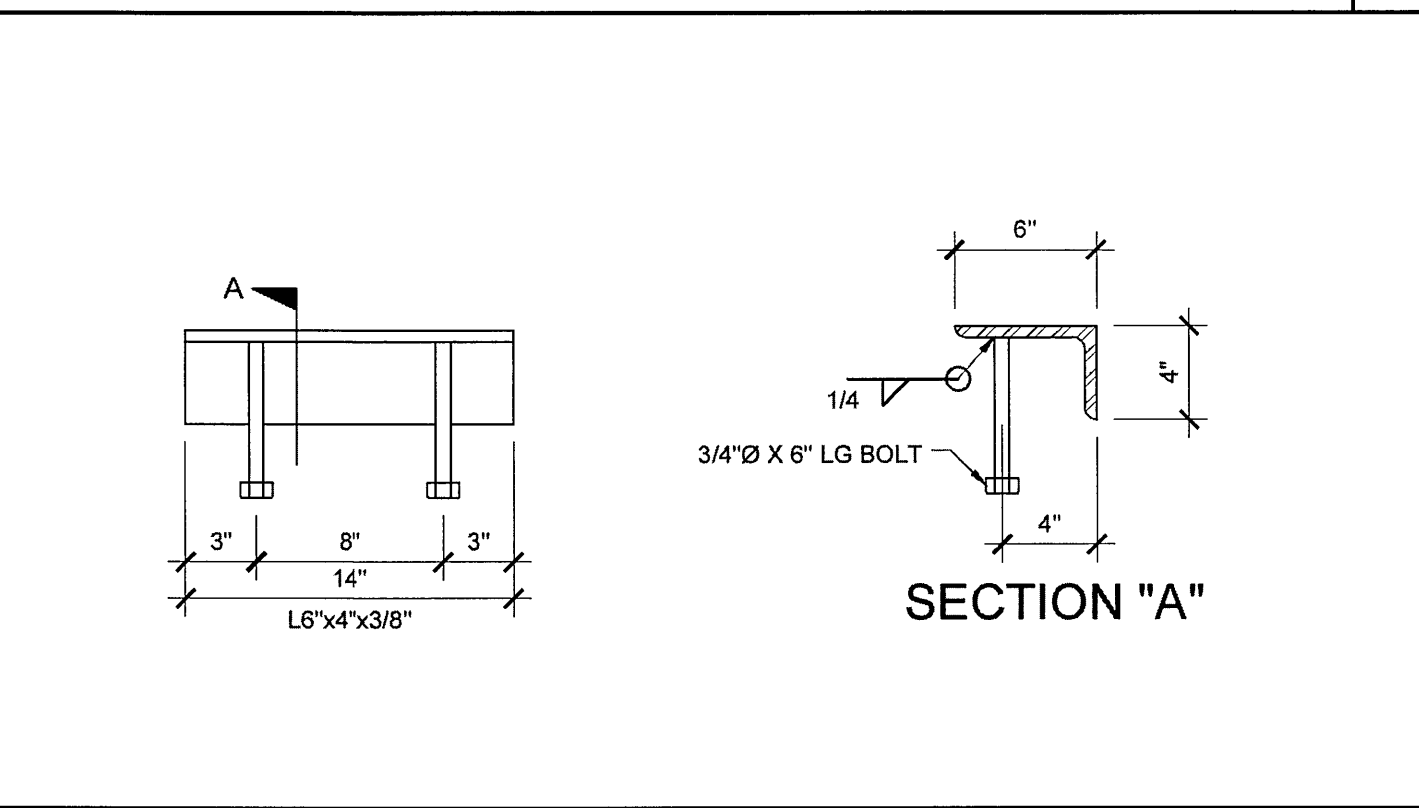
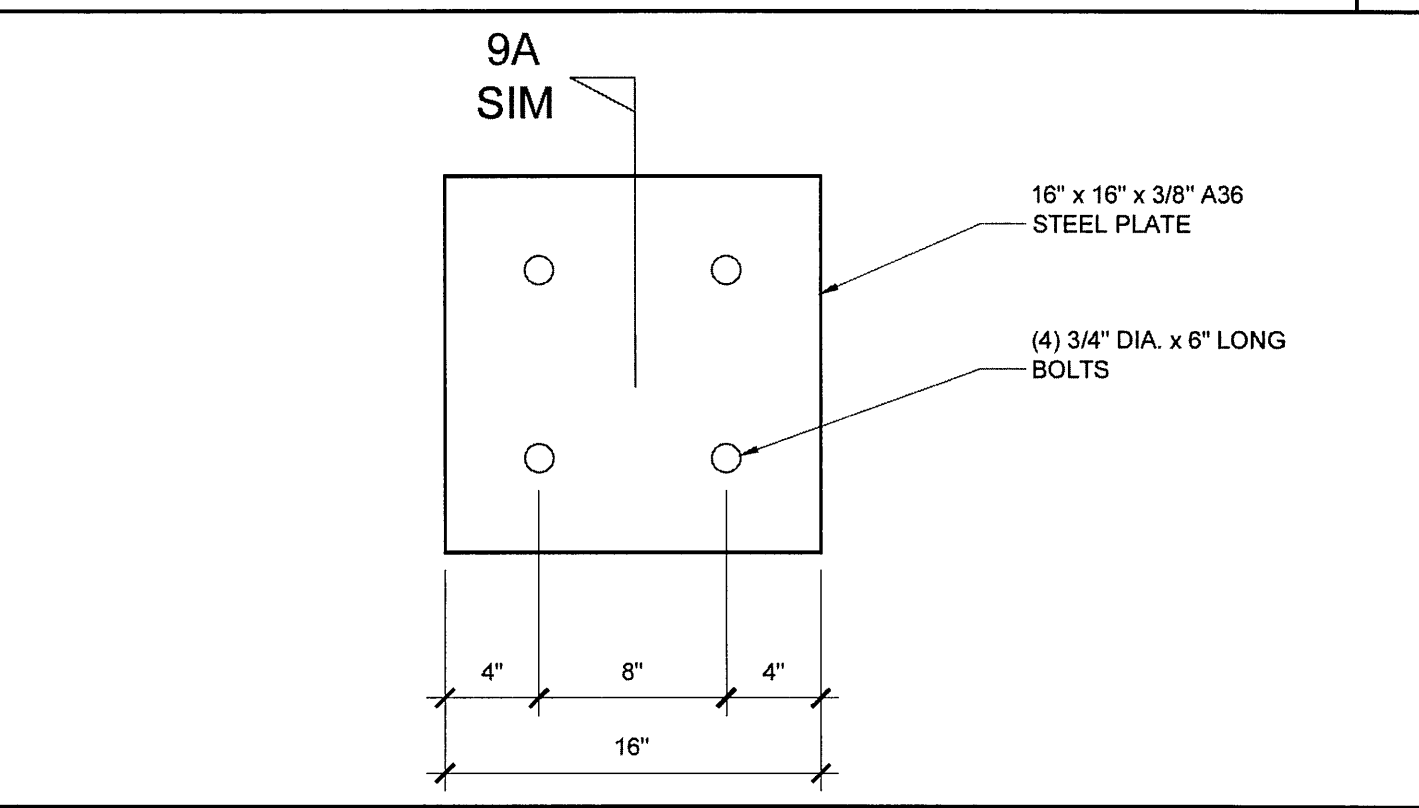
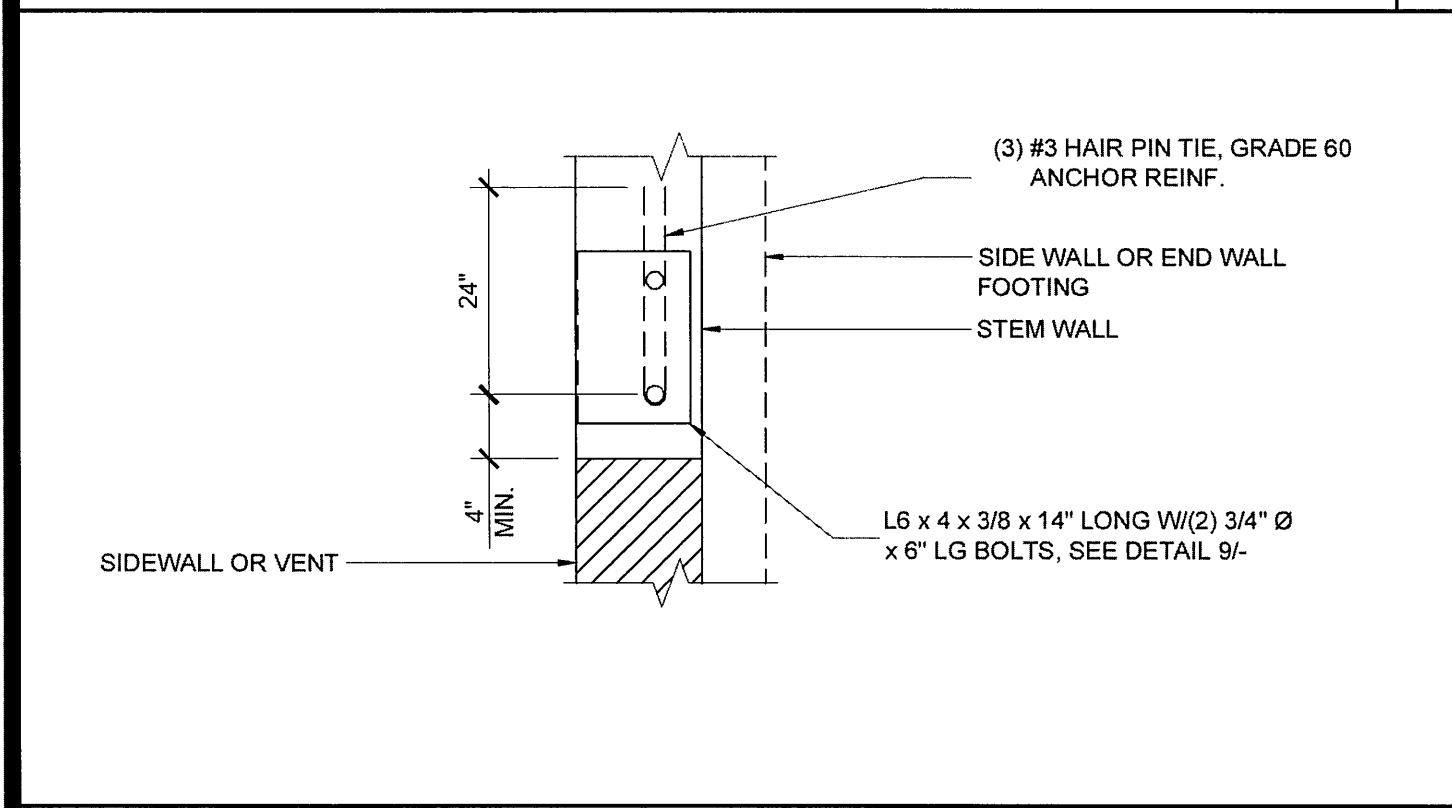


NOT USED 18

NOT USED 13

ANCHOR PLATE AT SEPARATION SCALE: 1" = 1'-0" 8

NOT USED 3

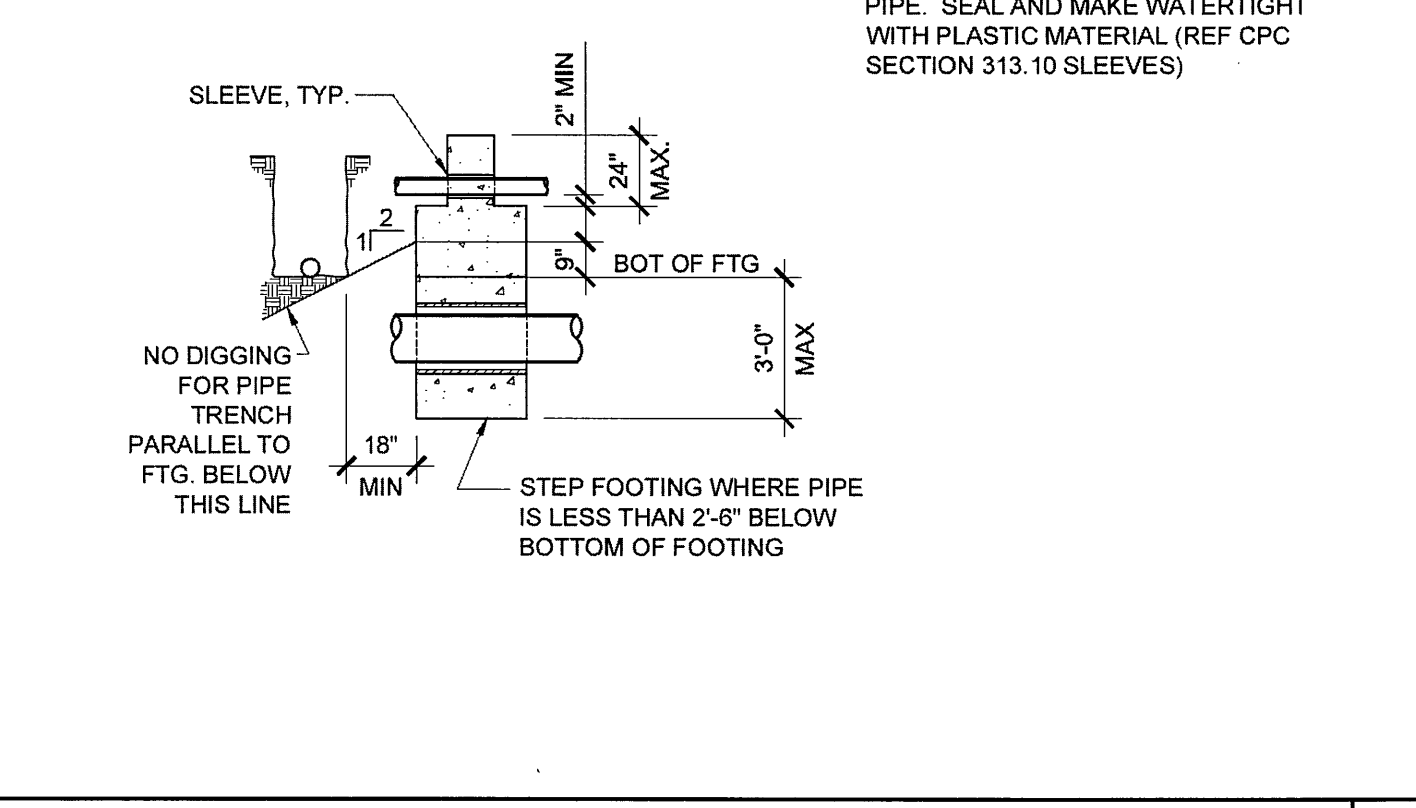
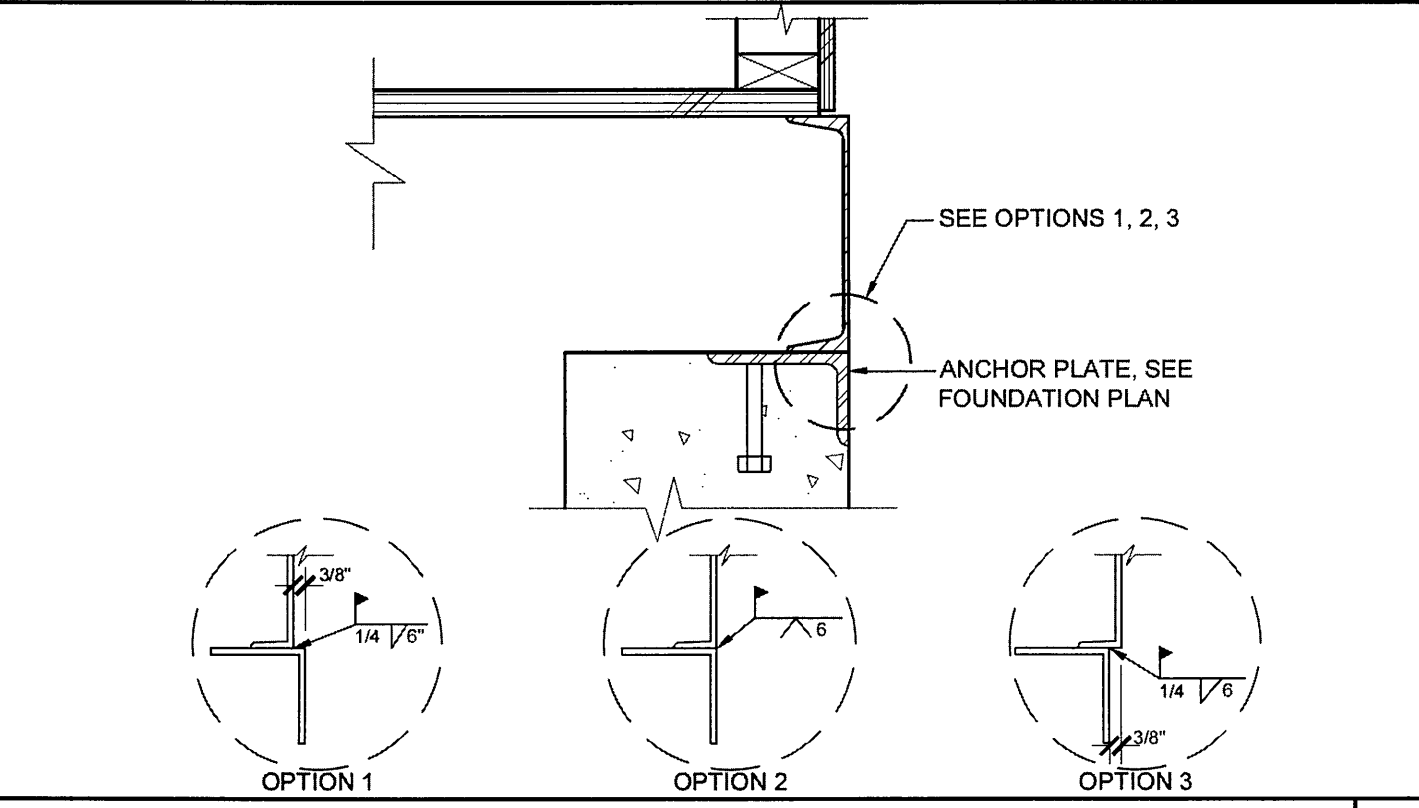
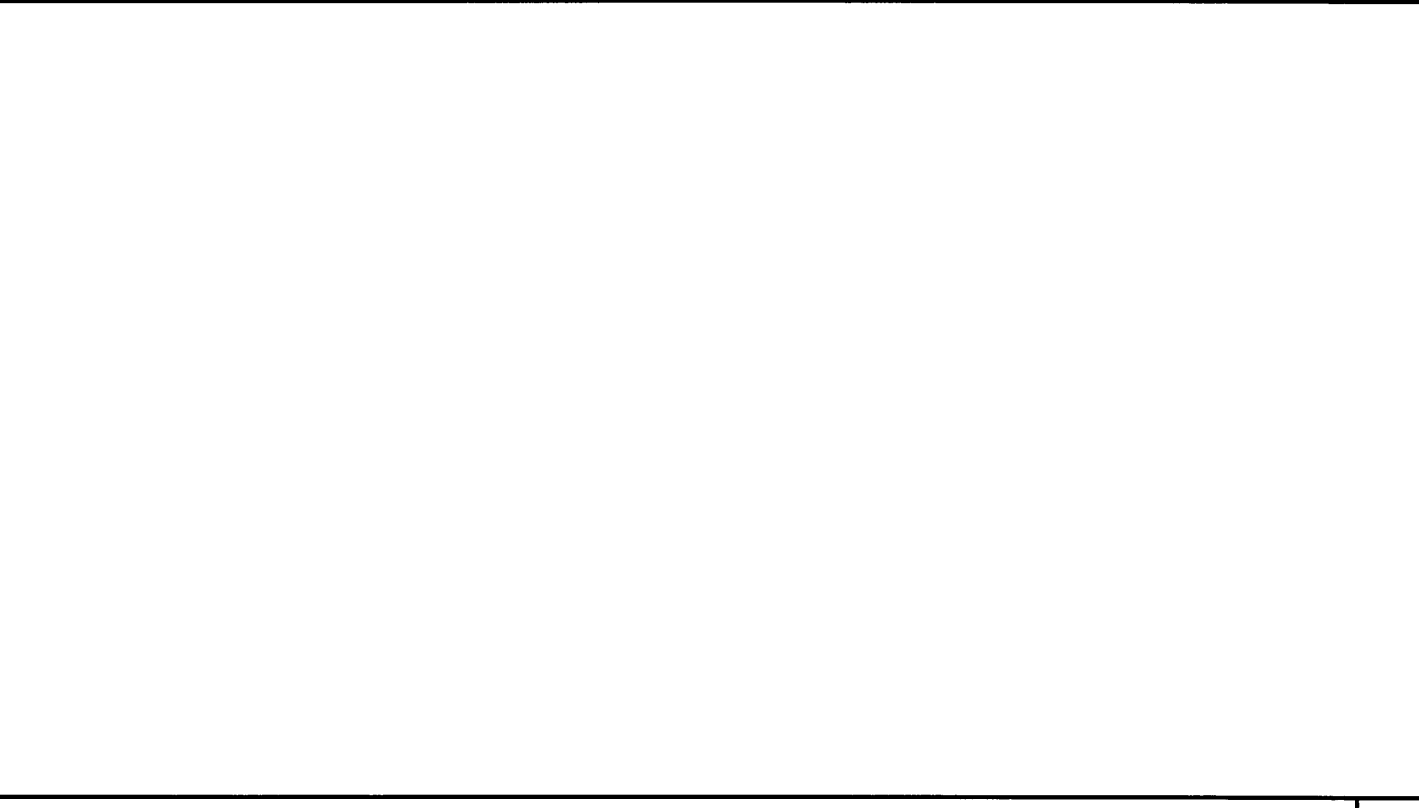
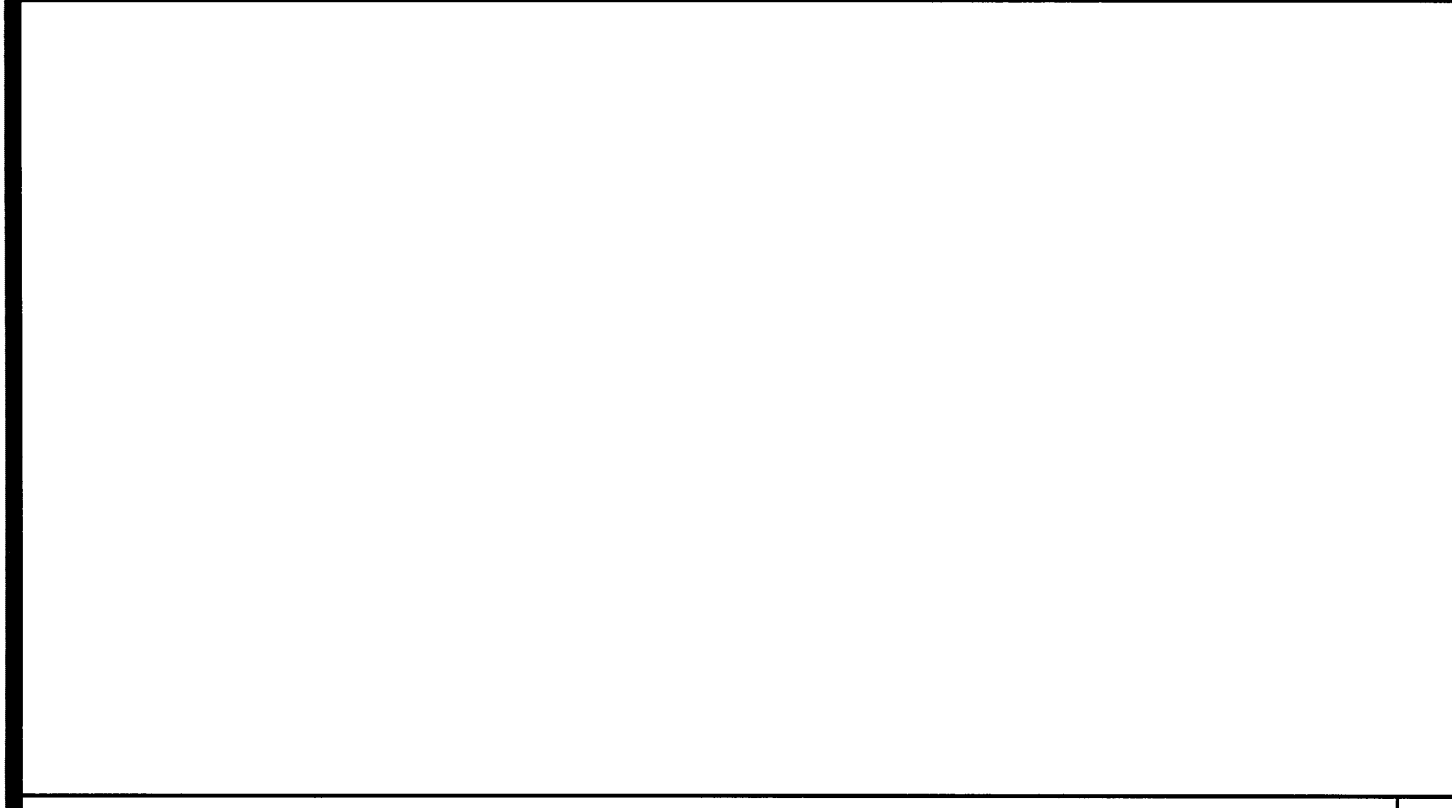


ANCHOR PLATE AT SIDEWALL OR ENDWALL @ VENT 19

LARGE EMBEDDED PLATE DETAIL SCALE: N.T.S. 14

WELD ANGLE DETAIL SCALE: 1 1/2" = 1'-0" 9

PIPE SLEEVE DETAIL SCALE: 1/4" = 1'-0" 5



NOT USED 20

NOT USED 15

FOUNDATION - WELDED SCALE: 1 1/2" = 1'-0" 10

PIPE SLEEVE DETAIL SCALE: 1/4" = 1'-0" 5

THESE DRAWINGS AND ALL MATERIAL CONTAINED HEREIN ARE THE PROPERTY OF SILVERCREEK INDUSTRIES, INC (SCI Inc) AND SHALL NOT BE REPRODUCED, COPIED OR OTHERWISE DISPOSED OF DIRECTLY OR INDIRECTLY AND SHALL NOT BE USED IN WHOLE OR IN PART TO ASSIST IN THE MAKING OF OR FOR THE PURPOSE OF FURNISHING ANY INFORMATION FOR THE MAKING OF DRAWINGS, PRINTS, APPARATUS OR PARTS THEREOF WITHOUT THE FULL KNOWLEDGE AND WRITTEN CONSENT OF SCI Inc. ALL PATENTABLE MATERIAL CONTAINED HEREIN AND ORIGINATING WITH SCI Inc SHALL BE THE PROPERTY OF SCI Inc

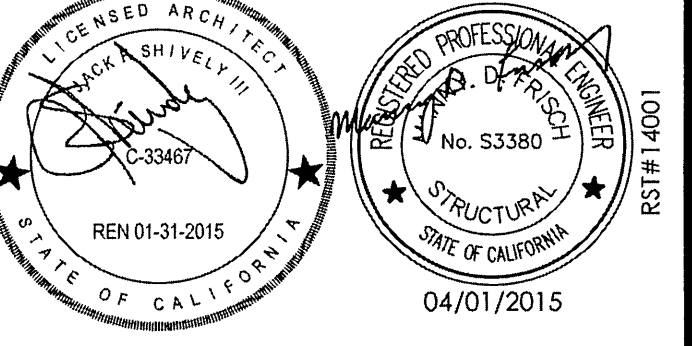
SILVER CREEK INDUSTRIES, INC.



2830 BARRETT AVE. PERRIS, CALIFORNIA 92571
PHONE: 951-943-5393 FAX: 951-943-2211

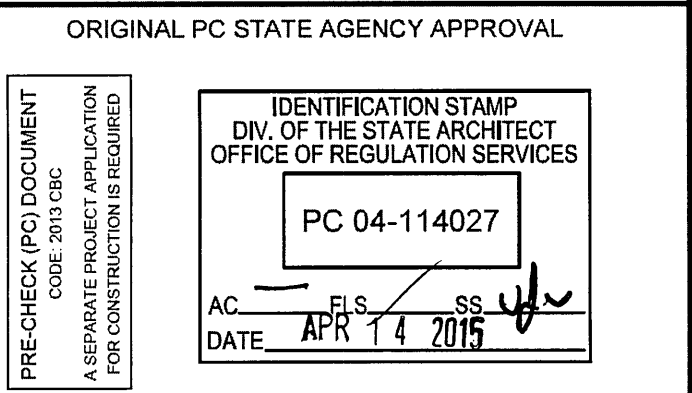
PROJECT NAME:
SHEET TITLE:

FOUNDATION DETAILS CONCRETE



ARCHITECT OF RECORD
SUBMISSION DATE

PROJECT SPECIFIC STATE AGENCY APPROVAL



REVISIONS

SILVER CREEK INDUSTRIES
24' x 40' PC (HIGH SEISMIC)
PROJECT NO:
DRAWN BY:
SCALE: AS NOTED
DATE: 09-10-14

P.C. SHEET NUMBER
F-2.51
-- HIGH SEISMIC --