

ERROR MESSAGES IN PS 8

1. Class dates must be changed in both the *Basic Data* page and *Meetings* page before you save the pages.



2. Room, day, and/or time changes made to the meeting pattern conflict with another class.

Go to: [Home](#) > [Manage Student Records](#) > [Establish Courses](#) > [Use](#) > **Course Event Table**

to find the class conflict.



3. Information was entered incorrectly.



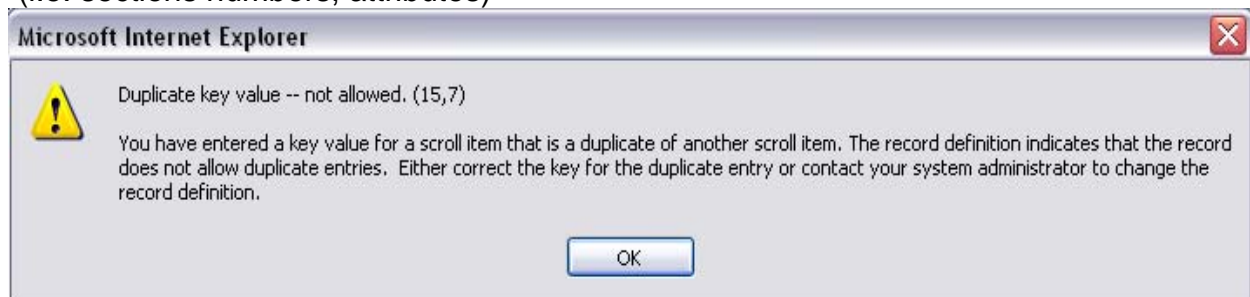
4. Classes cannot have notes in both the canned notes and free format notes fields for the same Sequence Number.

*Sequence Number:

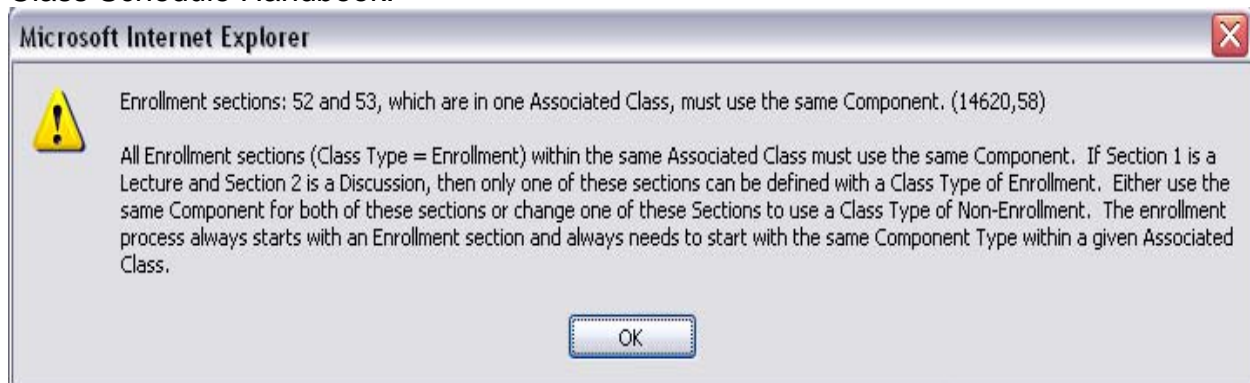
1



5. Class information is the same as another class under the same subject.
(i.e. sections numbers, attributes)

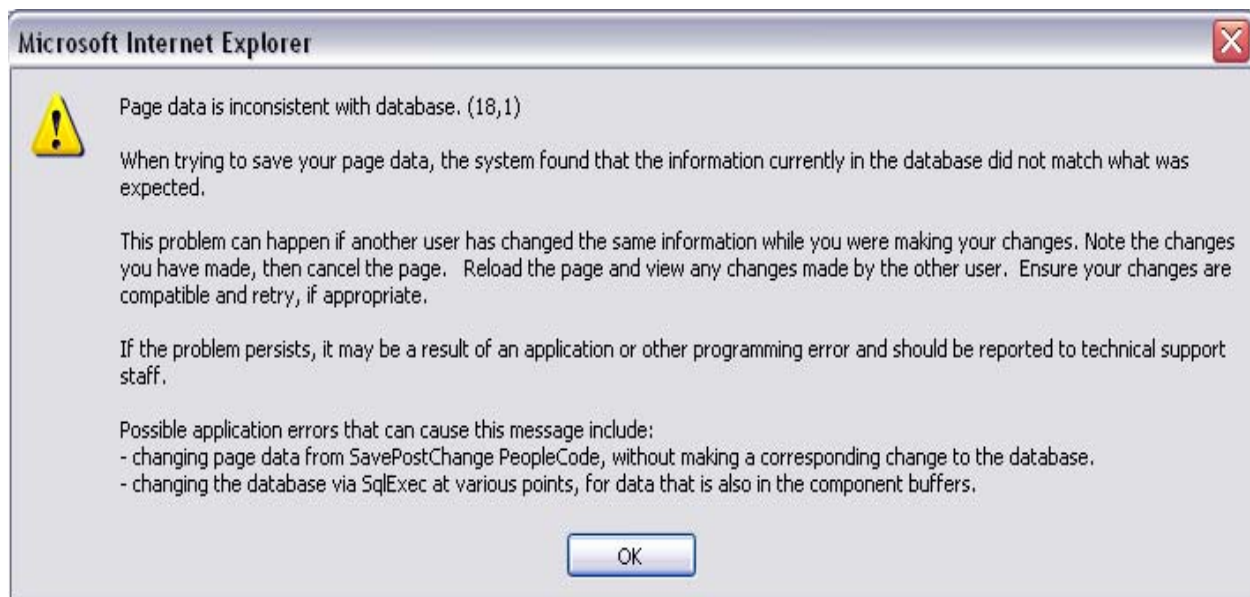


6. Auto-enroll classes must have the same associated number. The LEC must be *enroll* and the LAB or L/L section must be *non-enroll*. For more information, refer to pages 15-16 of the Class Schedule Handbook.

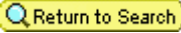


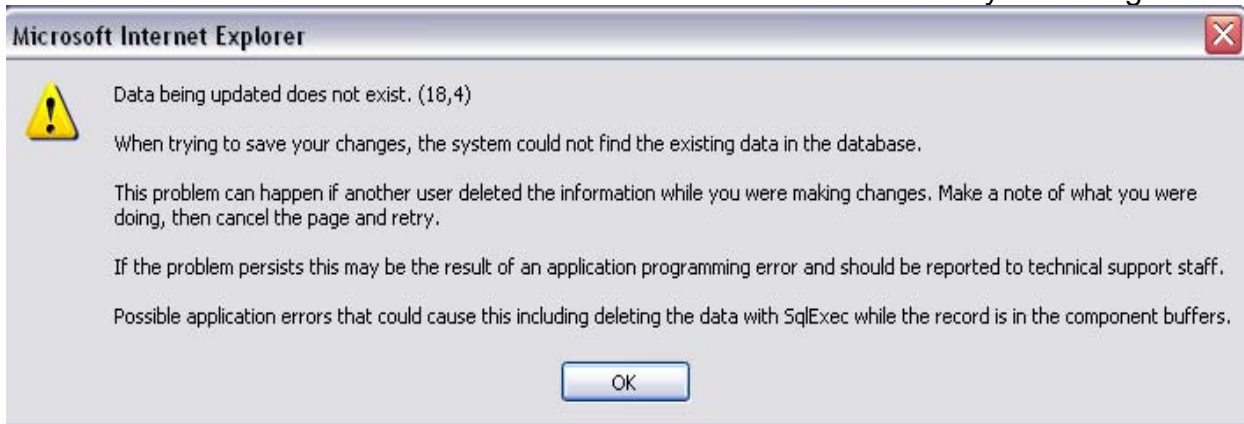
7. a) Not all class information was updated before saving
b) Too many class changes were made and weren't saved after each one
c) Making changes to the *Detail Panel* and then going back to the *Meetings Page* and making changes there.

Note: when receiving this error message, you will need to get out of the page you were in – click on [Return to Search](#). You will then have to start over with your changes.

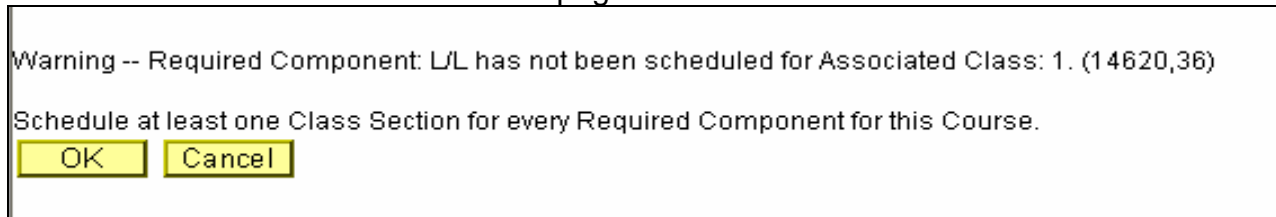


8.
 - a) Not all class information was updated before saving
 - b) Too many class changes were made and weren't saved after each one
 - c) Making changes to the *Detail Panel* and then going back to the *Meetings Page* and making changes there.

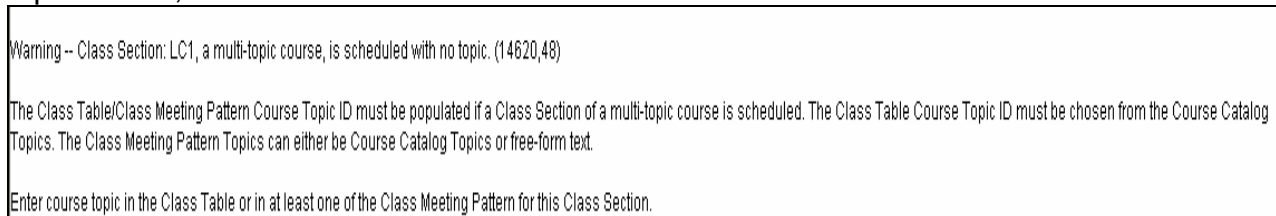
Note: when receiving this error message, you will need to get out of the page you were in – click on  You will then have to start over with your changes.



9. *Class Associations page*: need to add or remove a component for a multi-component course. For further information refer to pages 18-19 of the *Class Schedule Handbook*.



10. Topic classes must have Topic ID assigned to the class in the *Basic Data* page. If the class topic is new, contact *Instructional Staff* for assistance.



11. When a second meeting pattern is added to the class, the instructor(s) assigned to the class must be removed from it. Classes cannot have 2 primary instructors.

