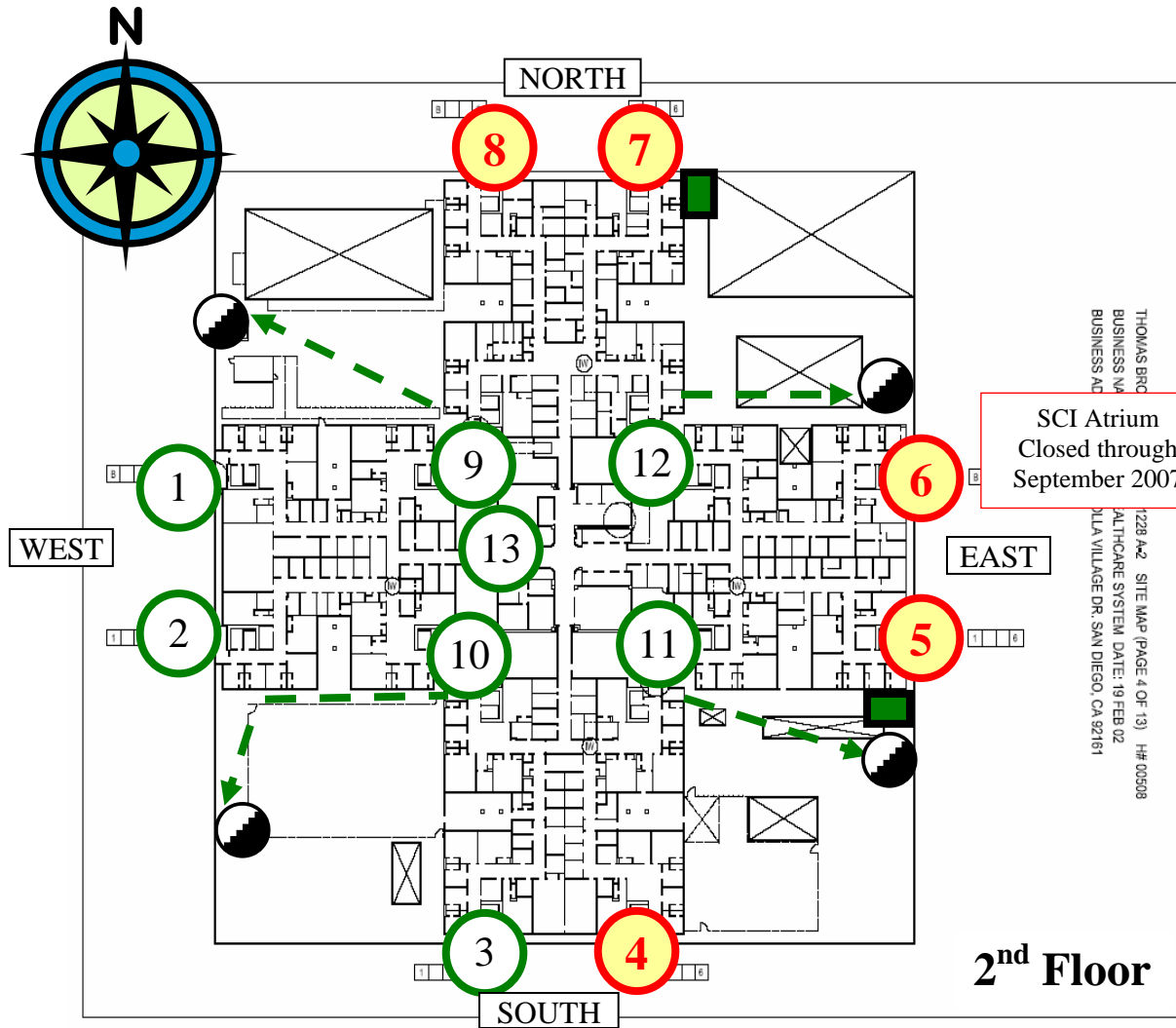







**STAIRWELL MAP**  
6/14/2007



-  CLOSED STAIRWELL
-  OPEN STAIRWELL
-  OPEN ROUTE ON 2<sup>ND</sup> FLOOR DECK
-  TEMPORARY STAIRWELL
-  2<sup>ND</sup> FLOOR DECK STAIRWELL

**NOTES:**

- Stairwells 1, 2, & 3 are recommended for patient evacuation, especially non-ambulatory patients since these stairwells terminate on the first floor and are building exits.
- Stairwells 9, 10, 11 & 12 (and temporary stairwells 5 & 7) provide access to floors 2-6 and require transferring to another stairwell on the 2<sup>nd</sup> floor in order to exit the building.
- Stairwell 13 provides access between the basement and the 2<sup>nd</sup> floor. As a reference, the first floor entry point to stairwell 13 is across from the Audiology Clinic (1 west).

THOMAS BROS  
BUSINESS MAP  
BUSINESS AD  
1228 A-2 SITE MAP (PAGE 4 OF 13) HF 00508  
ALTCARE SYSTEM DATE: 19 FEB 02  
1114 VILLAGE DR, SAN DIEGO, CA 92161

SCI Atrium  
Closed through  
September 2007

**2<sup>nd</sup> Floor**