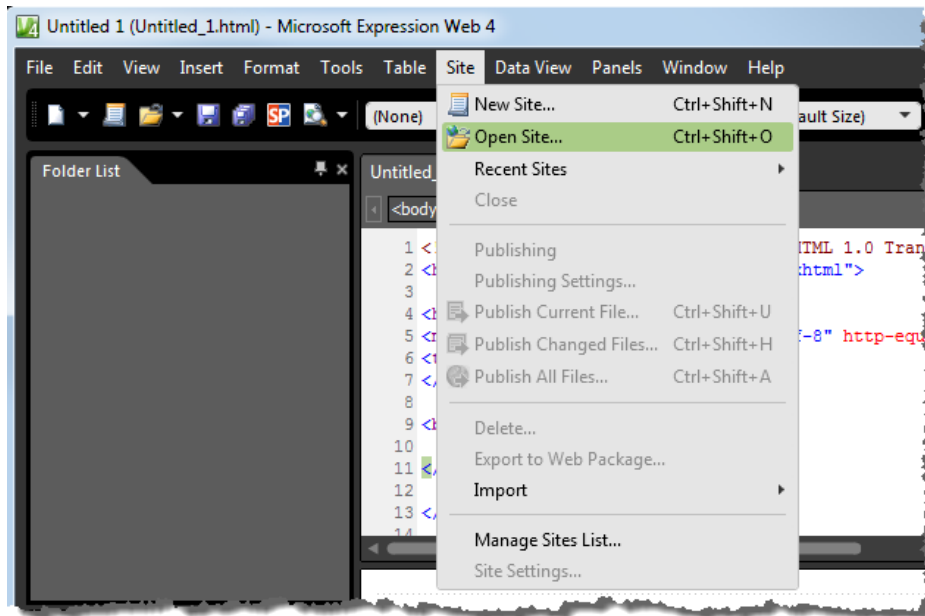
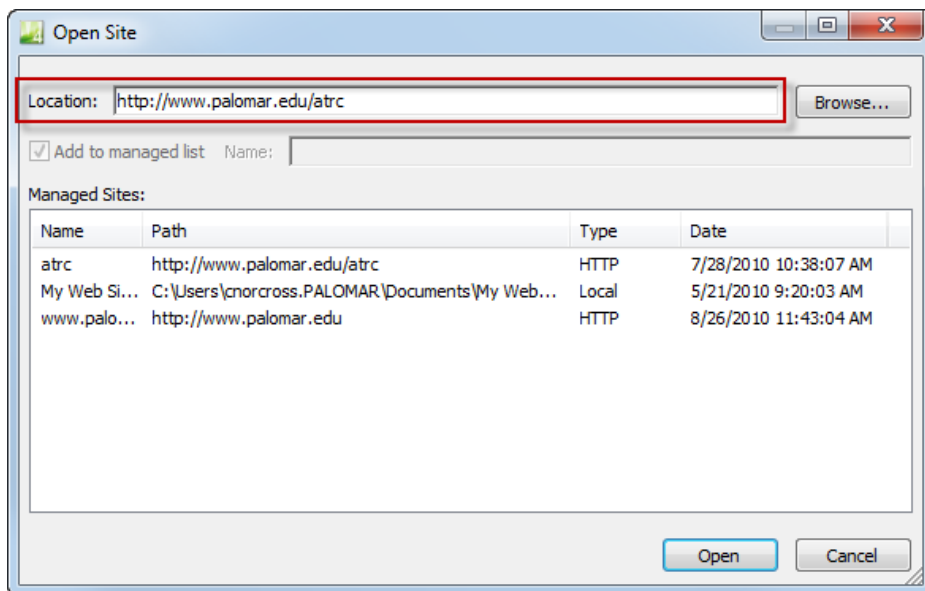


Opening a Website with Microsoft Expression Web 4

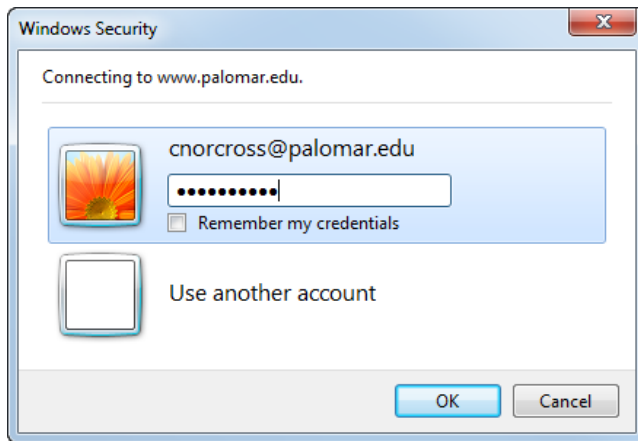
1. Open Microsoft Expression Web 4.
2. Choose Open Site from the Site menu.



3. Type your website URL in the Location field.



4. Click Open.
5. Type your Username and Password.



6. Click OK.

Frequently Asked Questions

What is my URL?

Your URL is the same as the address of your website. For example, <http://www.palomar.edu/atrc/> or <http://faculty.palomar.edu/jdoe/>. If your site is on the new Palomar College web server and begins with <http://www2.palomar.edu/>, you must replace "http" with "https" when editing your site in Microsoft Expression Web.

What is my username?

For faculty and staff, your username is your Palomar College email address (e.g. jsmith@palomar.edu). Students must use "student\" followed by their 9-digit student id number, e.g. [student\012345678](#).

What is my password?

For faculty and staff, your password is the same one you use for your Palomar email/network account. Students must use the same password they use for eServices.

How do I request a new website if I do not already have one?

Contact Chris Norcross at cnorcross@palomar.edu to request a new website.

How do I obtain permission to edit an existing website?

Before you are able to edit a website you must be given the appropriate permissions on the server. To request author access email Chris Norcross at cnorcross@palomar.edu.